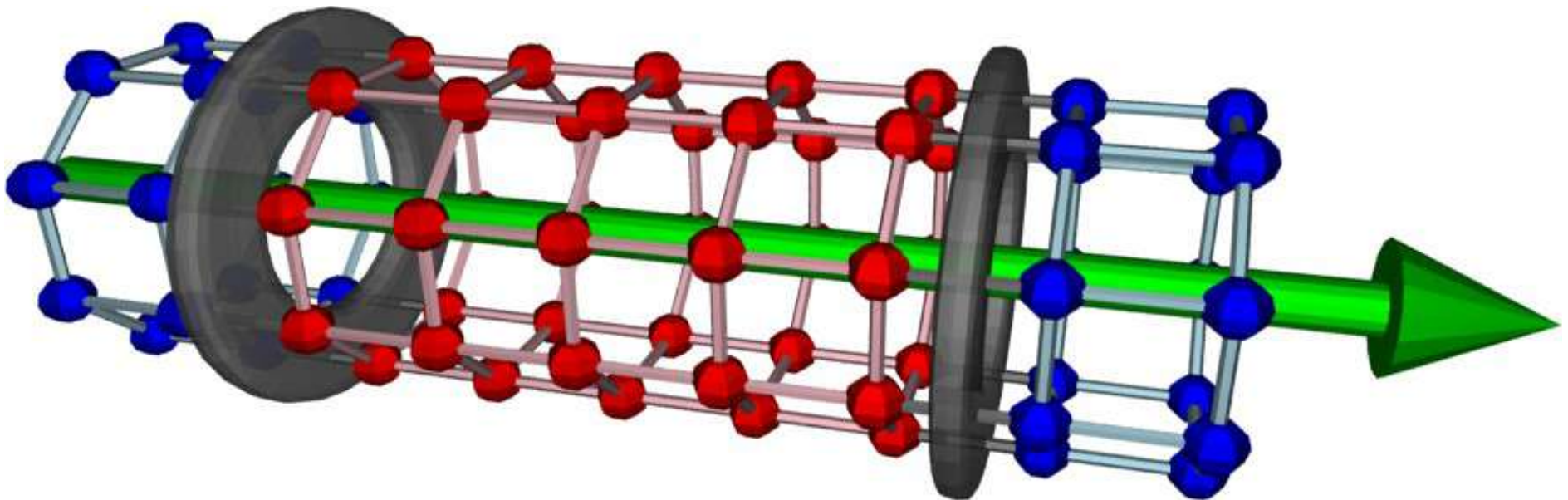


An *ab initio* study of the Little-Parks effect

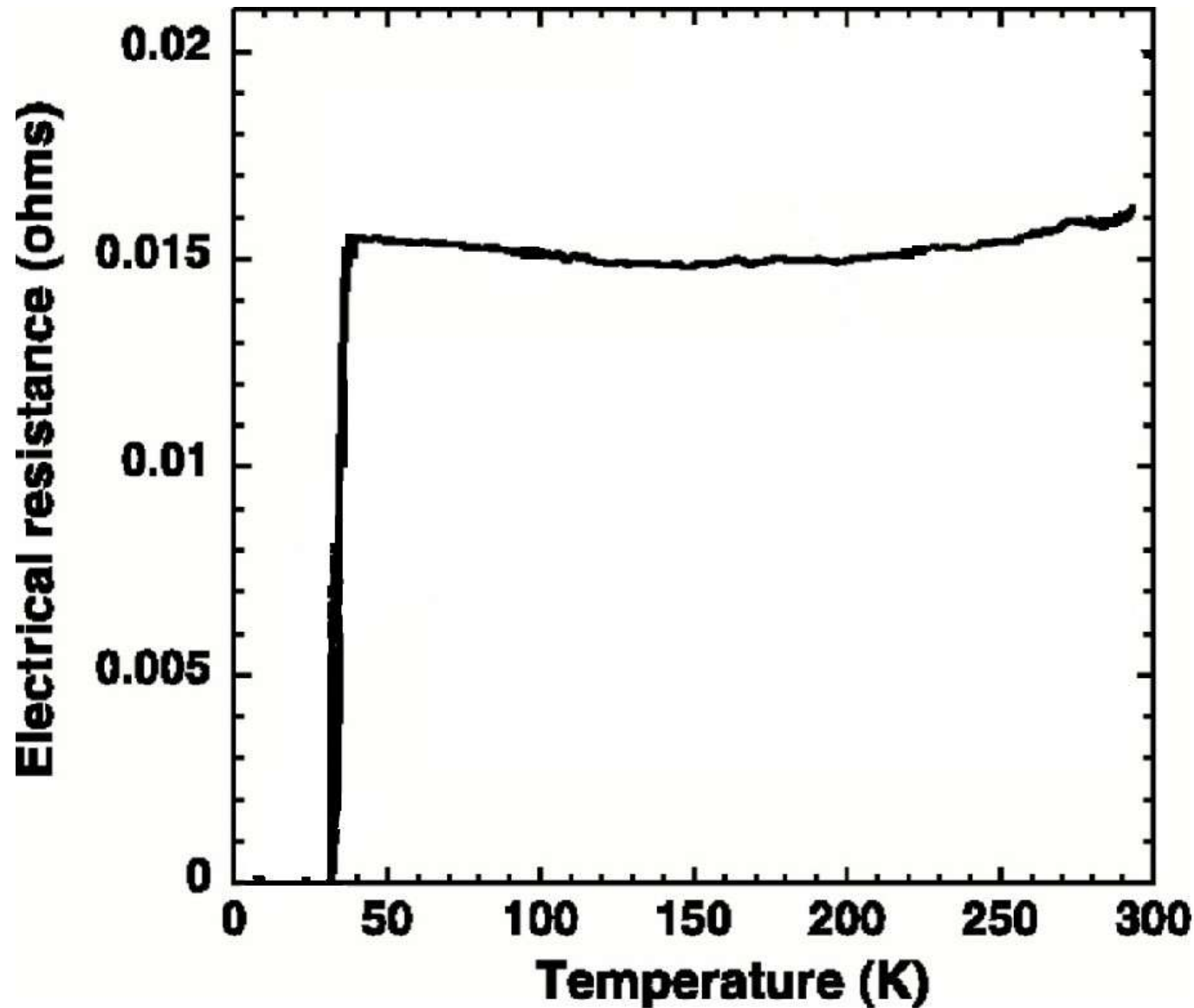


Gareth Conduit, Yigal Meir

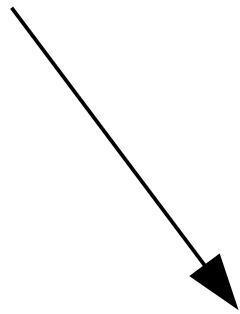
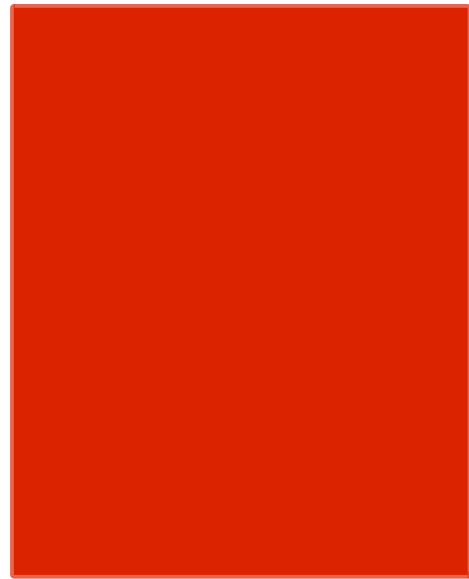
Ben Gurion University

arXiv:1102.1604

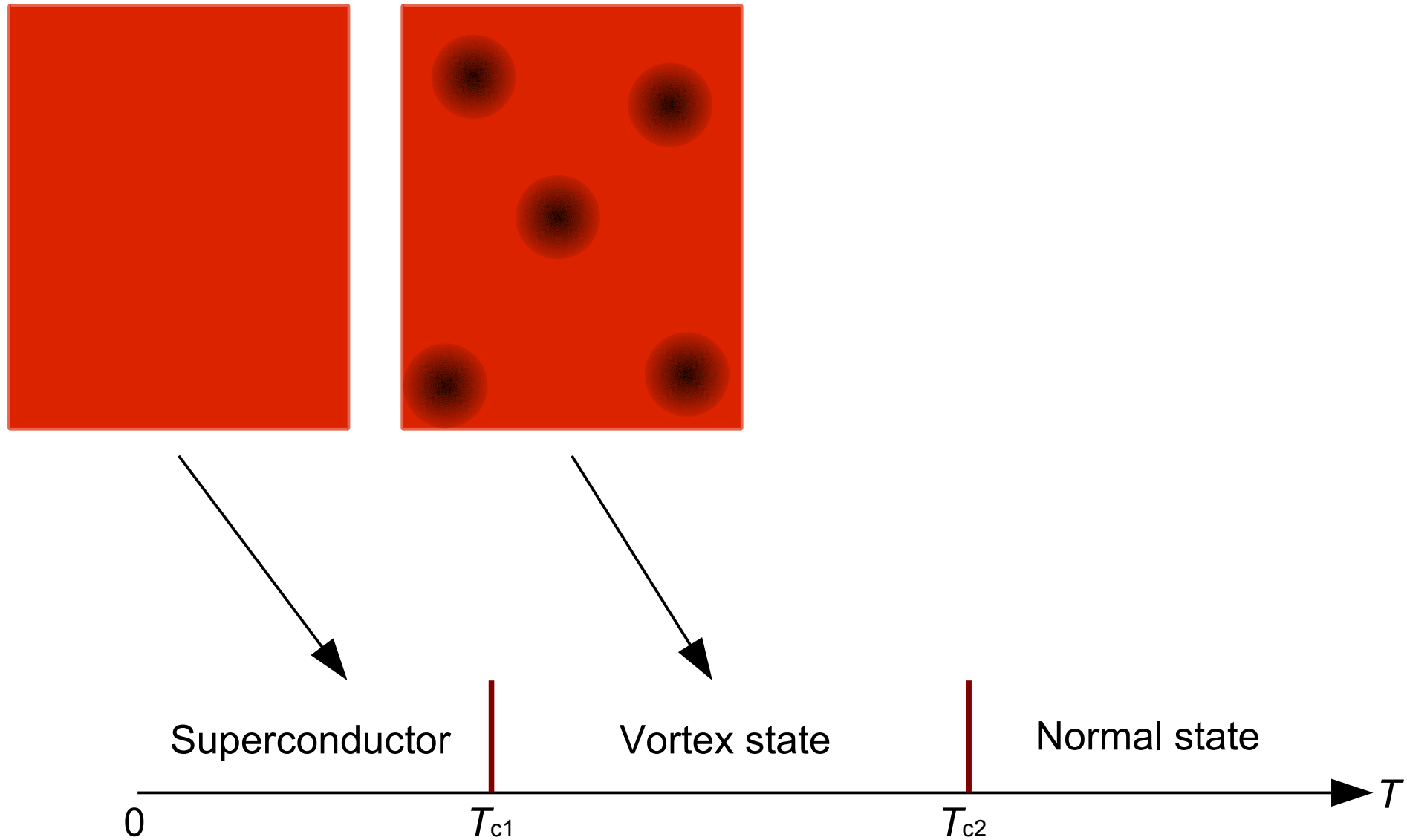
BCS superconductivity



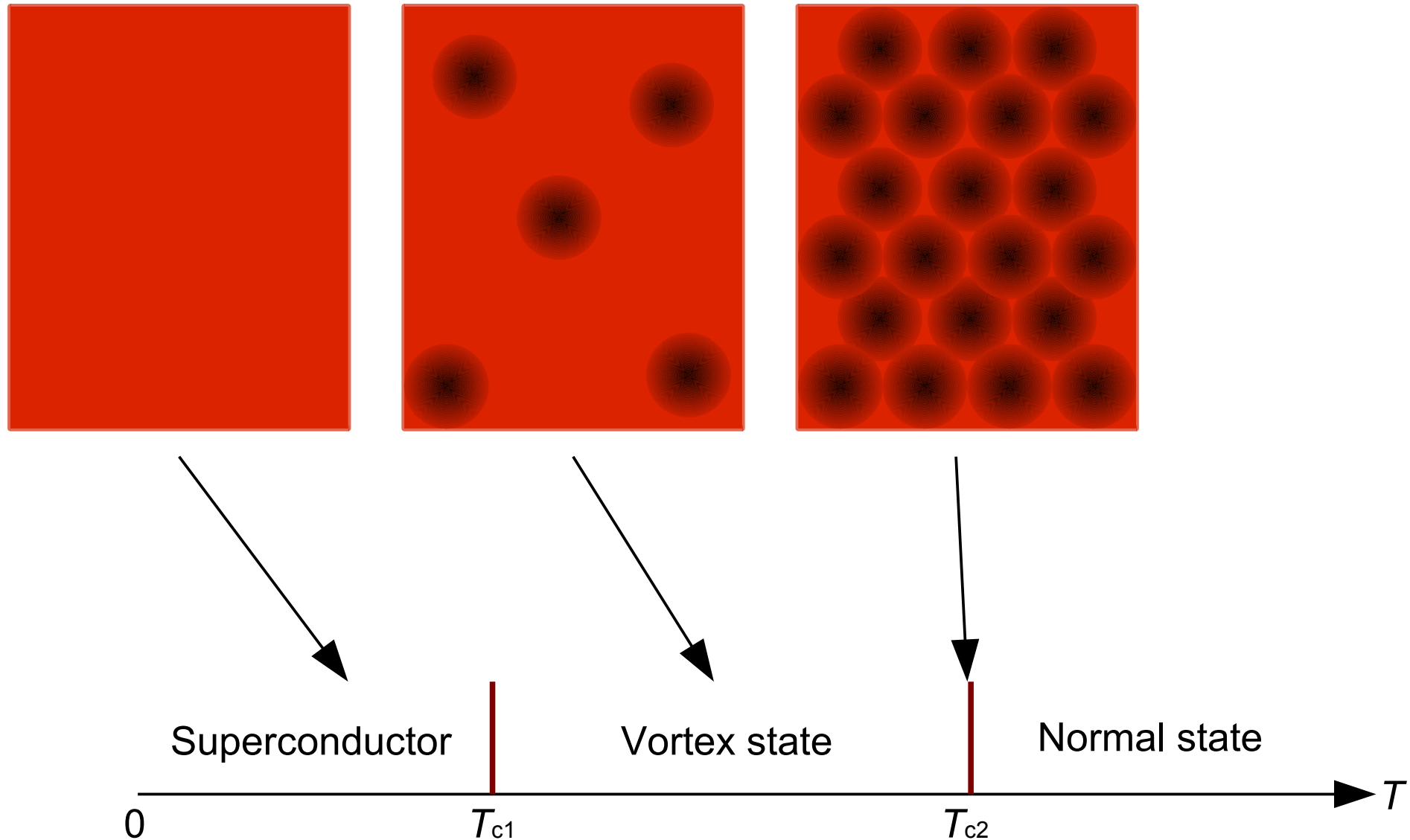
Kosterlitz Thouless transition



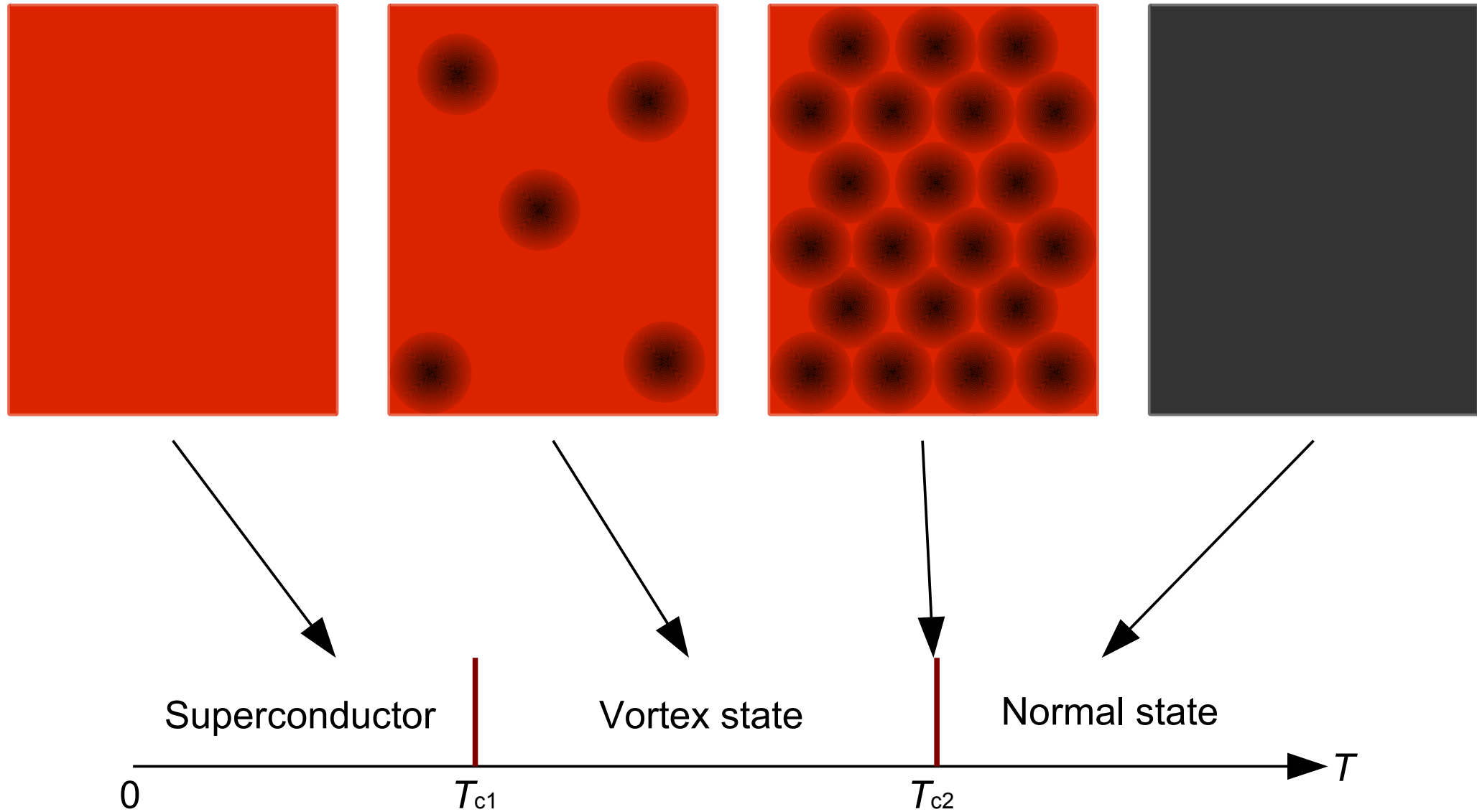
Kosterlitz Thouless transition



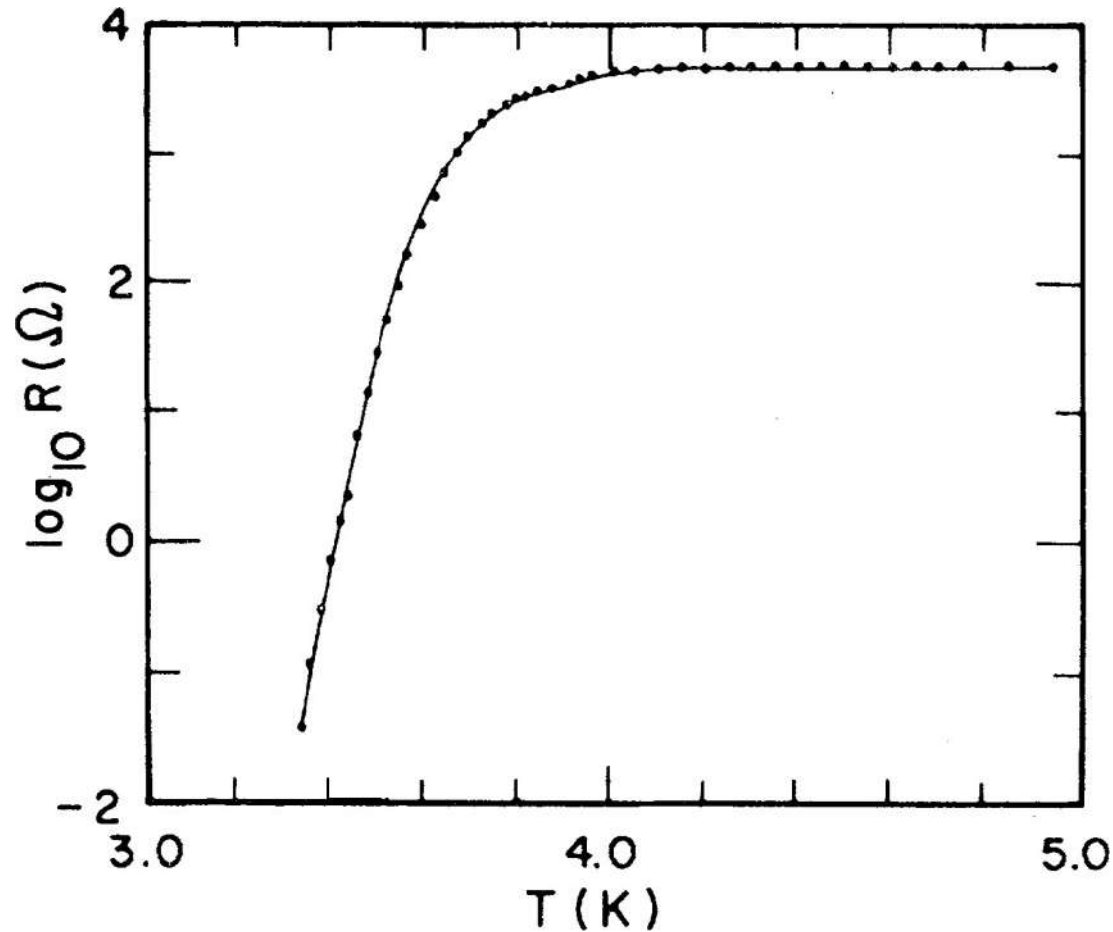
Kosterlitz Thouless transition



Kosterlitz Thouless transition



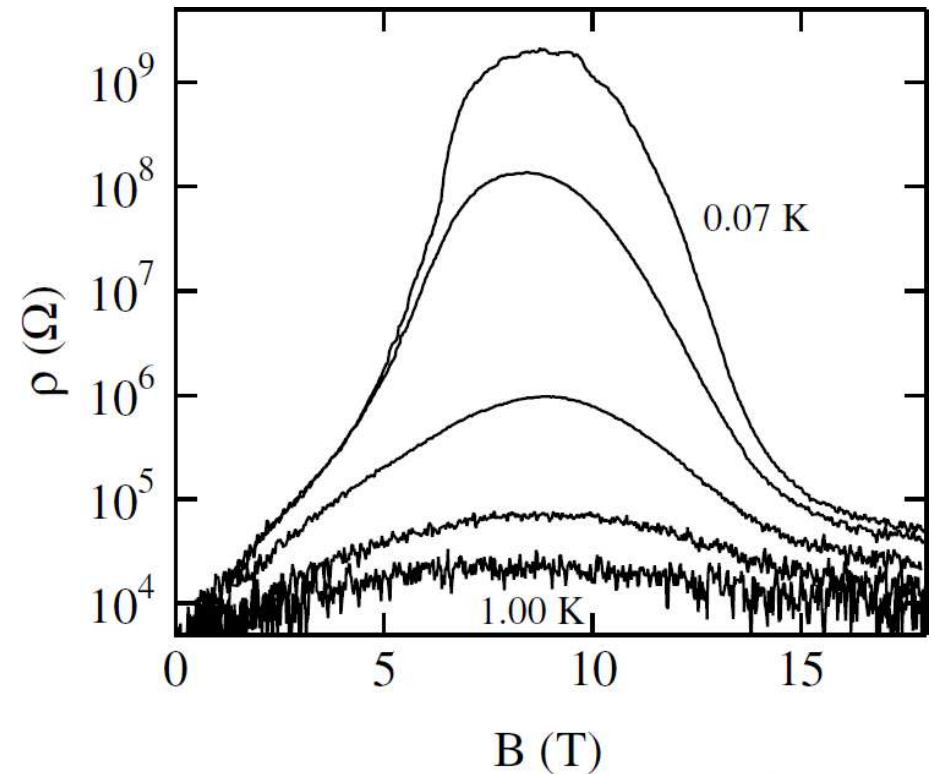
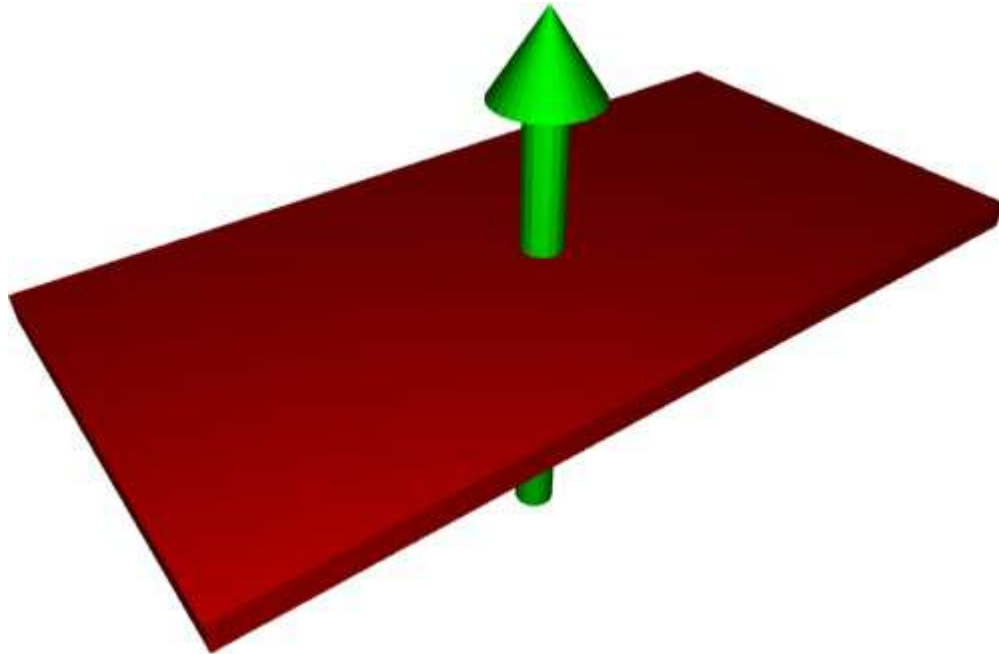
KT transition conductivity



Transition in highly disordered systems

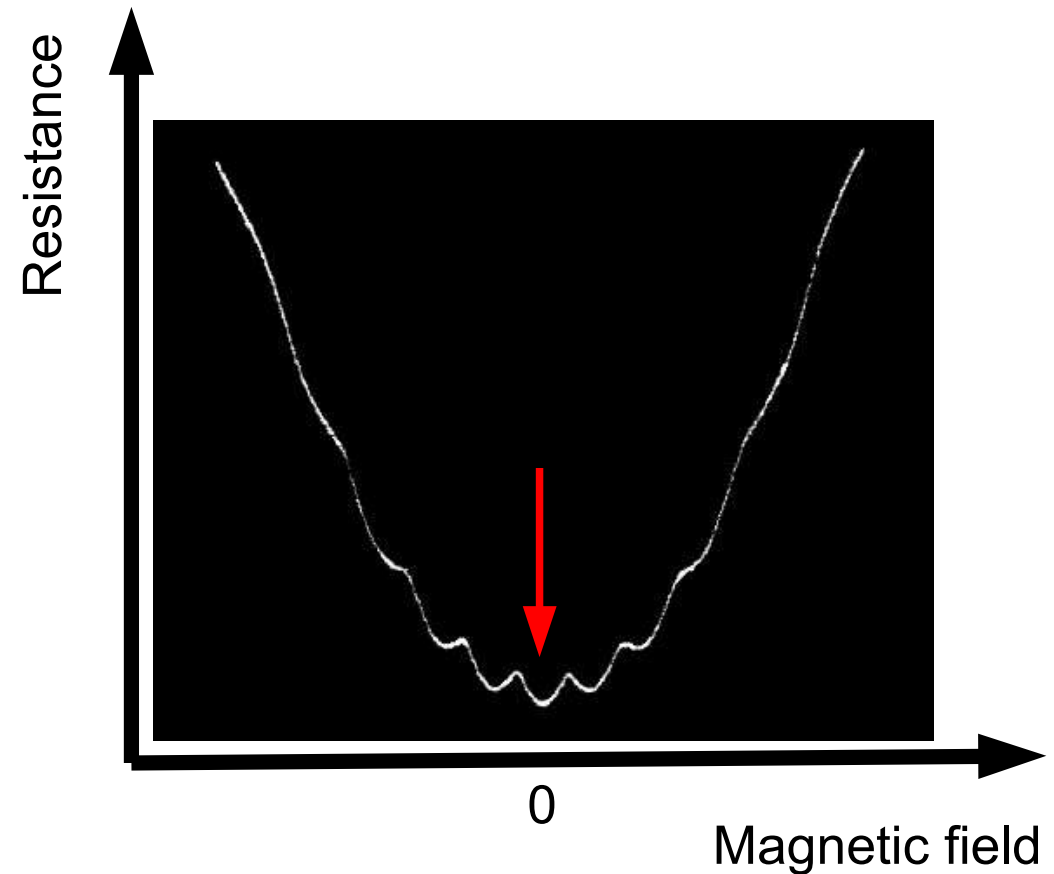
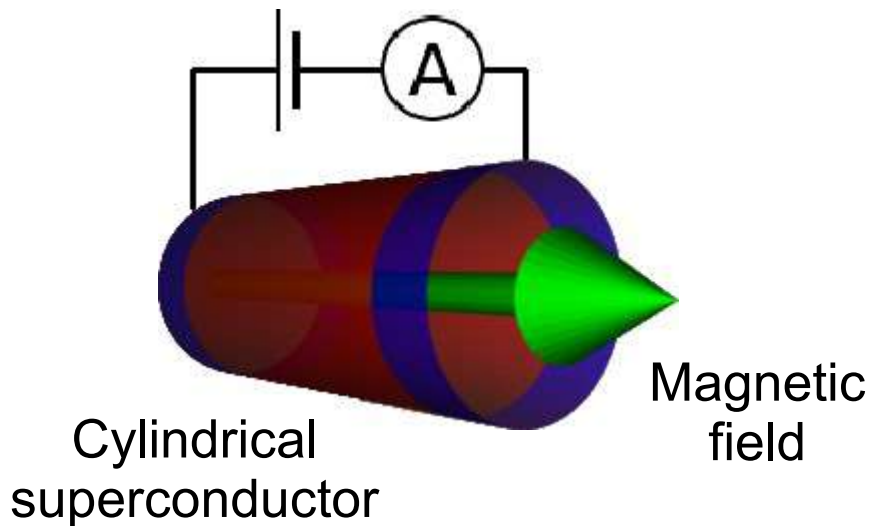
- Magnetoresistance peak [Sambandamurthy 04]

Perpendicular
magnetic field B



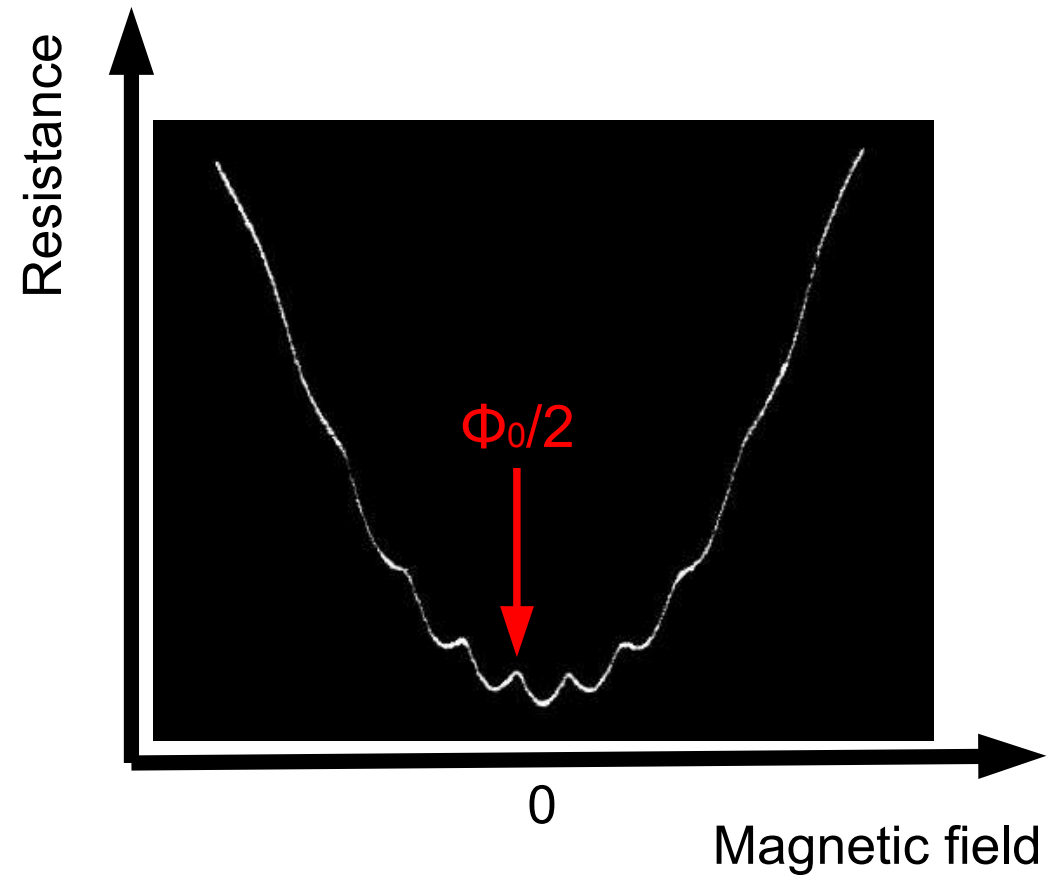
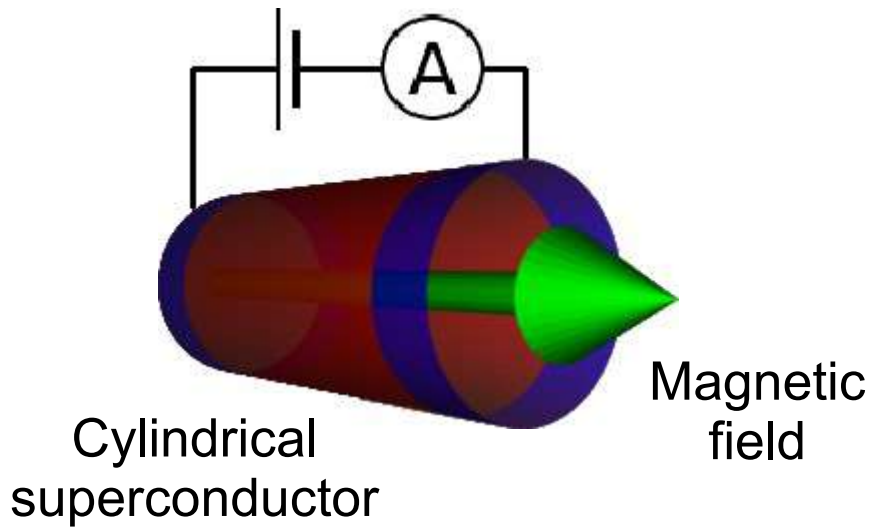
Little-Parks in a large diameter cylinder

- Cylindrical superconductor held at transition temperature and zero threading flux [Little & Parks, PRL 1962]



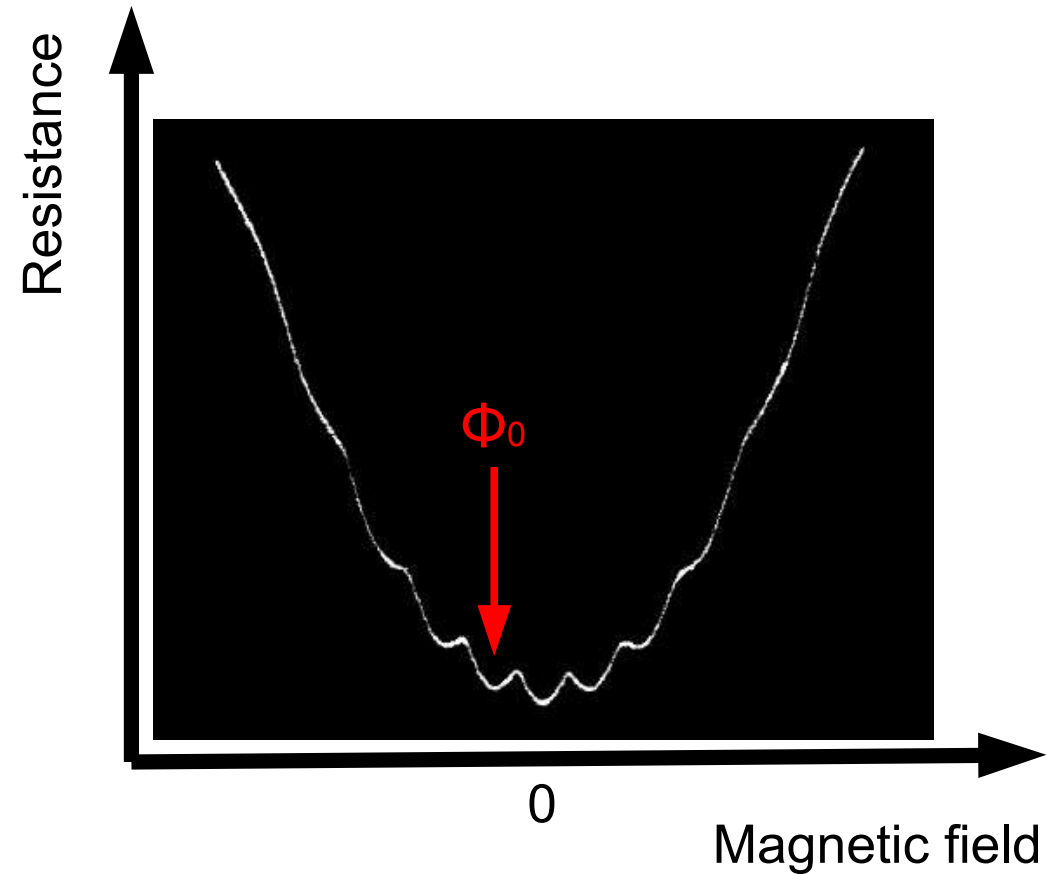
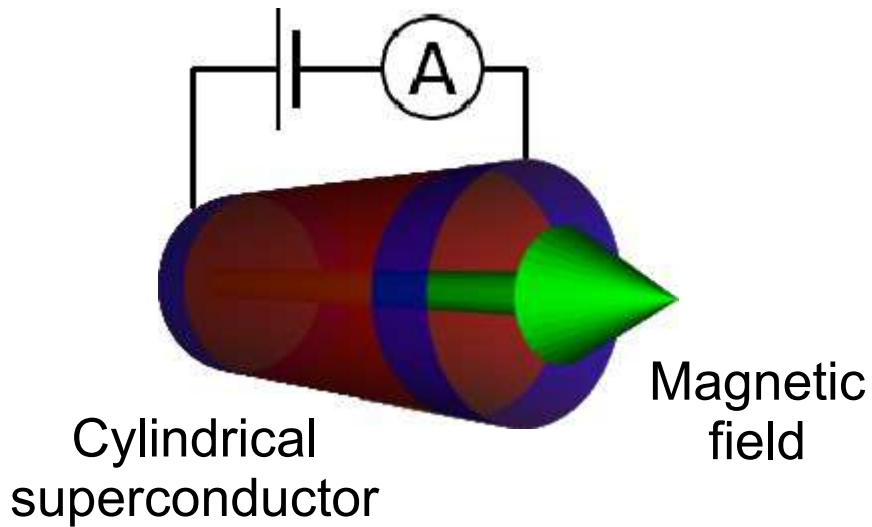
Little-Parks in a large diameter cylinder

- Cylindrical superconductor held at transition temperature and threading flux is increased [Little & Parks, PRL 1962]



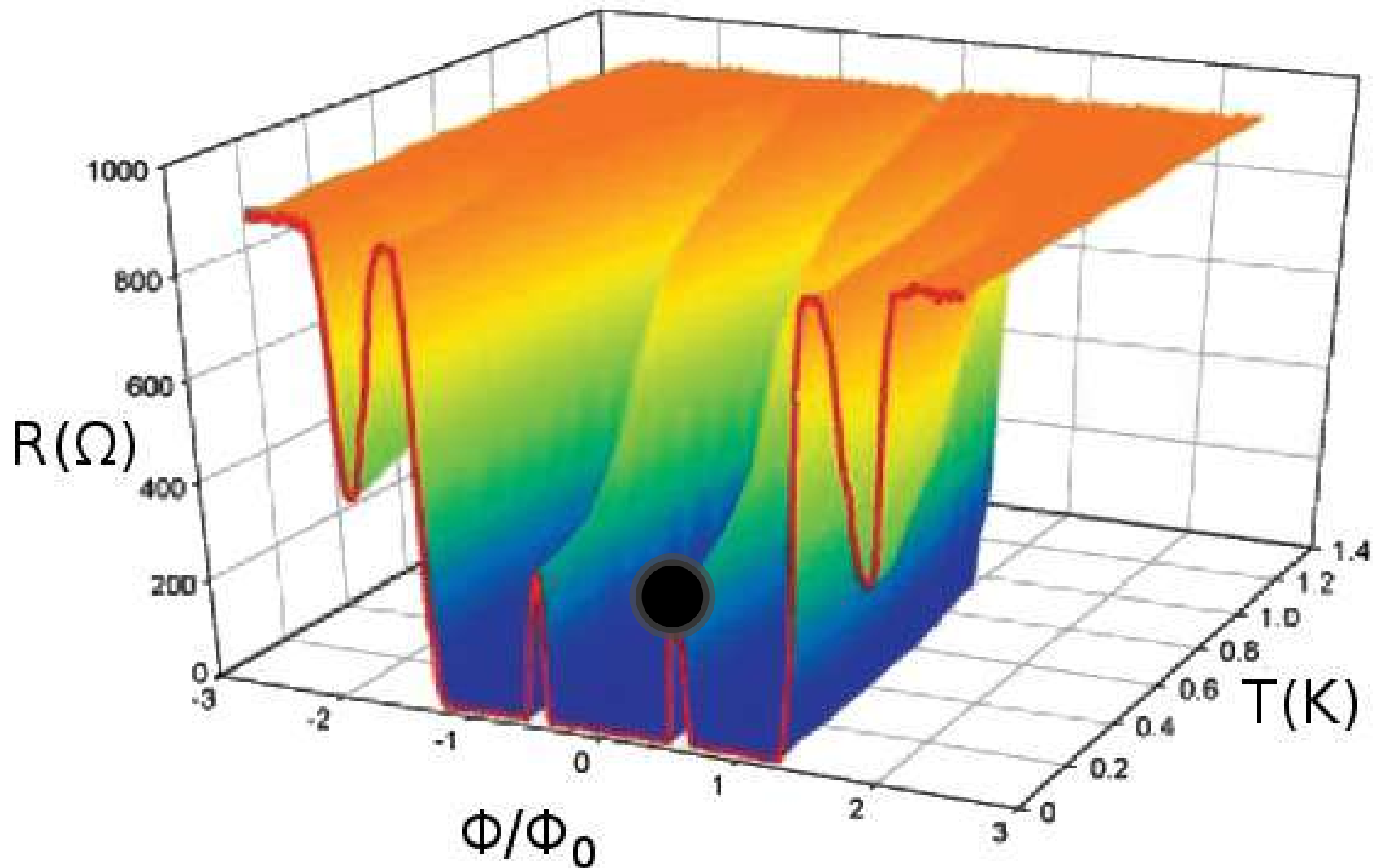
Little-Parks in a large diameter cylinder

- Cylindrical superconductor held at transition temperature and threading flux is increased [Little & Parks, PRL 1962]



Little-Parks in a small diameter cylinder

- Reduce cylinder diameter to superconducting correlation length [Liu *et al.*, Science 2001; Wang *et al.*, PRL 2005]



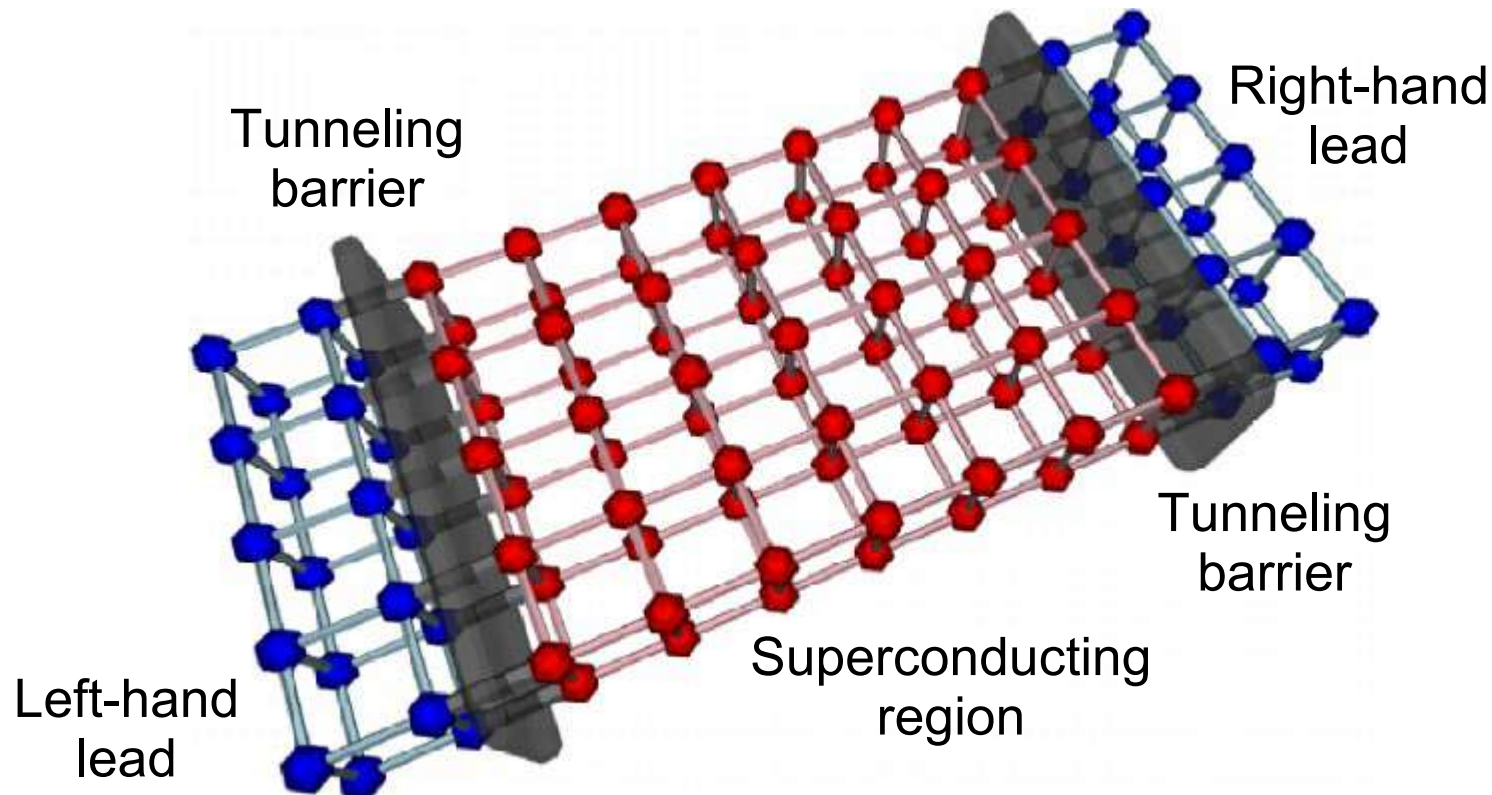
Strategy to study superconductors

- Develop new formalism to:
 - Calculate exact net current flow
 - Extract the microscopic current flow
 - Account for phase and amplitude fluctuations
 - Develop algorithm that permits access to large systems
- Test the formalism against a series of well-established results
- Study the Little Parks effect and magnetoresistance peak

How to calculate the current

- General expression for the current [Meir & Wingreen, PRL 1992]

$$J = \frac{ie}{2h} \int d\epsilon \left[\text{Tr} \left\{ (f_L(\epsilon)\Gamma^L - f_R(\epsilon)\Gamma^R) (G_{e\sigma}^r - G_e^{a\sigma}) \right\} + \text{Tr} \left\{ (\Gamma^L - \Gamma^R) G_{e\sigma}^< \right\} \right]$$



Decoupling the interactions

- Negative U Hubbard model

$$\hat{H}_{\text{Hubbard}} = \sum_{i,\sigma} \epsilon_{i\sigma} c_{i\sigma}^\dagger c_{i\sigma} - \sum_i U_i c_{i\uparrow}^\dagger c_{i\downarrow}^\dagger c_{i\downarrow} c_{i\uparrow} \\ - \sum_{\langle i,j \rangle, \sigma} \left(t_{ij} c_{i\sigma}^\dagger c_{j\sigma} + t_{ij}^* c_{j\sigma}^\dagger c_{i\sigma} \right)$$

- Decouple Hamiltonian in density and Cooper pair channels

$$\hat{\mathcal{H}}_{\text{BdG}} = \sum_{i,\sigma} (\epsilon_i + \rho_i) c_{i\sigma}^\dagger c_{i\sigma} - \sum_{\langle i,j \rangle, \sigma} \left(t_{ij} c_{i\sigma}^\dagger c_{j\sigma} + t_{ij}^* c_{j\sigma}^\dagger c_{i\sigma} \right) \\ + \sum_i \left(\Delta_i c_{i\uparrow}^\dagger c_{i\downarrow}^\dagger + \bar{\Delta}_i c_{i\downarrow} c_{i\uparrow} \right) + \sum_i \frac{|\Delta_i|^2 + \rho_i^2}{U_i}$$

Accelerated Metropolis sampling

- To perform thermal sum calculate

$$\langle J \rangle = \sum_{\Delta, \rho} J[\Delta, \rho] e^{-\beta(E[\Delta, \rho] - E_0)}$$

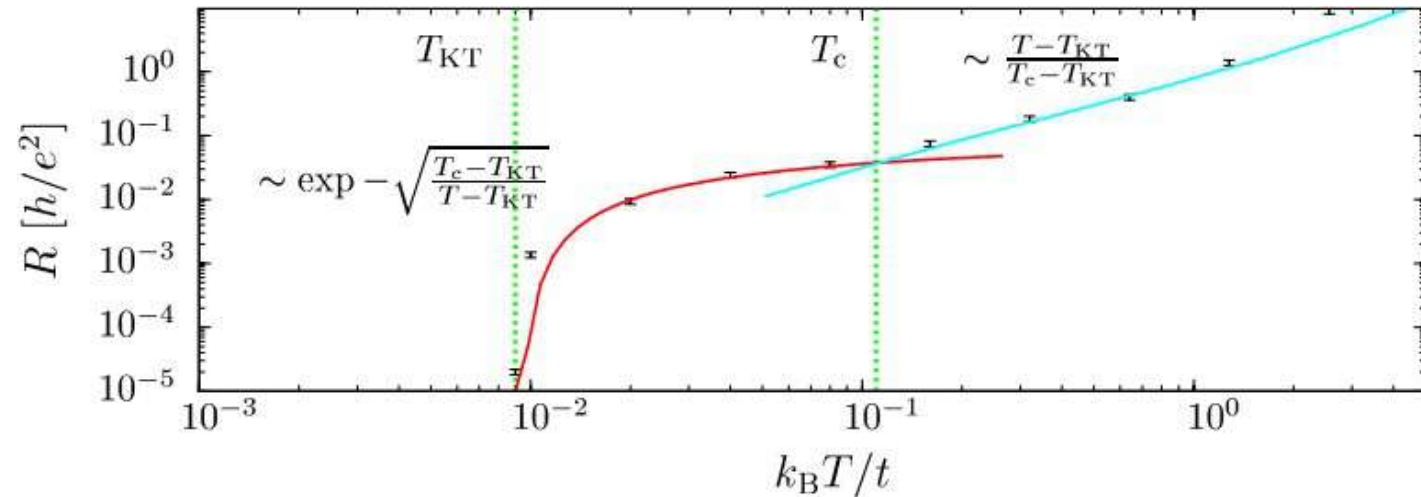
- Propose new configuration of Δ and ρ , accept with probability

$$\exp(\beta E[\Delta_{\text{old}}, \rho_{\text{old}}] - \beta E[\Delta_{\text{new}}, \rho_{\text{new}}])$$

- Calculating $E[\Delta, \rho]$ costs $O(N^4)$, where N is the number of sites
- New method calculates $E[\Delta, \rho] - E[\Delta + \delta \Delta, \rho + \delta \rho]$ using a order M Chebyshev expansion [Weisse 09] in $O(N^{1.9} M^{2/3})$ time

Verification

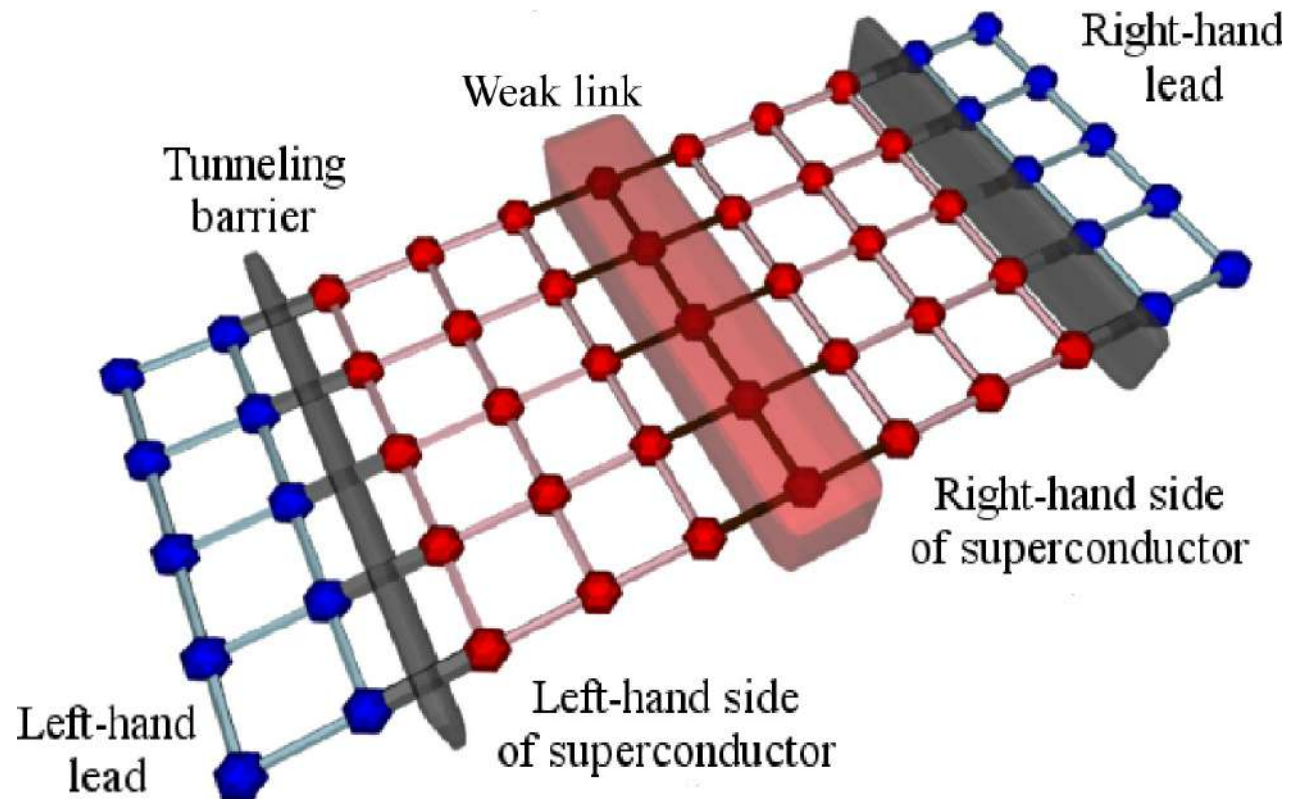
- Resistivity at the Kosterlitz-Thouless transition
- Nonlinear I/V characteristics
- Length dependence of conductivity
- Andreev reflection
- Josephson junction
- Little-Parks effect in large diameter cylinder



Halperin & Nelson, J. Low Temp. Phys 1979
Ambegaokar *et al.*, PRB 1980

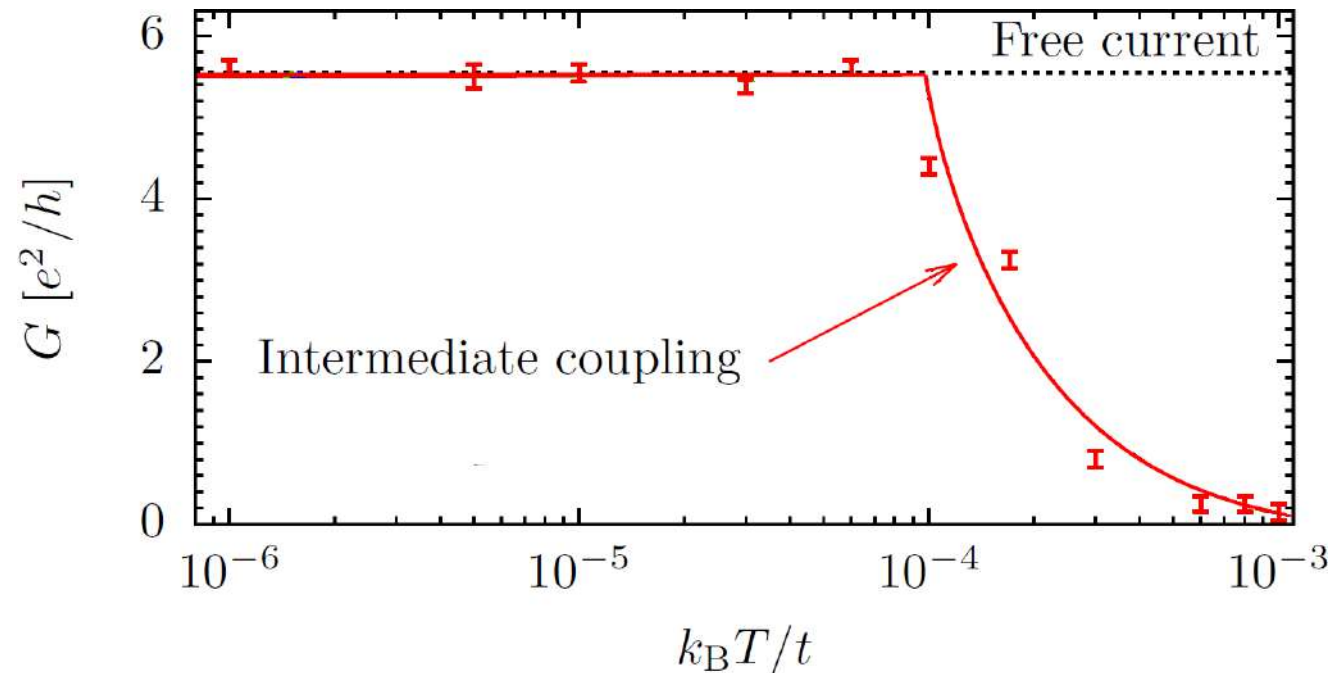
Verification

- Resistivity at the Kosterlitz-Thouless transition
- Nonlinear I/V characteristics
- Length dependence of conductivity
- Andreev reflection
- Josephson junction
- Little-Parks effect in large diameter cylinder



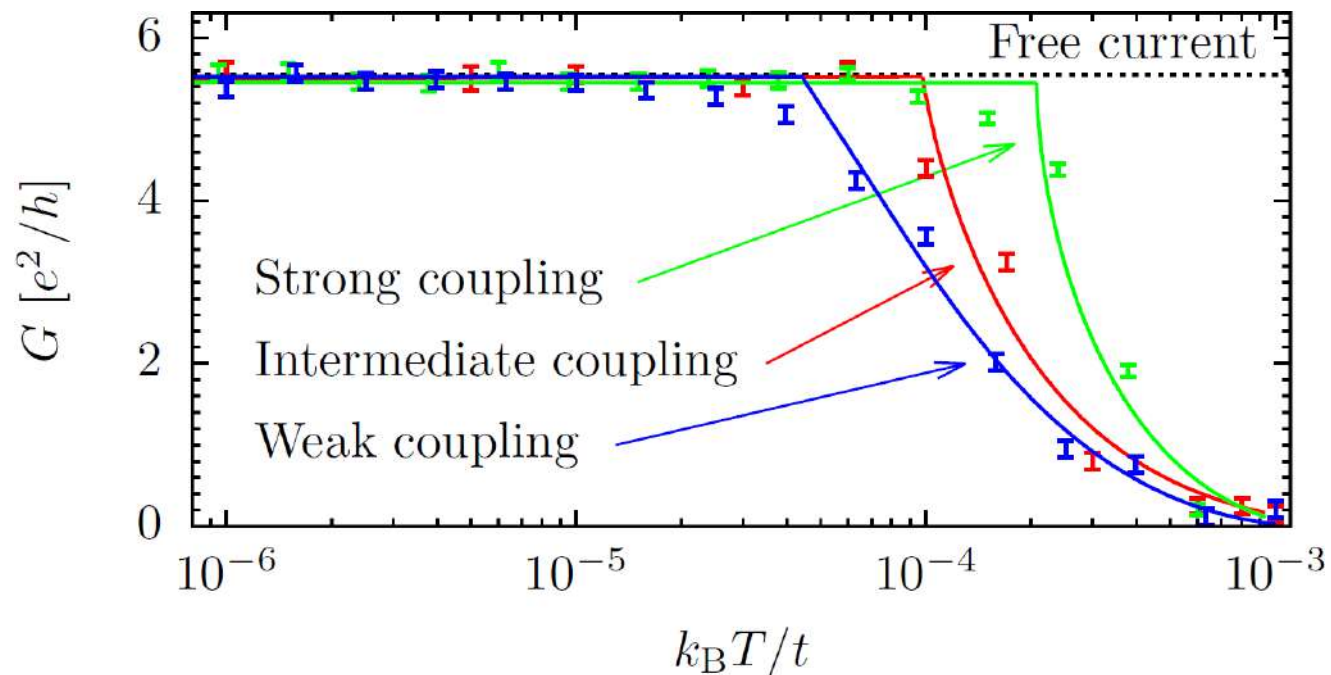
Verification

- Resistivity at the Kosterlitz-Thouless transition
- Nonlinear I/V characteristics
- Length dependence of conductivity
- Andreev reflection
- Josephson junction
- Little-Parks effect in large diameter cylinder



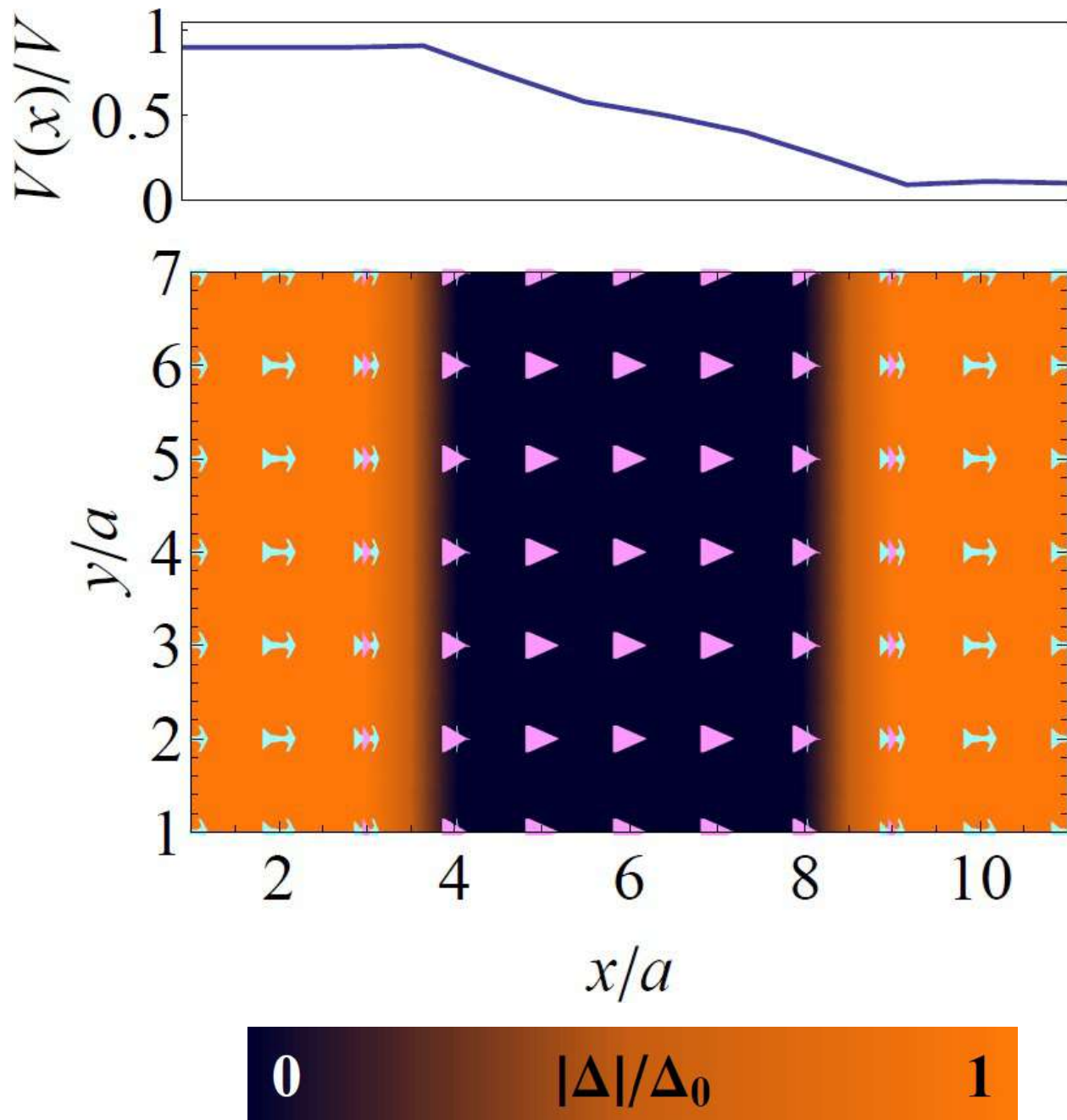
Verification

- Resistivity at the Kosterlitz-Thouless transition
- Nonlinear I/V characteristics
- Length dependence of conductivity
- Andreev reflection
- **Josephson junction**
- Little-Parks effect in large diameter cylinder



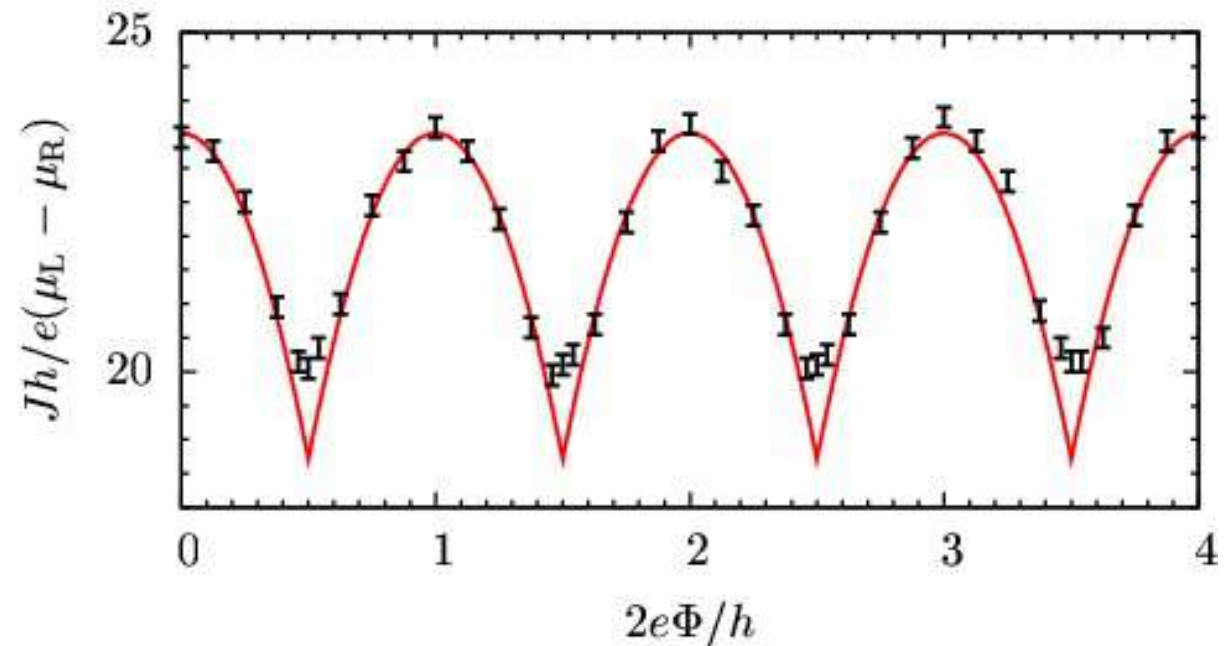
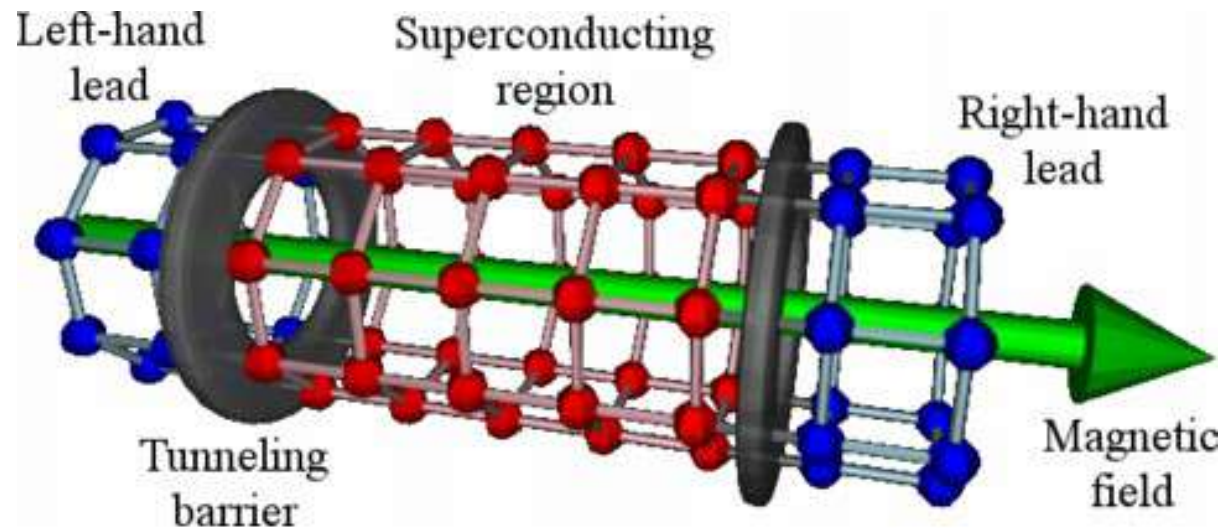
Verification

- Resistivity at the Kosterlitz-Thouless transition
- Nonlinear I/V characteristics
- Length dependence of conductivity
- Andreev reflection
- Josephson junction
- Little-Parks effect in large diameter cylinder

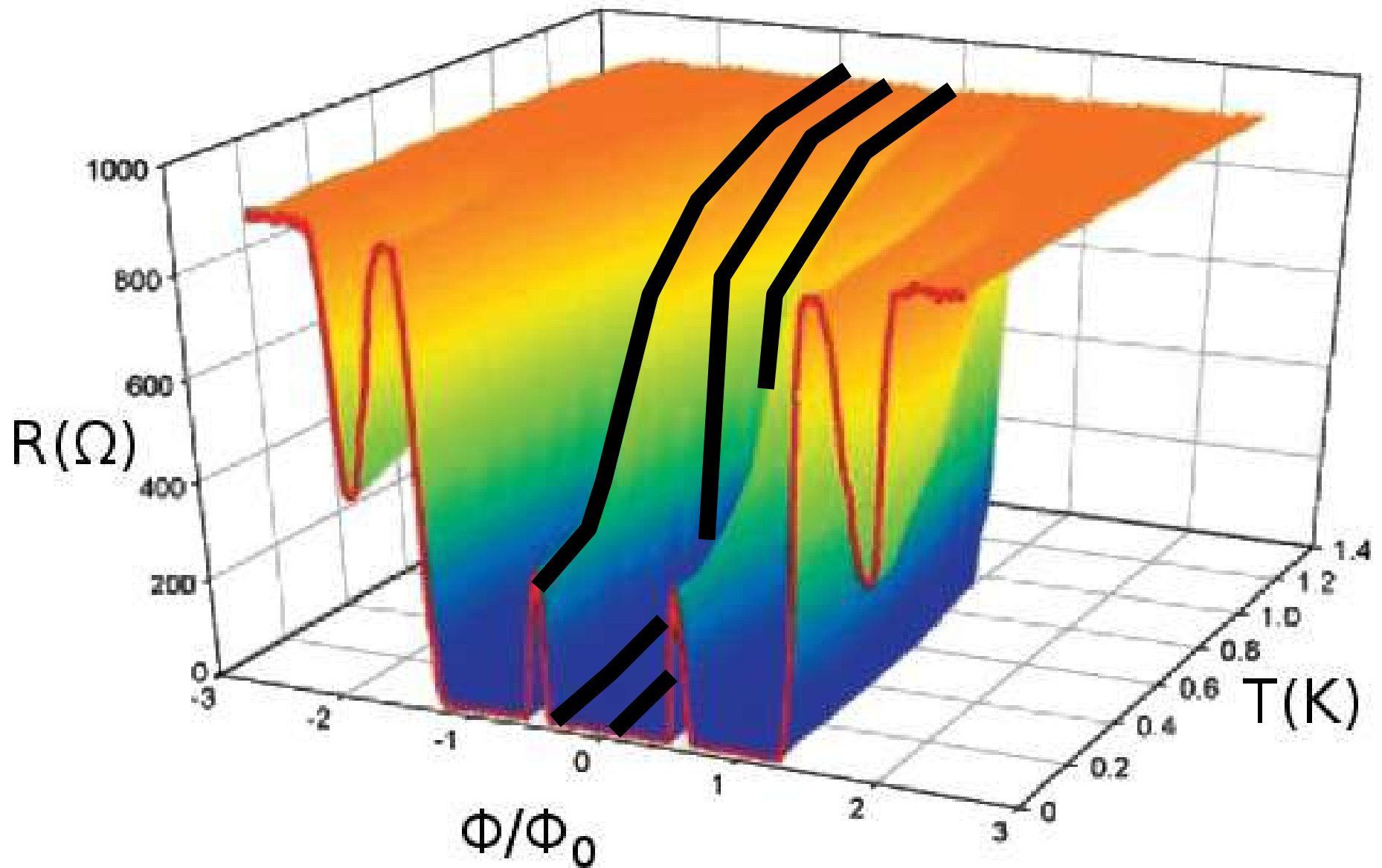


Verification

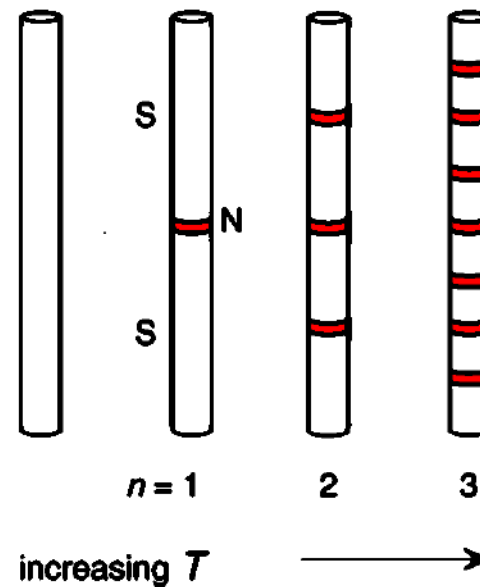
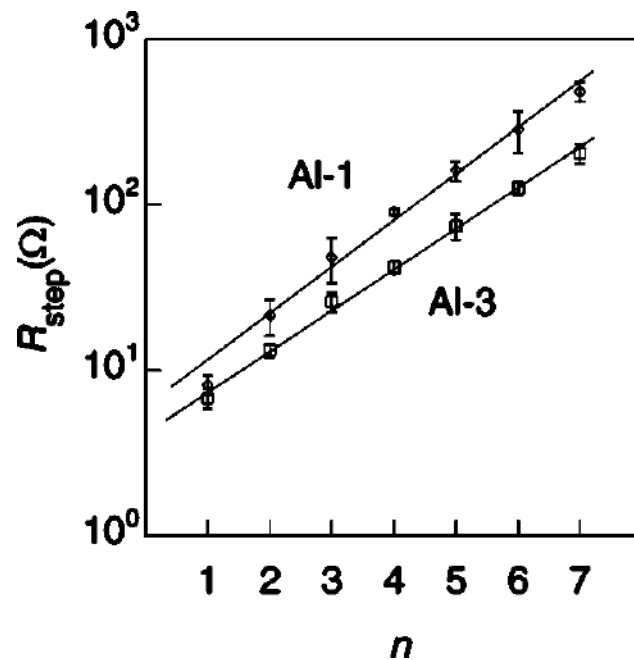
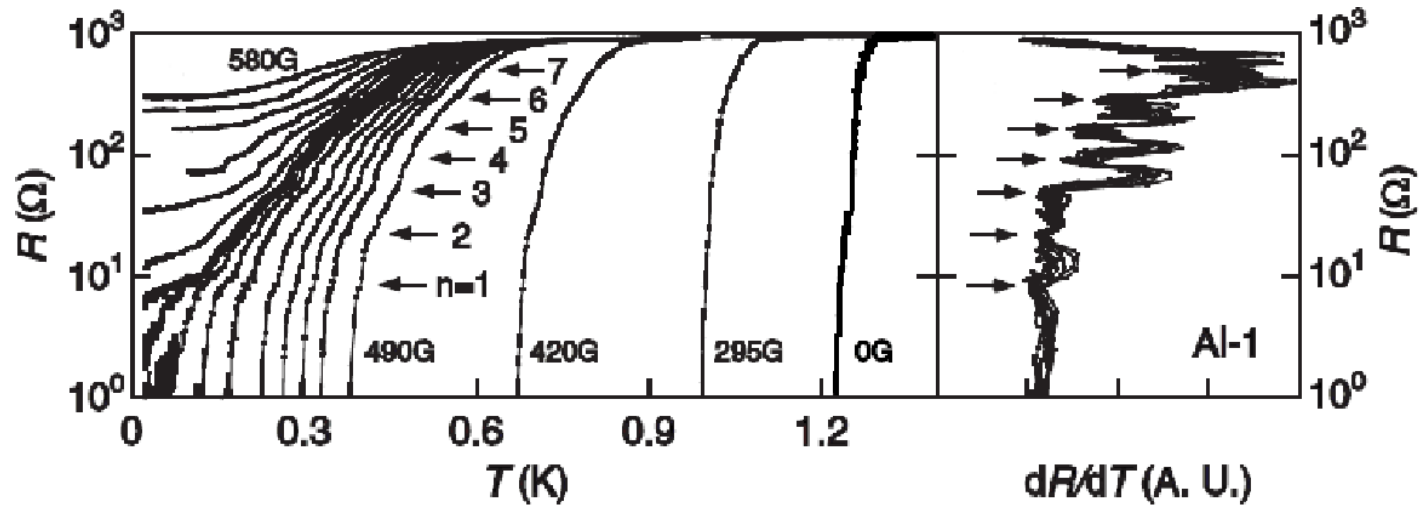
- Resistivity at the Kosterlitz-Thouless transition
- Nonlinear I/V characteristics
- Length dependence of conductivity
- Andreev reflection
- Josephson junction
- Little-Parks effect in large diameter cylinder



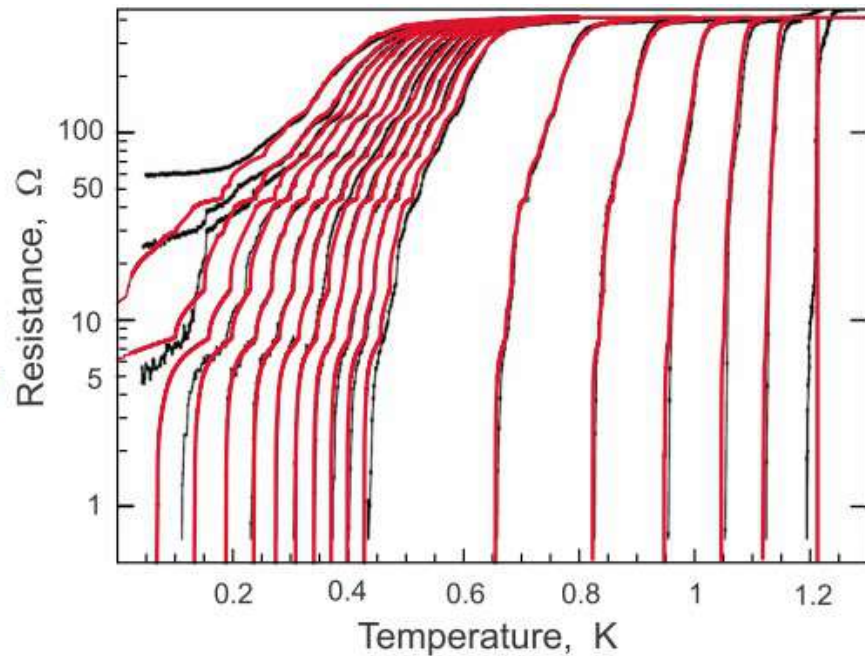
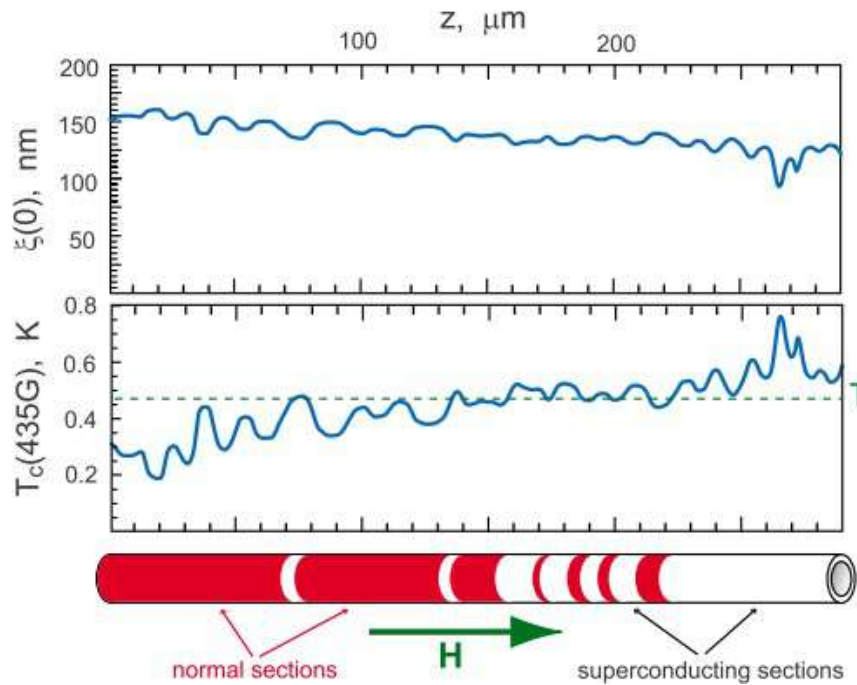
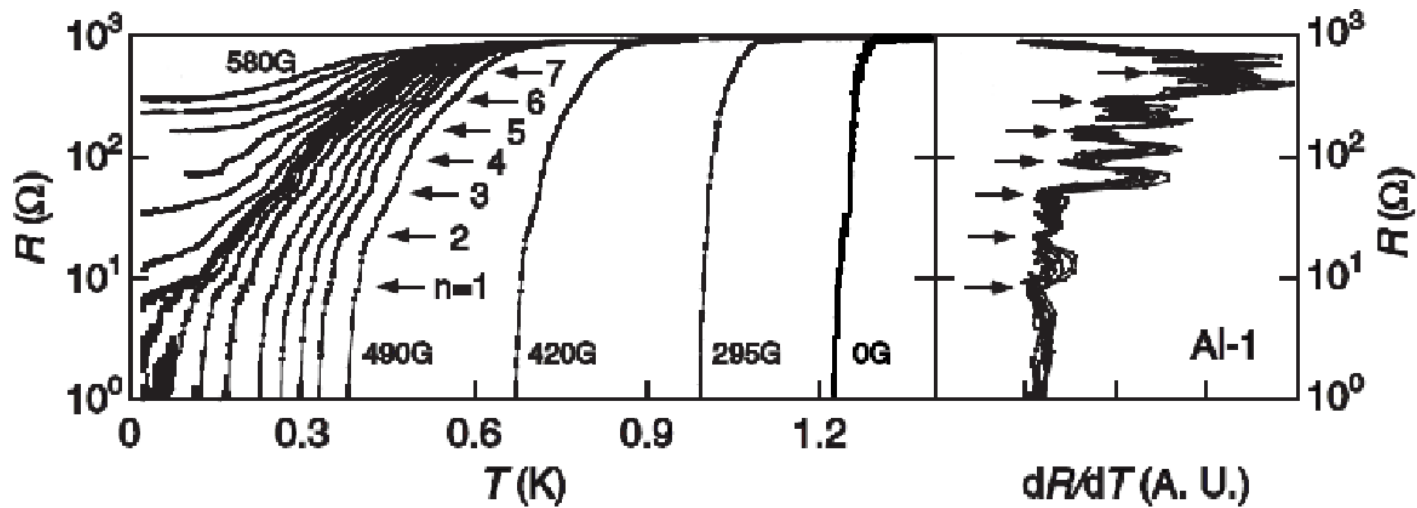
Little-Parks in a small diameter cylinder



Quantum phase transition hypothesis

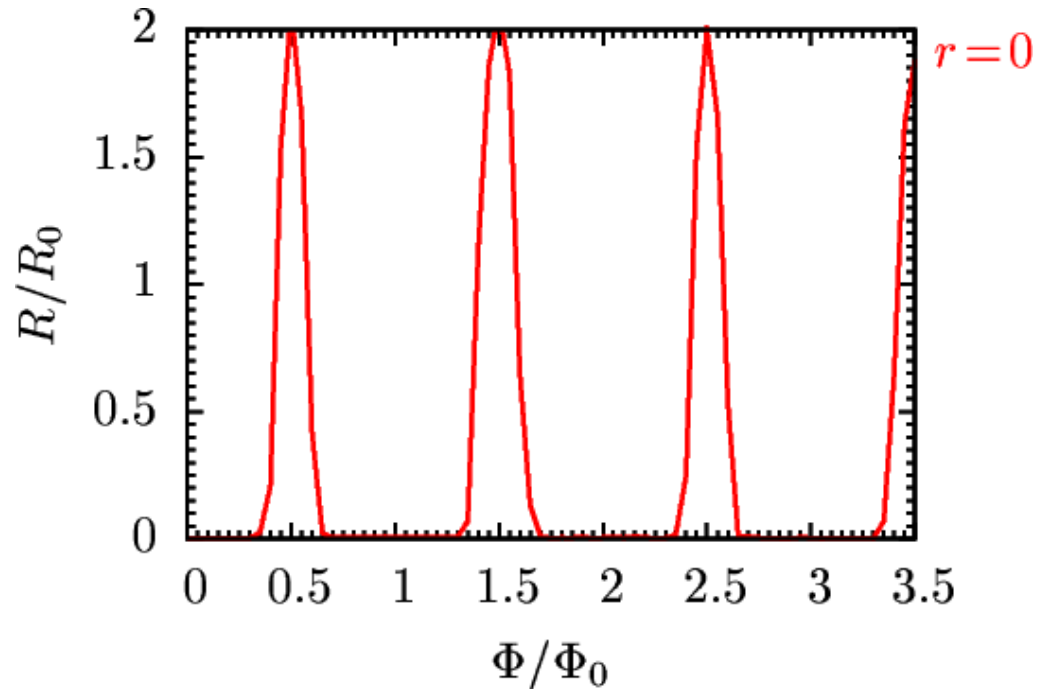


Mean-field BCS transition hypothesis

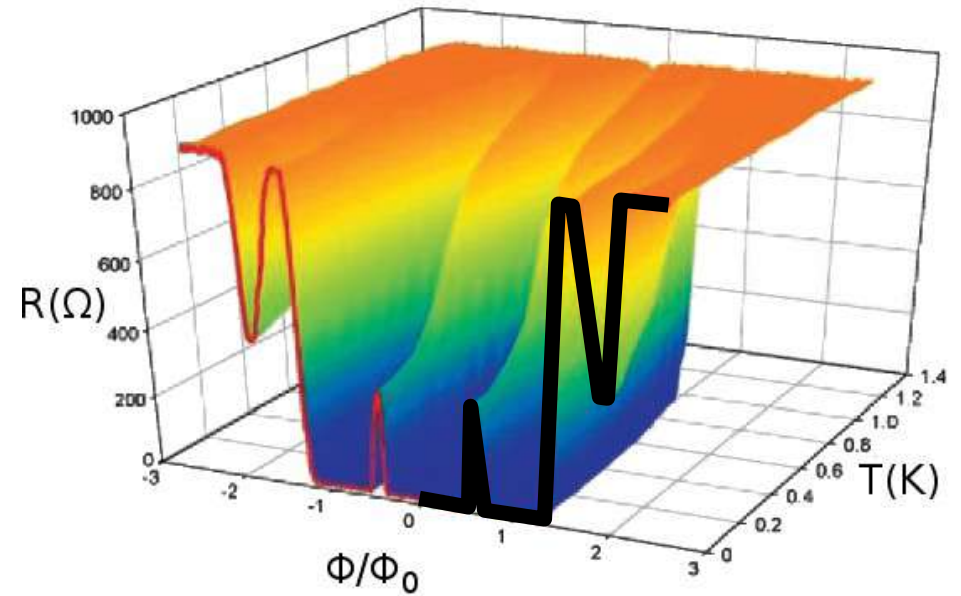


Little-Parks in a small diameter cylinder

Theory:

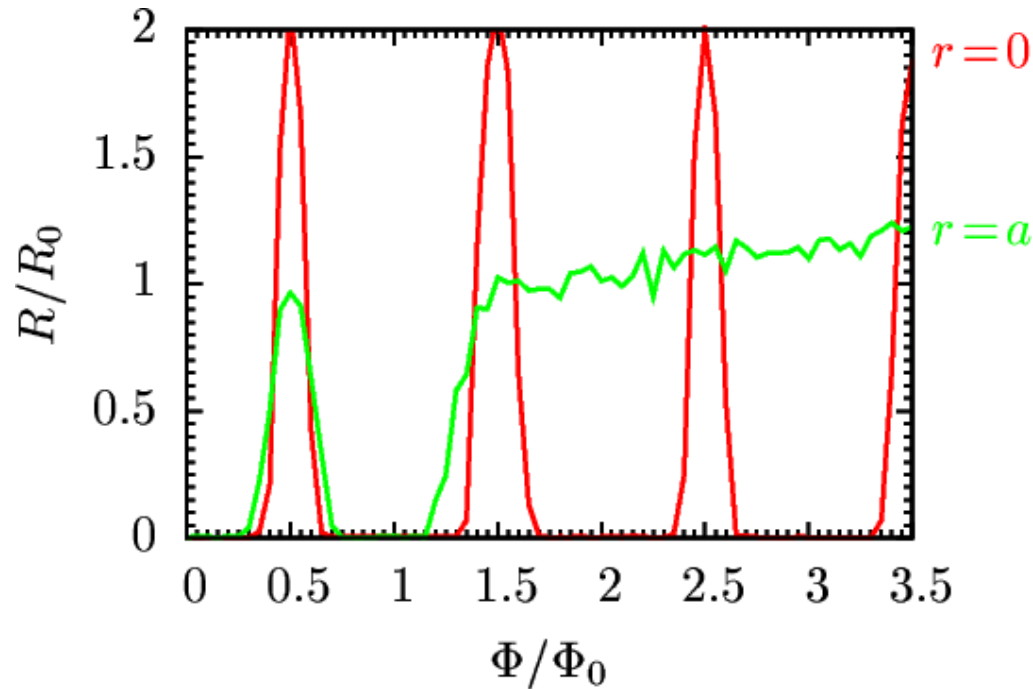


Experiment:

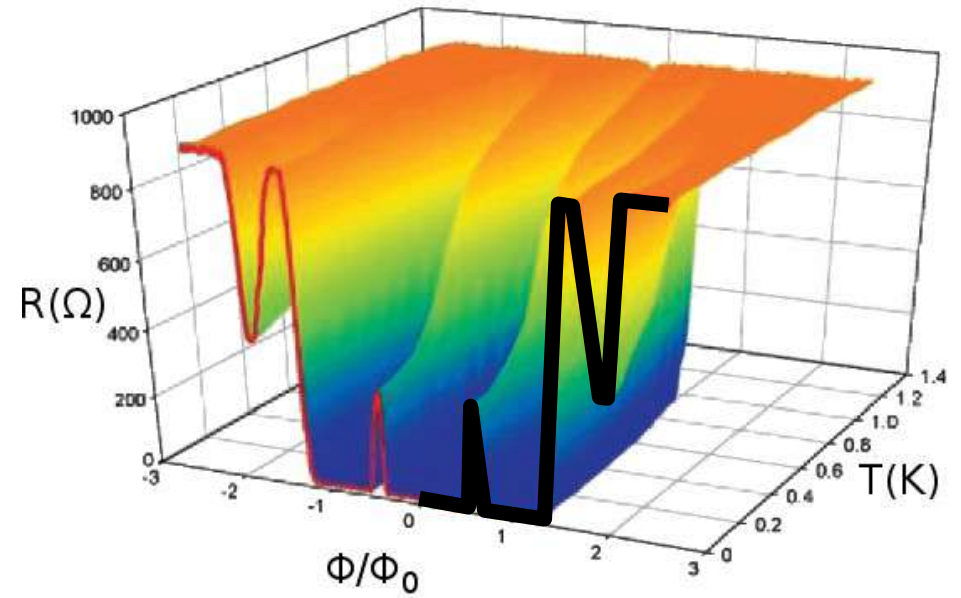


Little-Parks in a small diameter cylinder

Theory:

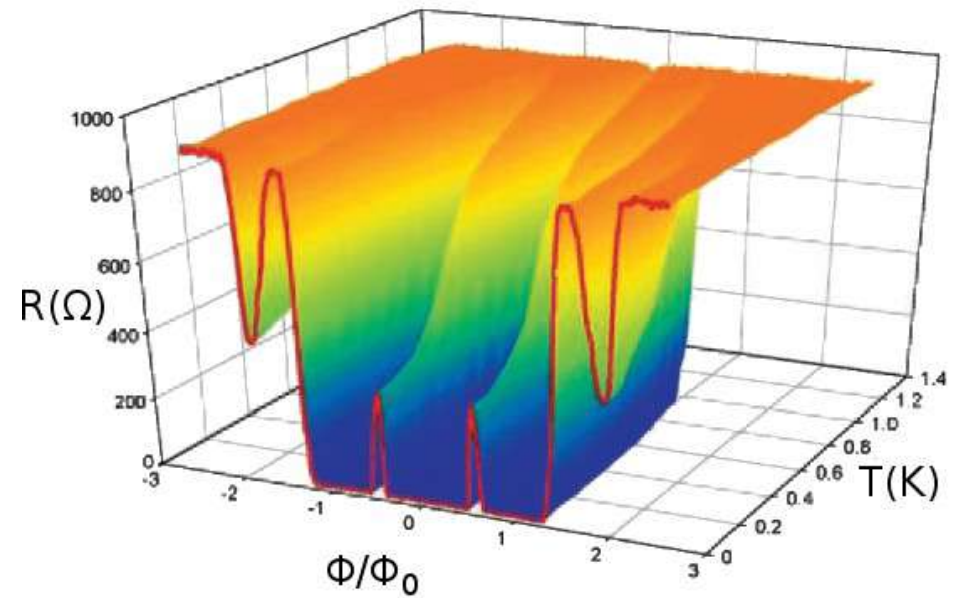


Experiment:

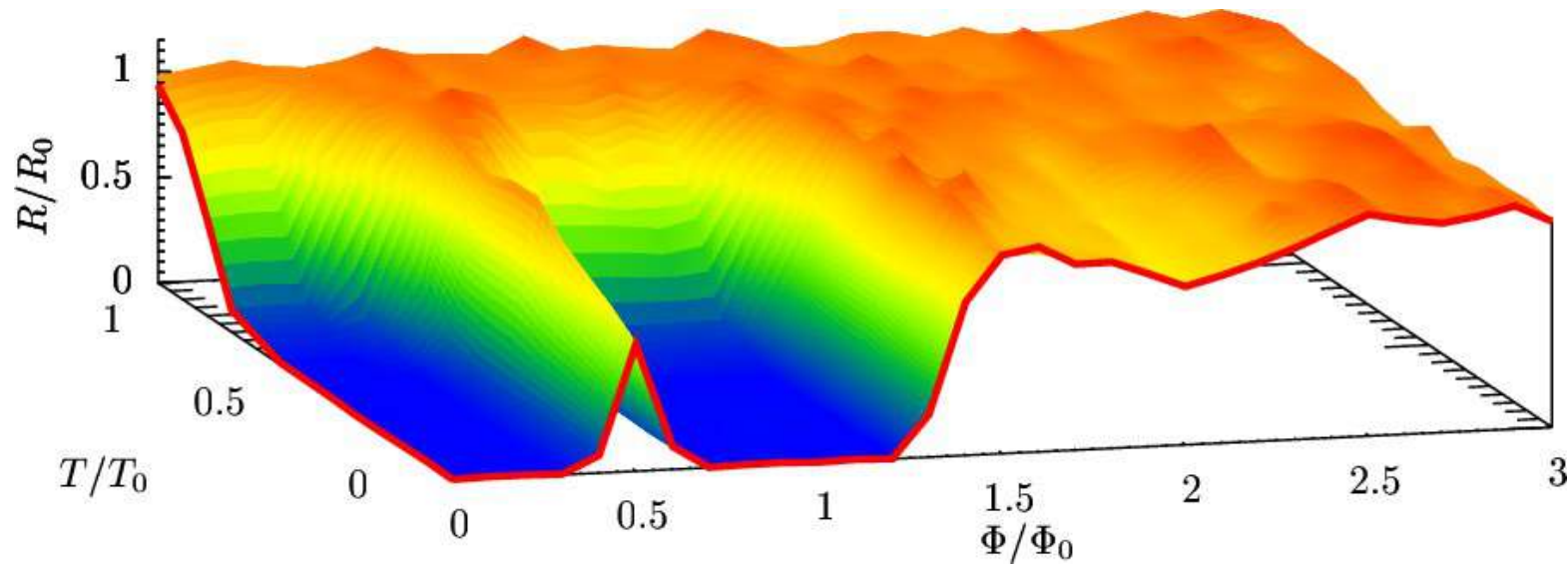


Little-Parks in a small diameter cylinder

Experiment:

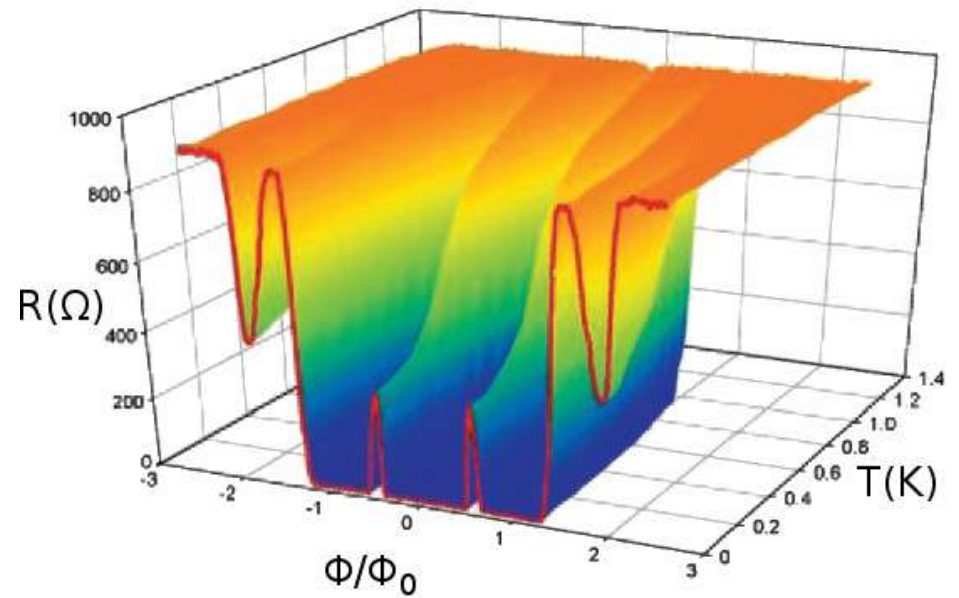


Theory:

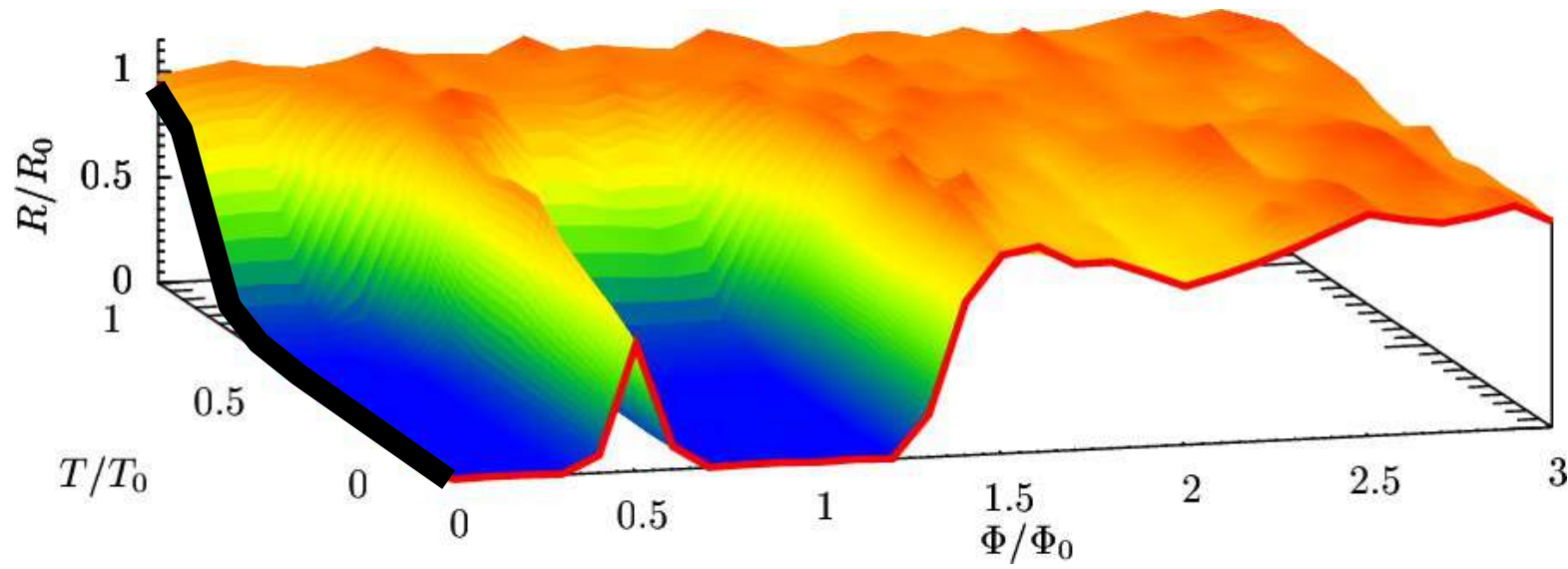


Little-Parks in a small diameter cylinder

Experiment:

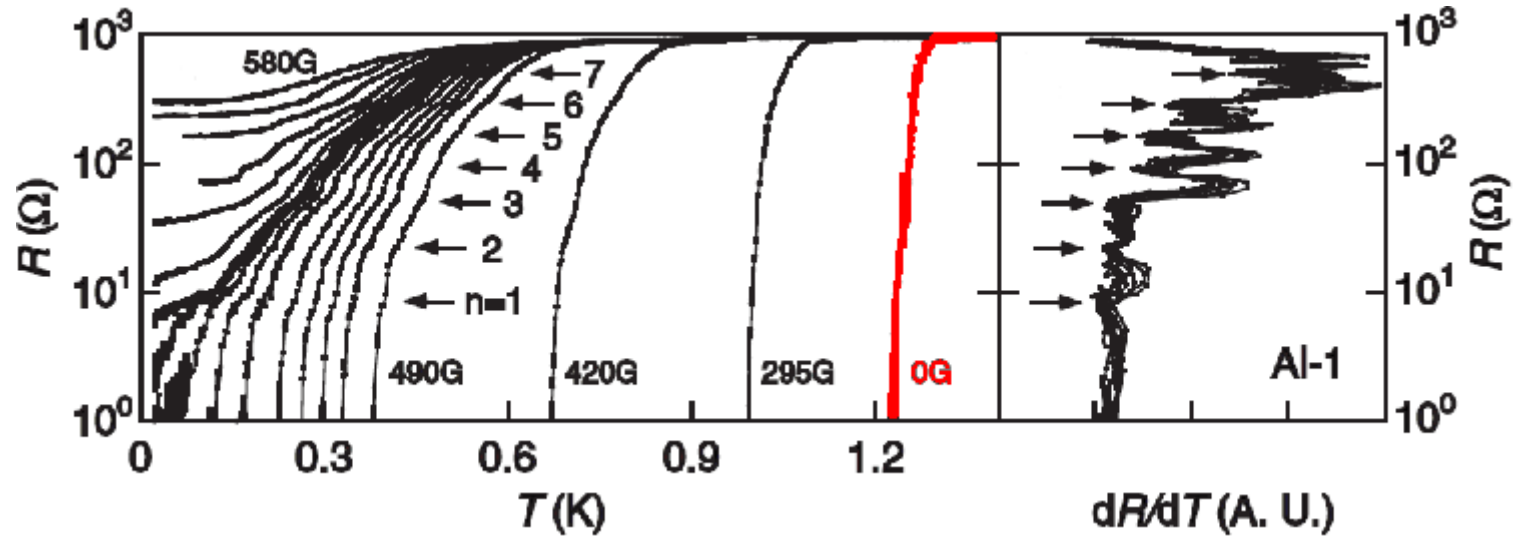


Theory:

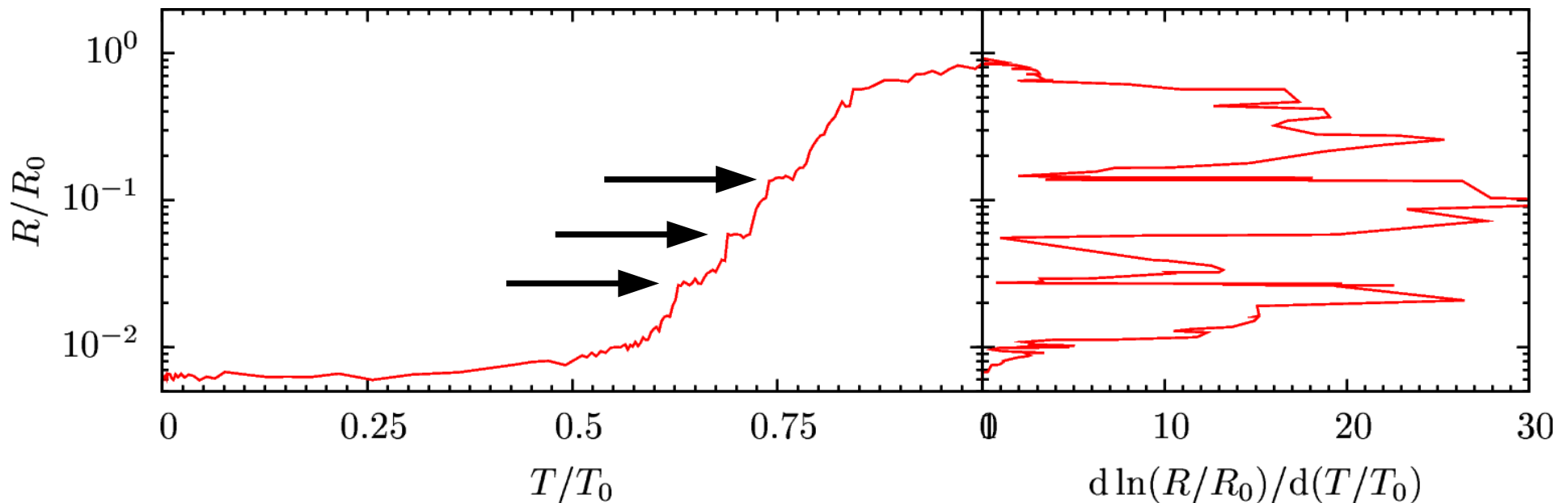


Evidence of phase reconstruction

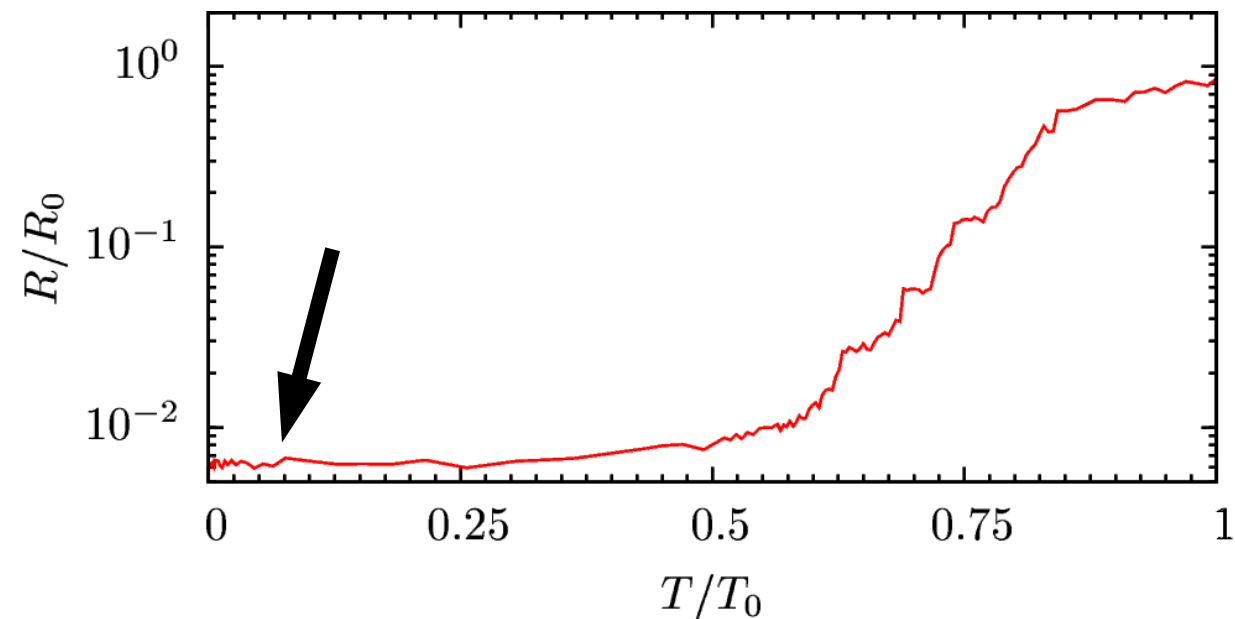
- Experiment:



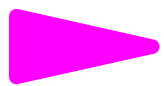
- Theory:



Completely superconducting



Superconducting current

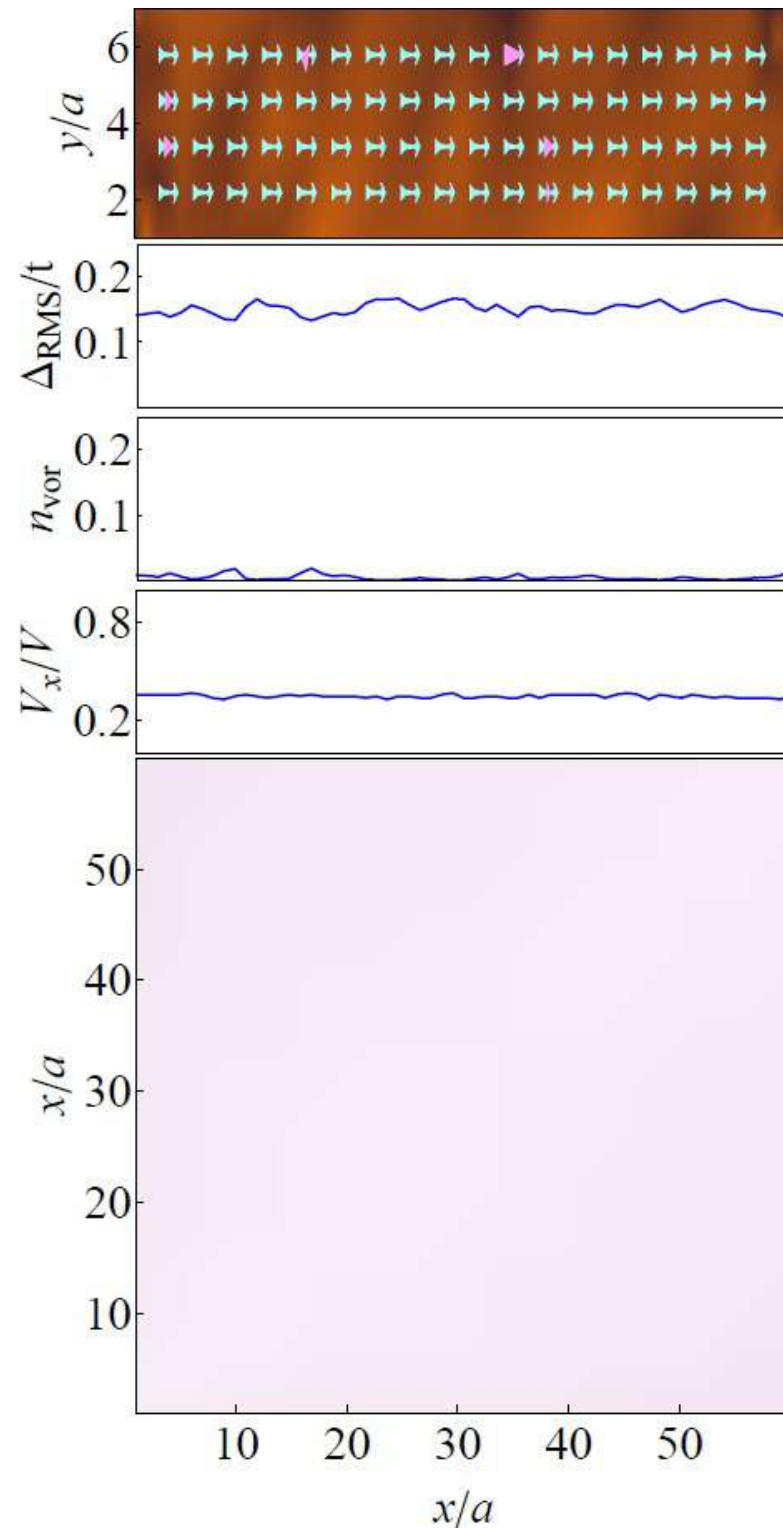


Normal current

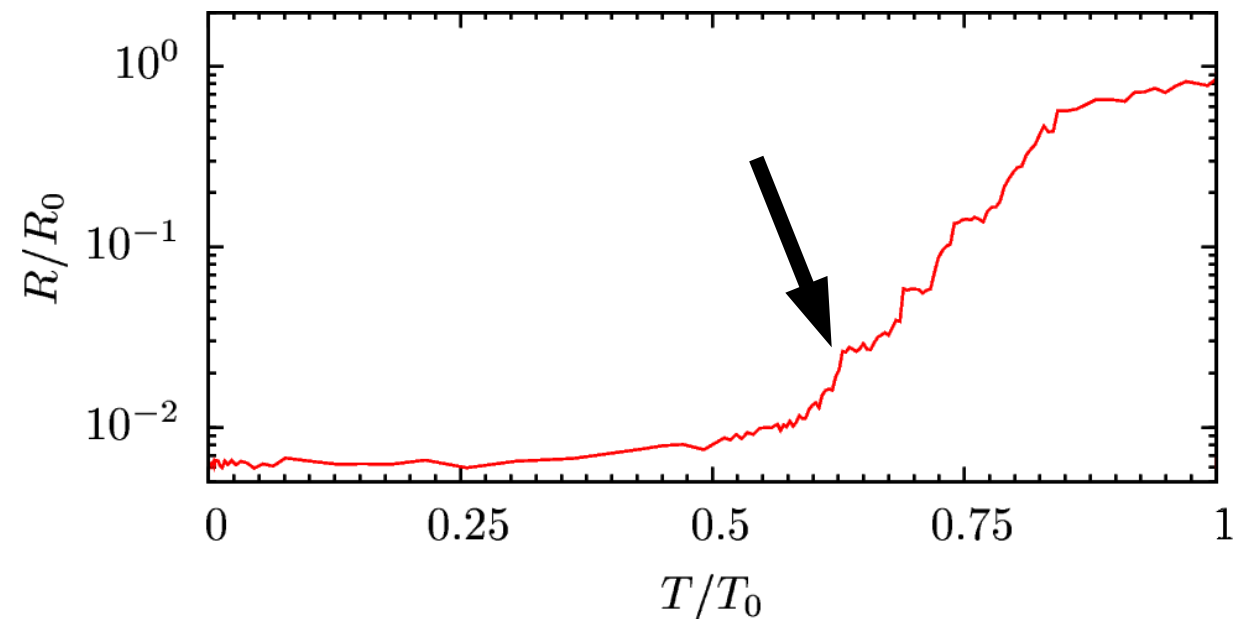
0

$\langle \cos(\theta_1 - \theta_2) \rangle$

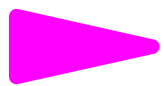
1



Two superconducting regions



Superconducting current

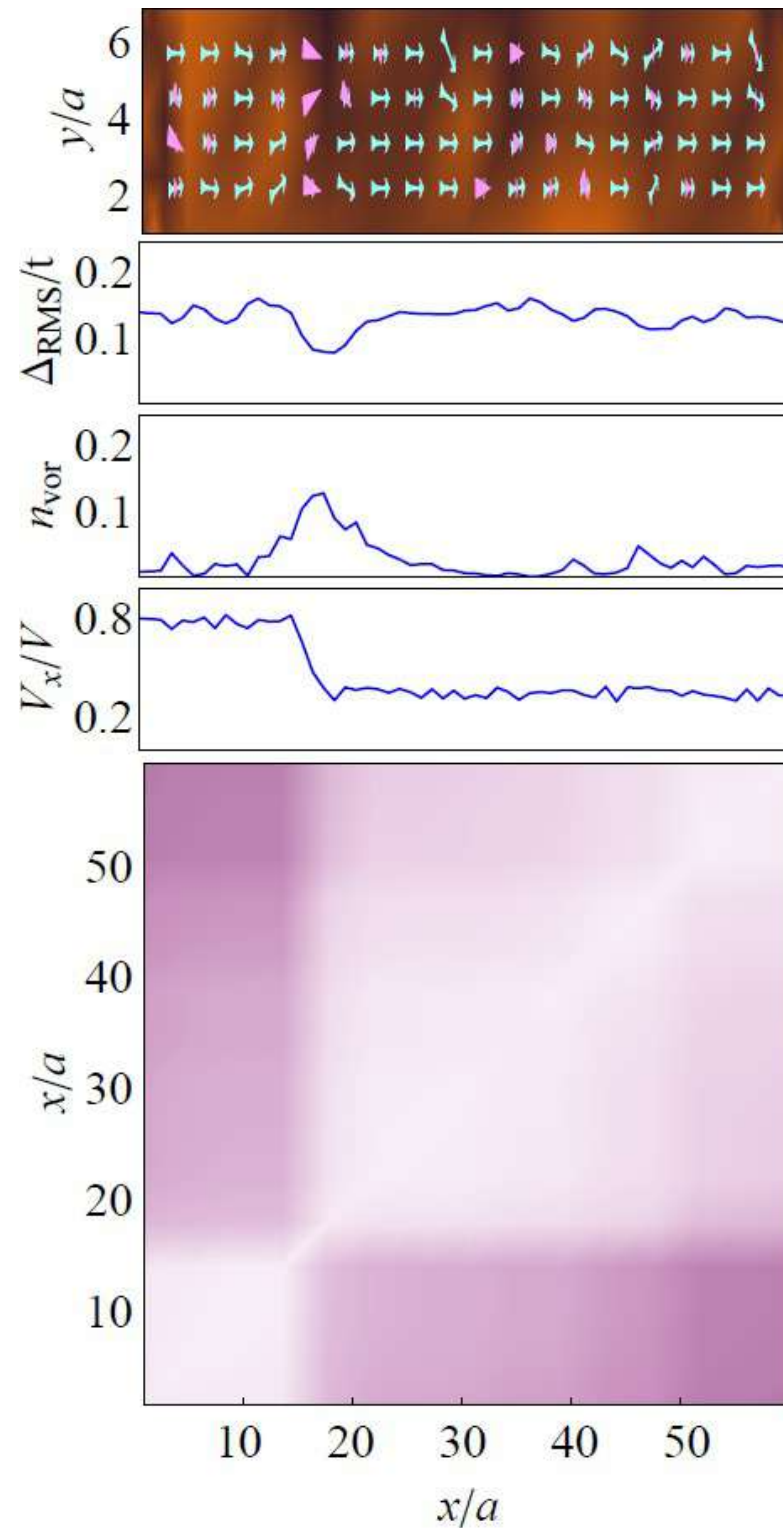


Normal current

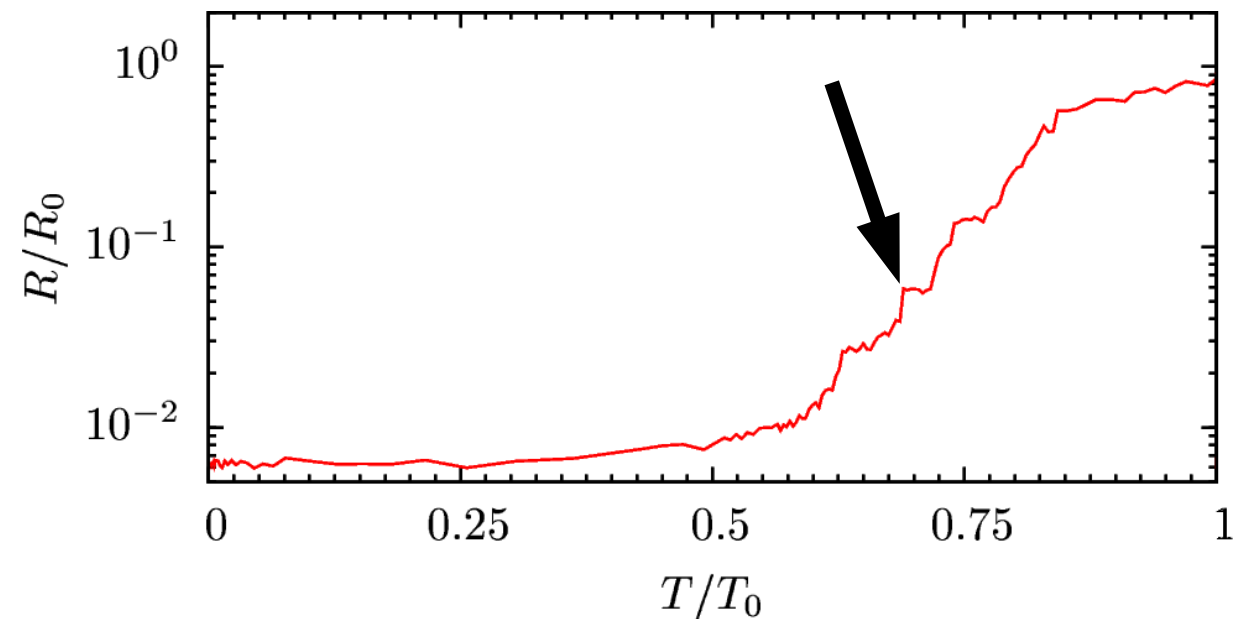
0

$\langle \cos(\theta_1 - \theta_2) \rangle$

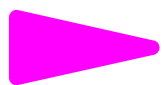
1



Three superconducting regions



Superconducting current

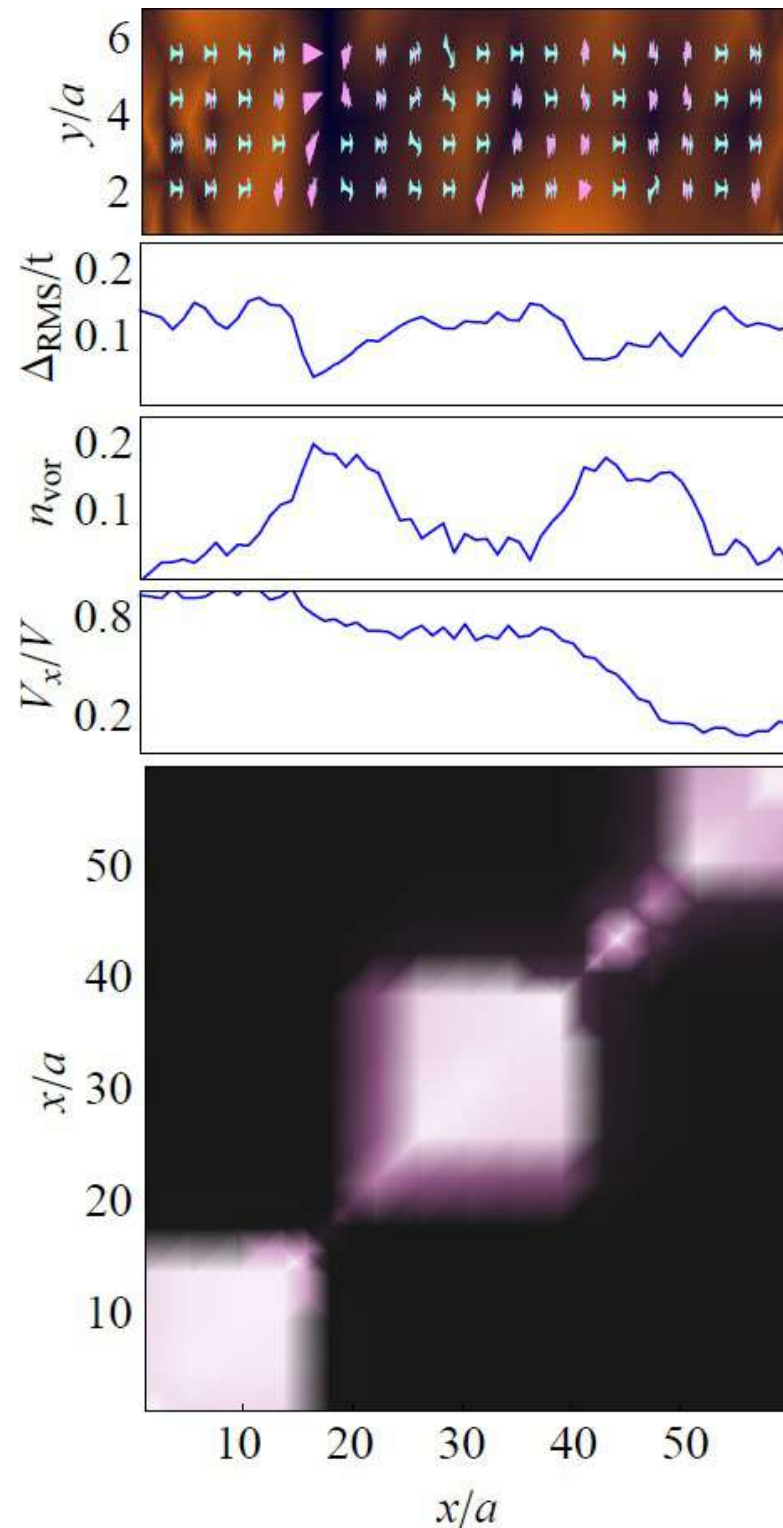


Normal current

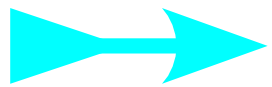
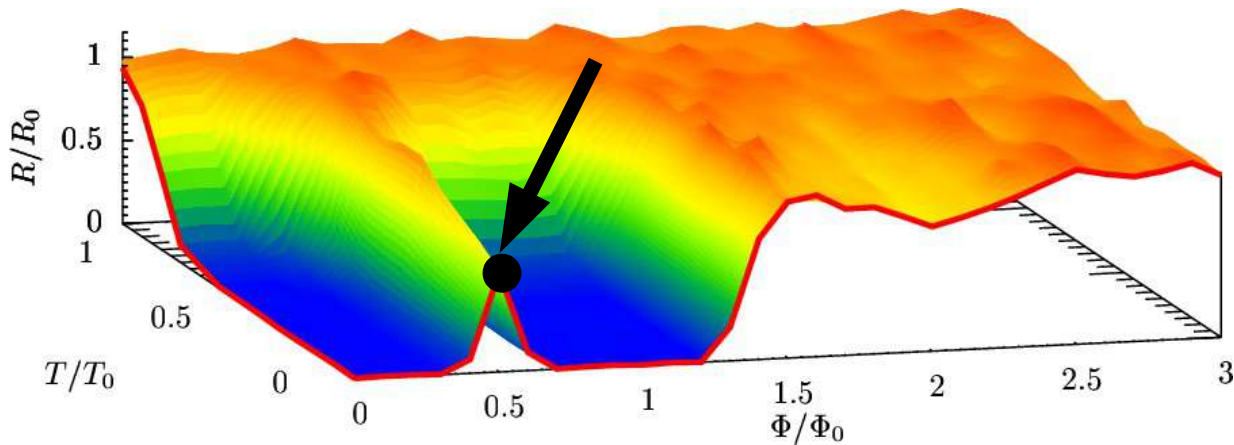
0

$\langle \cos(\theta_1 - \theta_2) \rangle$

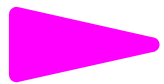
1



Half flux quantum normal state



Superconducting current

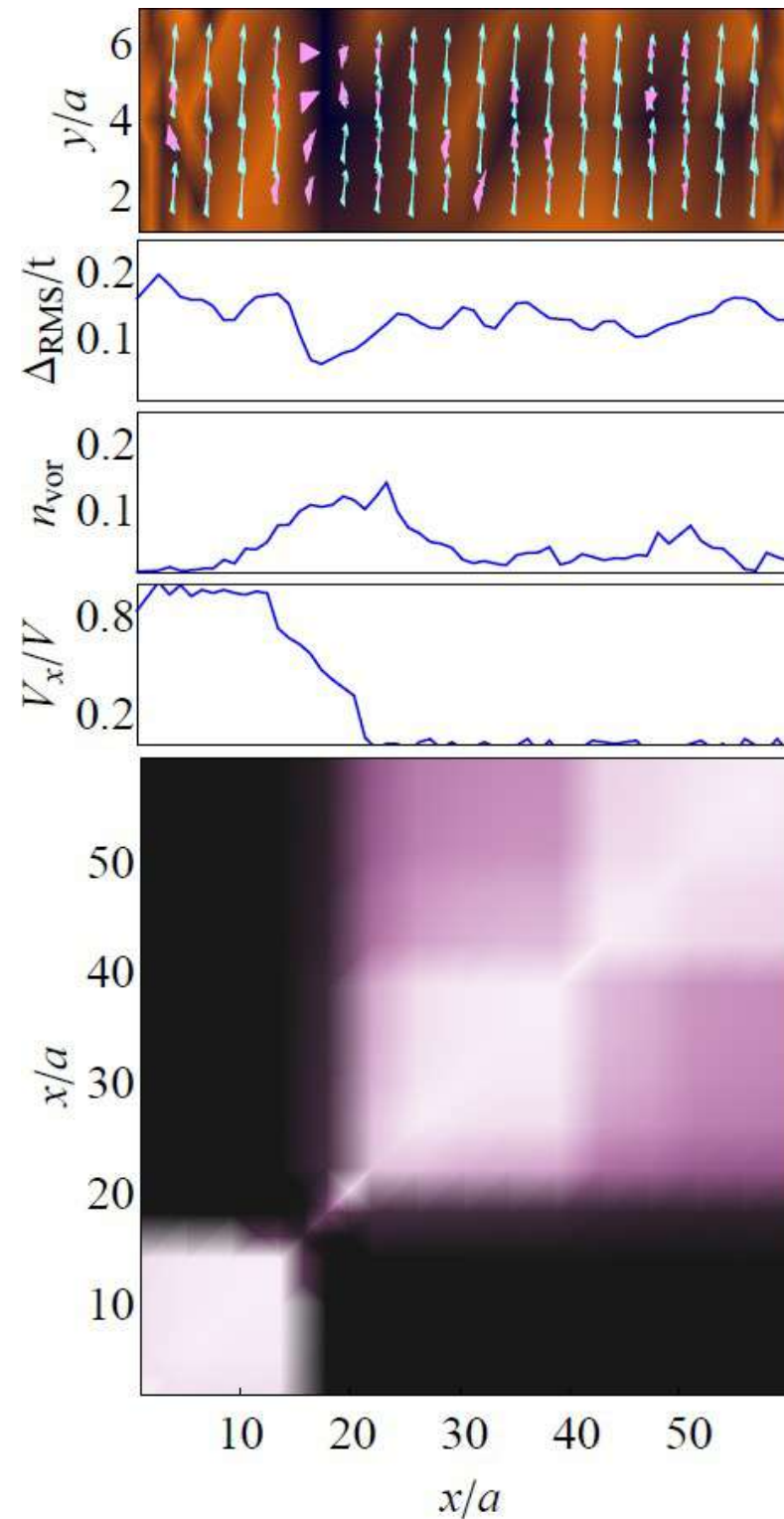


Normal current

0

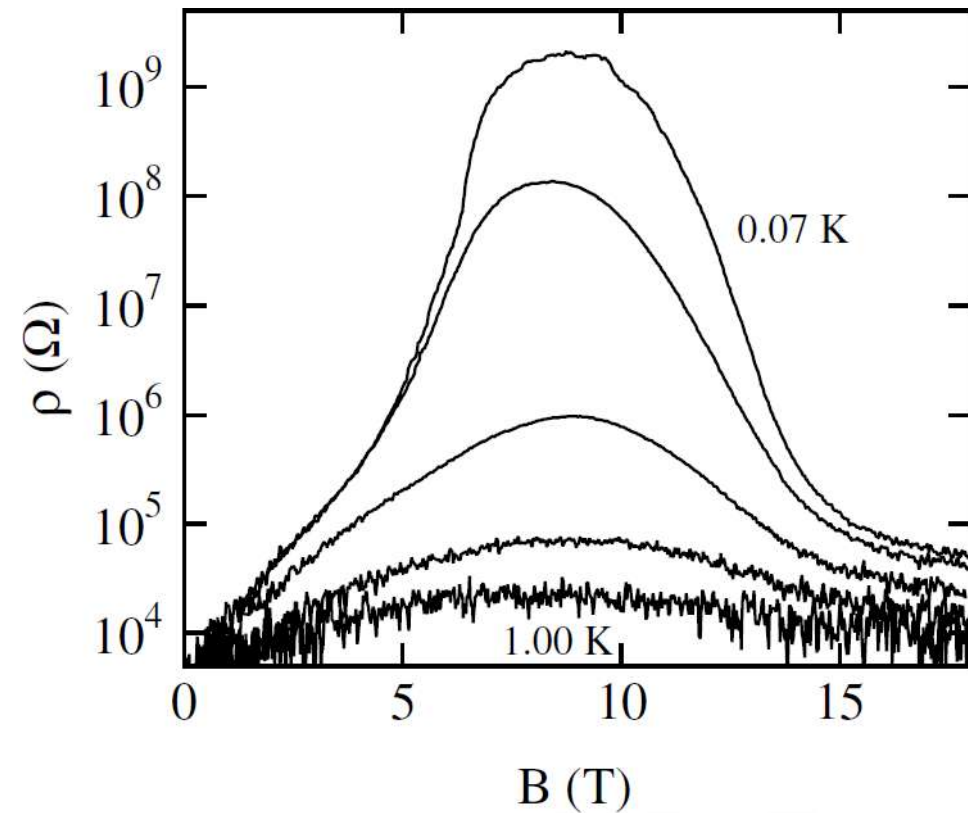
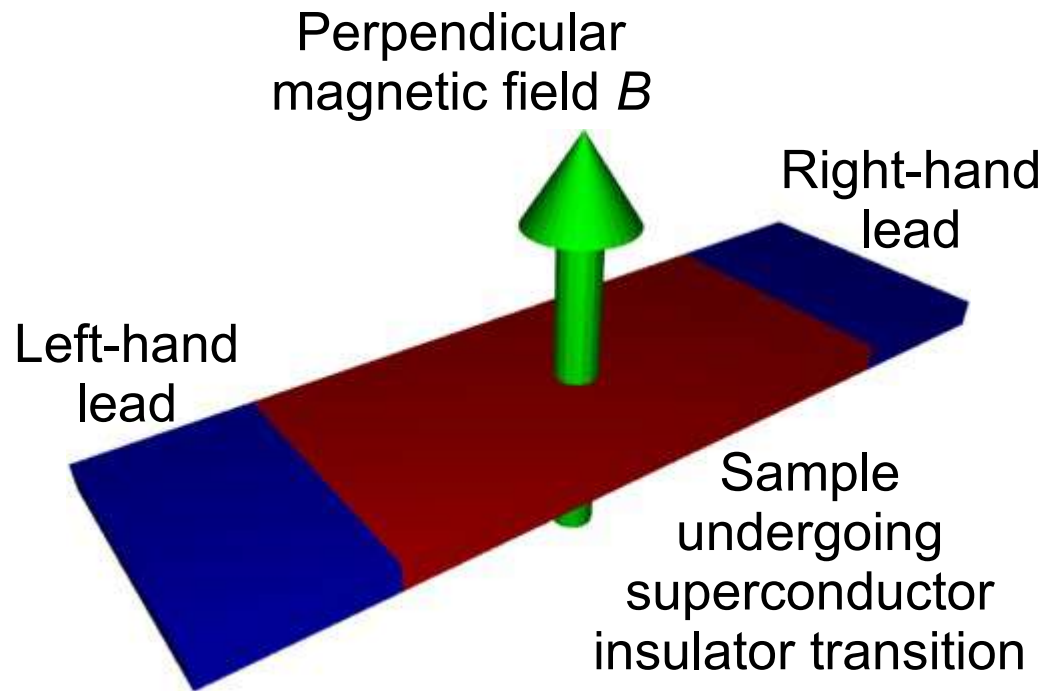
$\langle \cos(\theta_1 - \theta_2) \rangle$

1



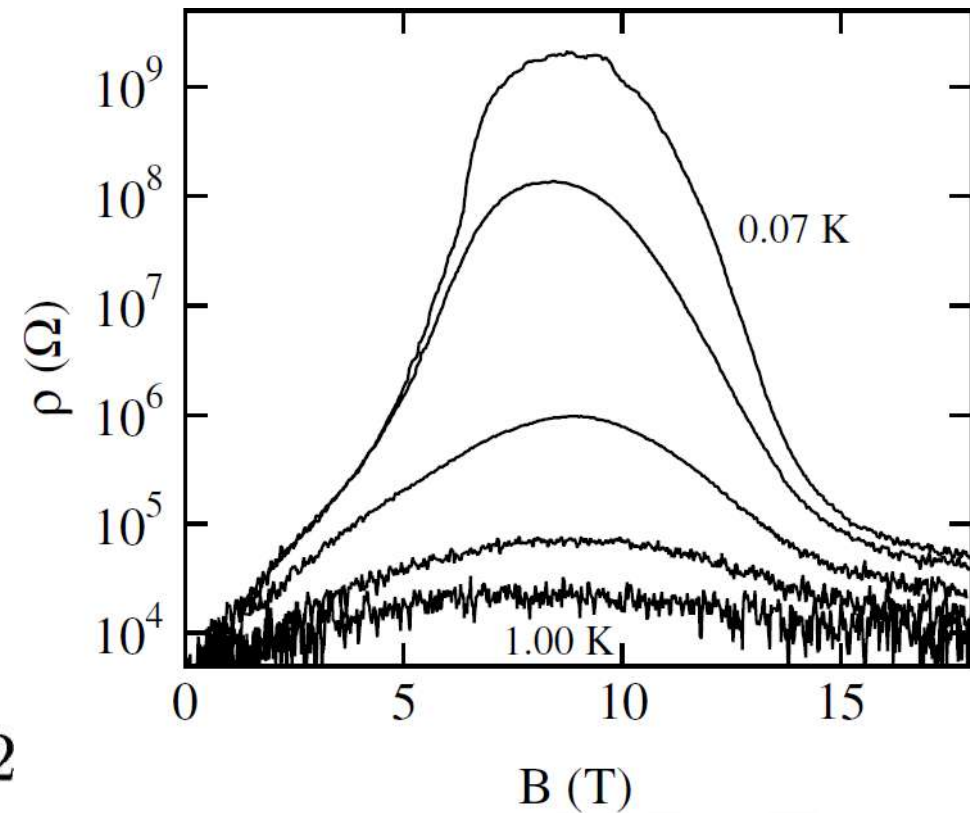
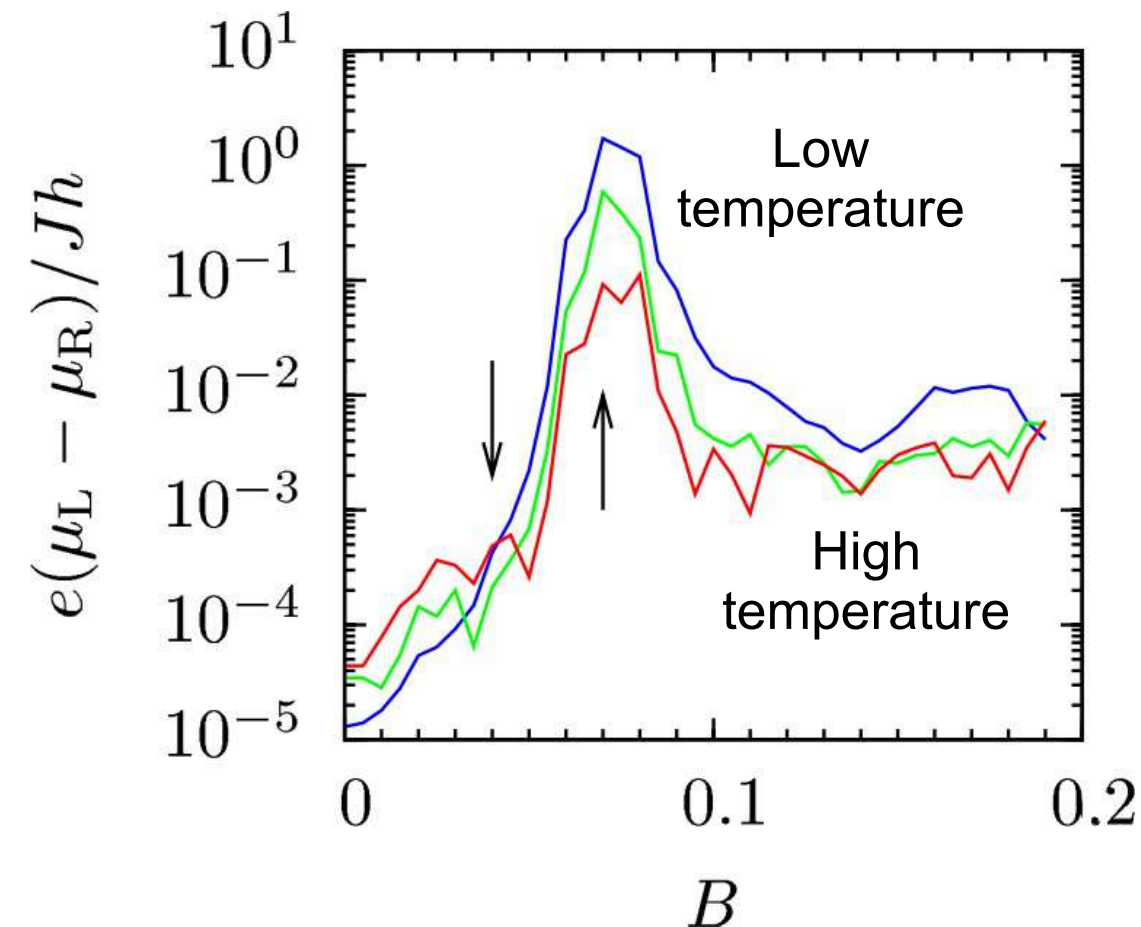
Magnetoresistance peak

- Study superconductor-insulator transition in dirty sample with perpendicular magnetic field



Magnetoresistance peak

- Study superconductor-insulator transition in dirty sample with perpendicular magnetic field

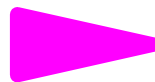


Clues: current maps

- Weak links across superconducting puddles

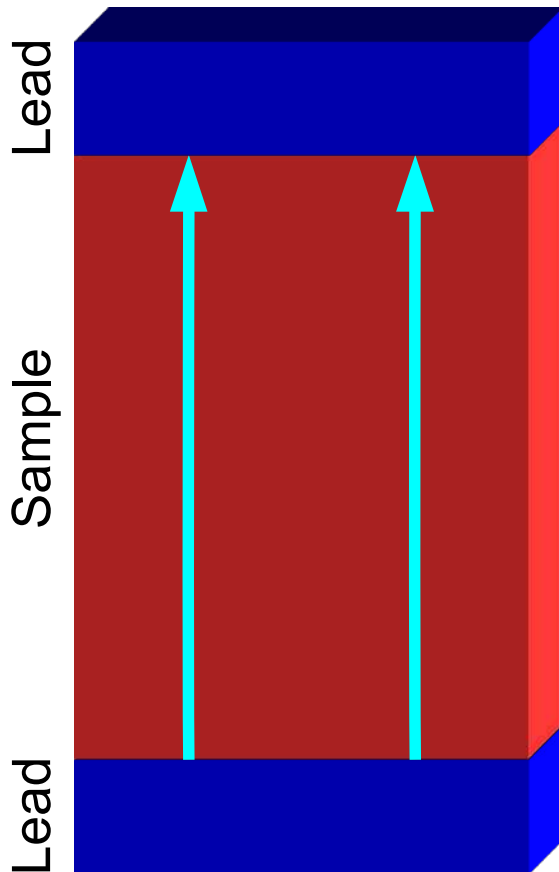


Superconducting current

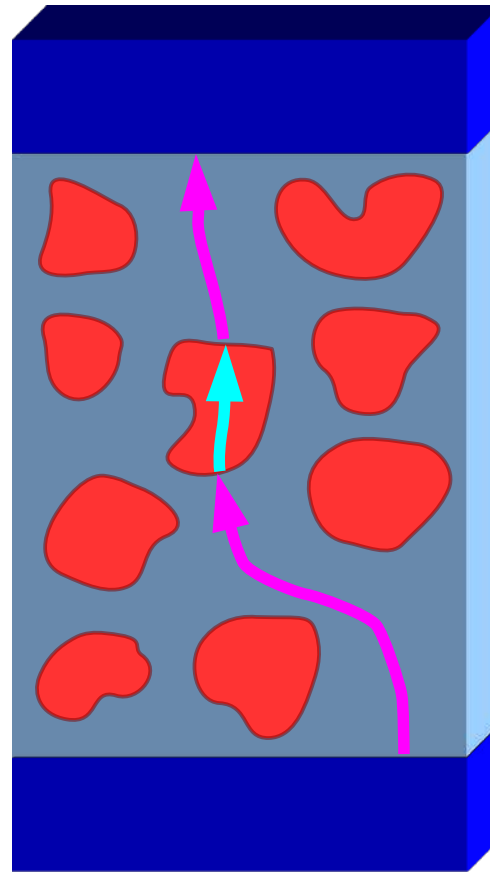


Normal current

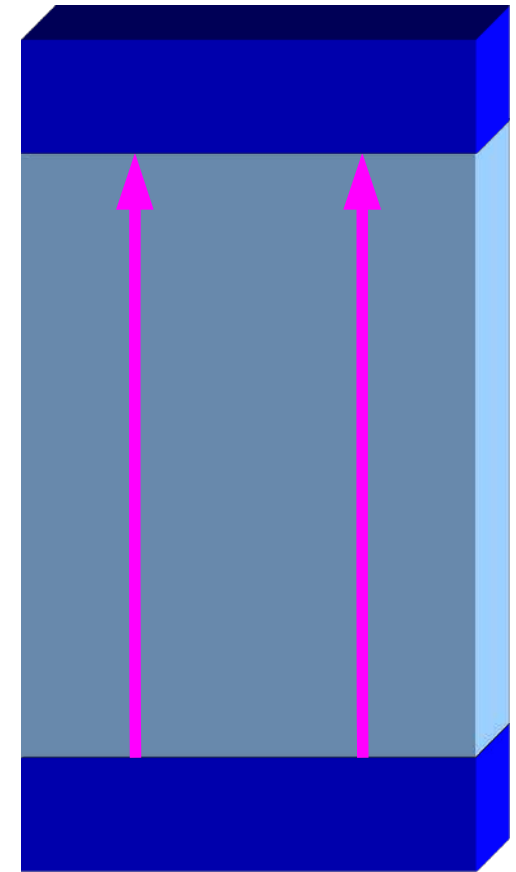
Working hypothesis



Sample entirely superconducting



Superconducting puddles have a charging energy and a tunneling barrier

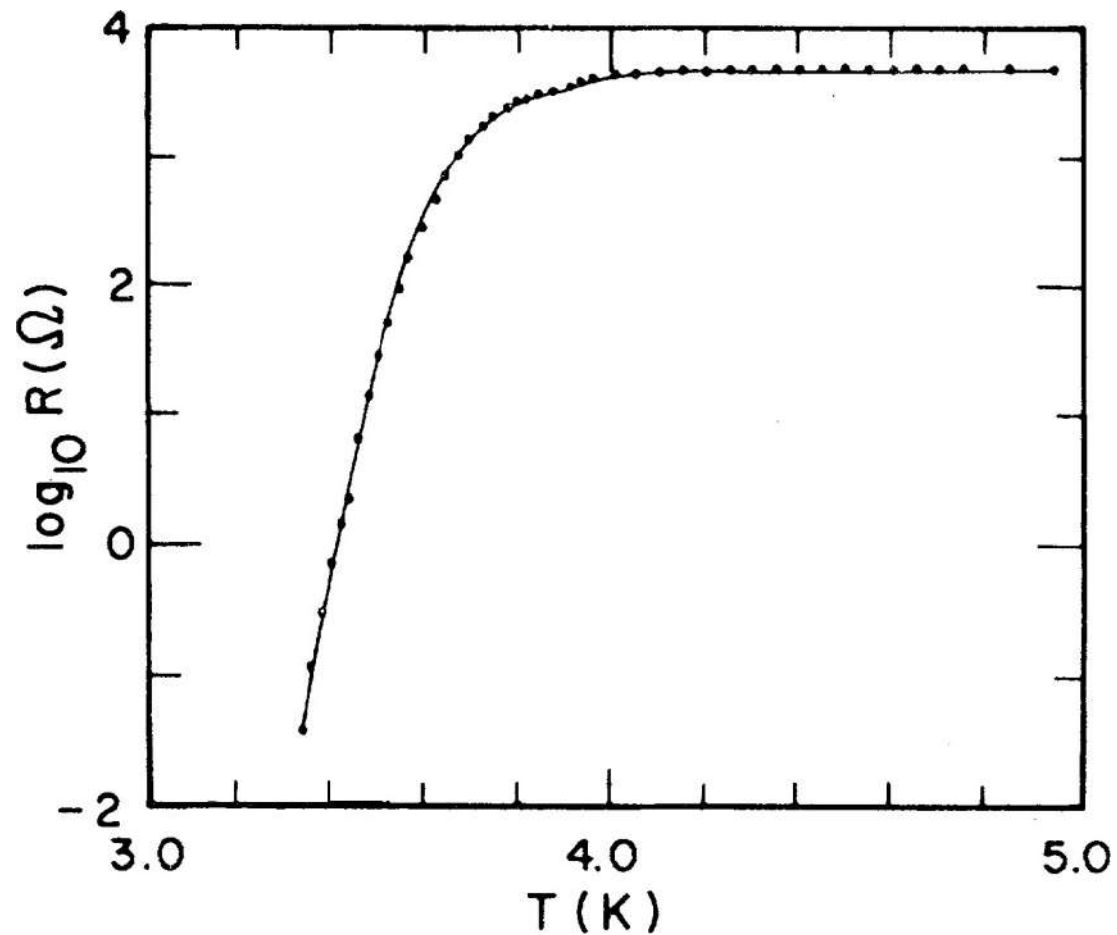
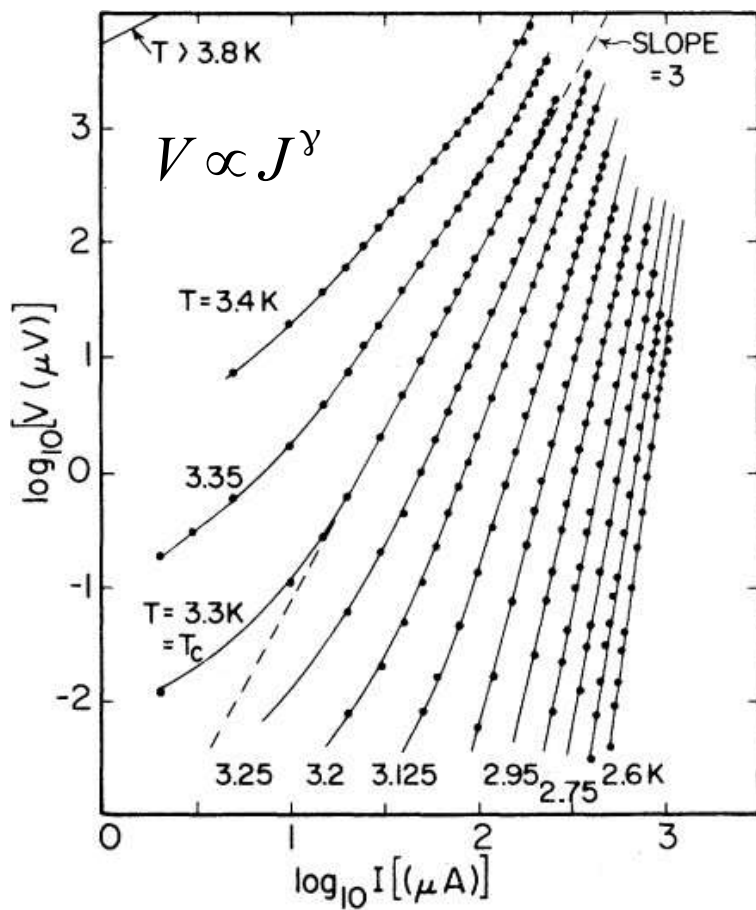


Sample entirely normal

Summary & future prospects

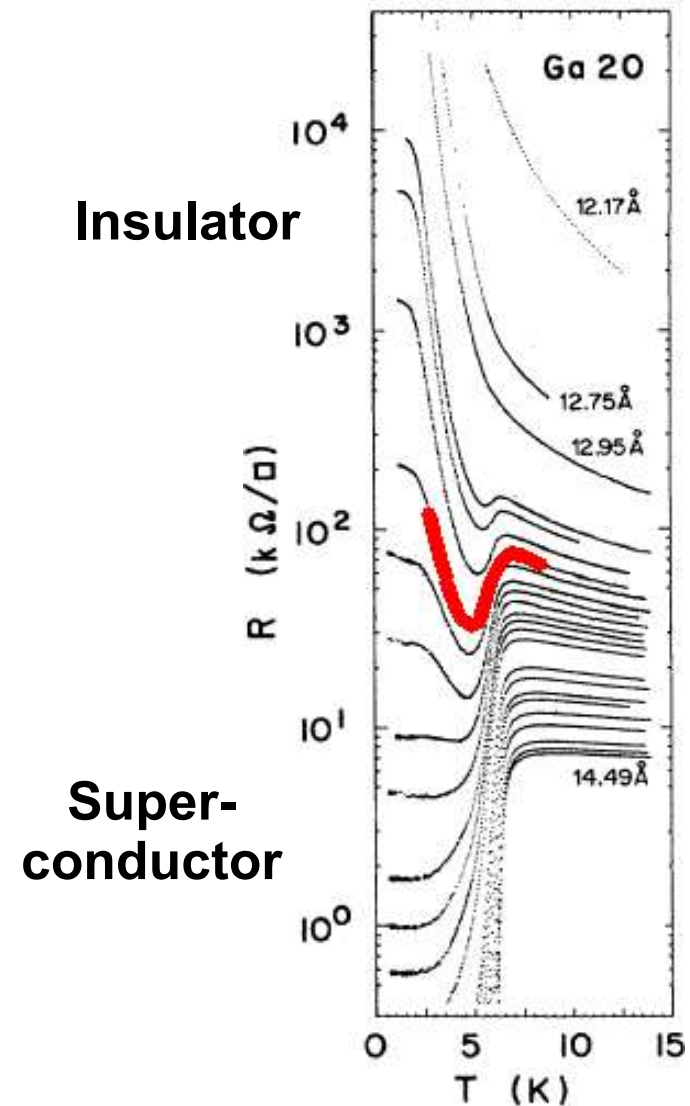
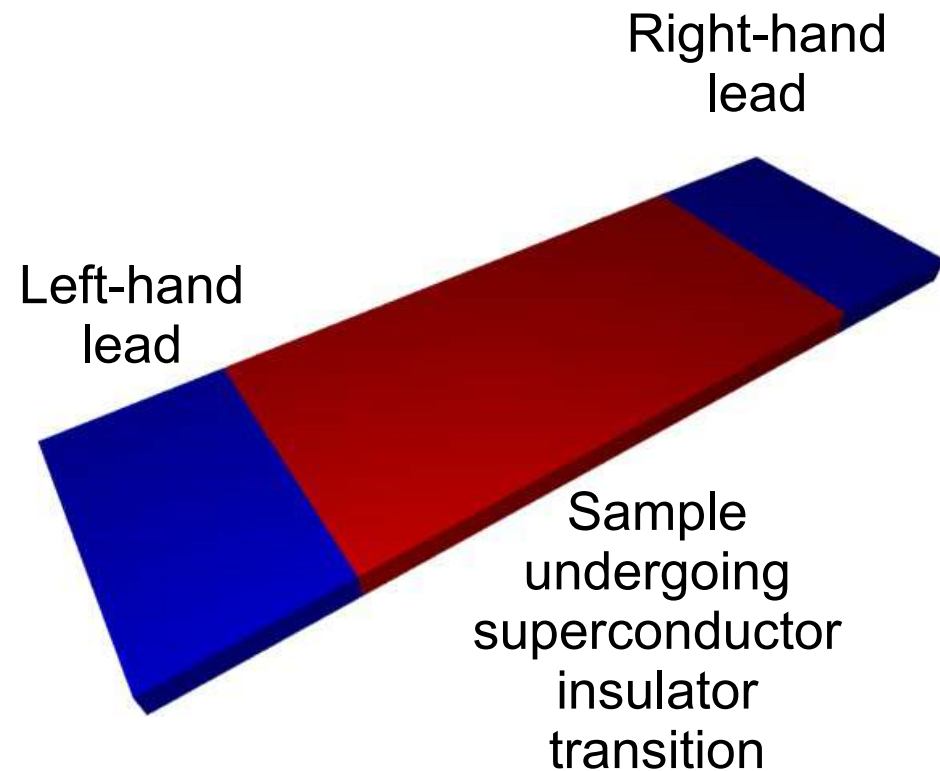
- Developed new formalism that includes thermal phase fluctuations to calculate and probe transport in superconductors
- New numerical techniques permit access to large systems
- Tested formalism against a series of well established results
- Shown that superconductor-insulator transition in small diameter cylinders is driven by phase fluctuations
- Shown that magnetoresistance peak could be driven by condensation of superconducting puddles
- Flexibility allows us to study wide range of unexplained effects

KT transition conductivity



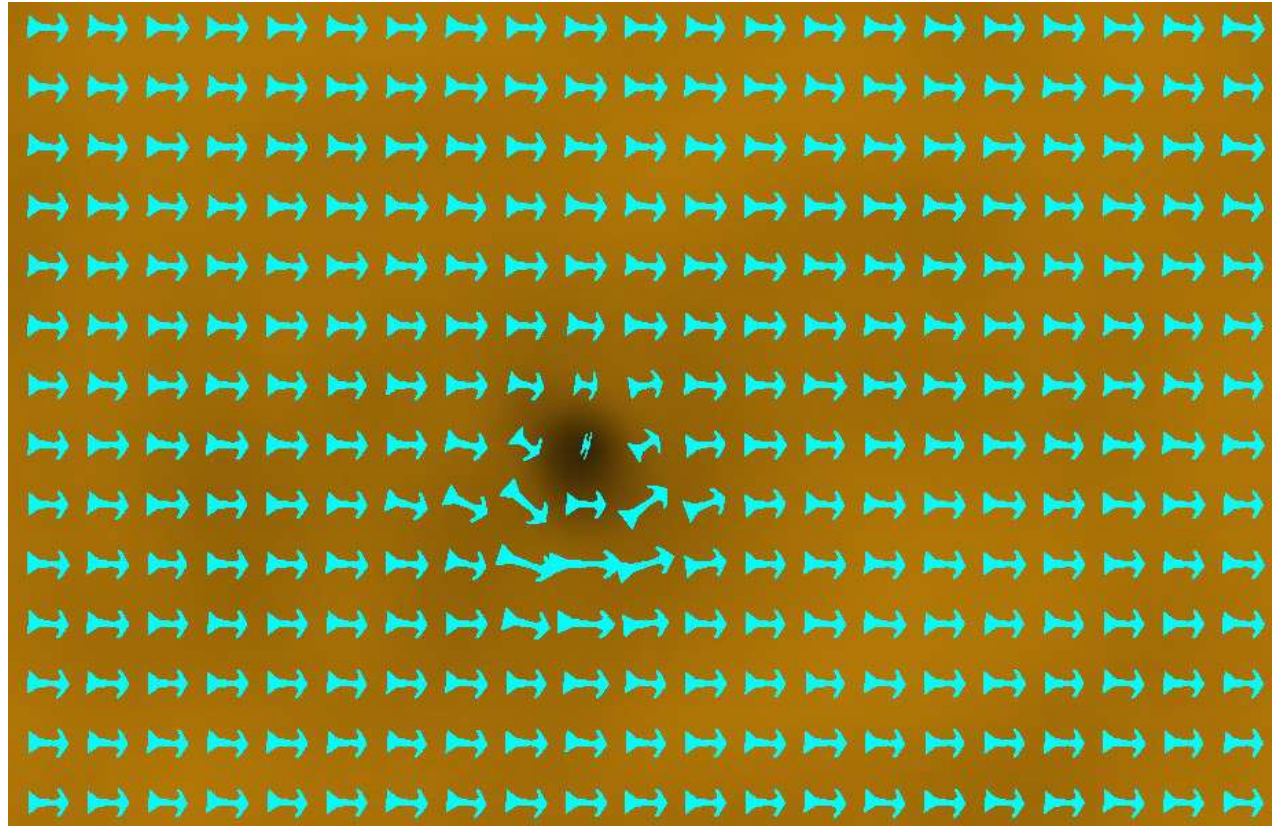
Superconductor-insulator transition

- Non-monotonic R-T curves [Jaeger 89, Baturina 07]



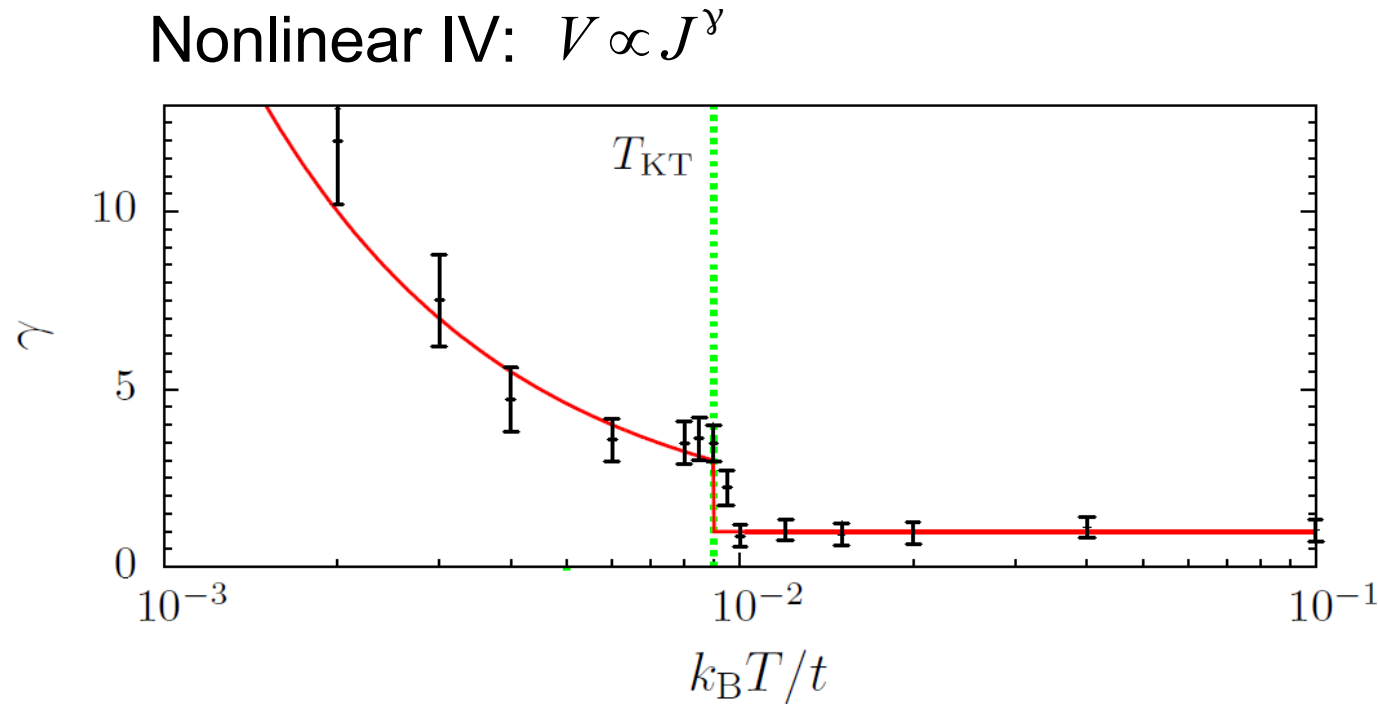
Verification

- Resistivity at the Kosterlitz-Thouless transition
- Nonlinear I/V characteristics
- Length dependence of conductivity
- Andreev reflection
- Josephson junction
- Little-Parks effect in large diameter cylinder



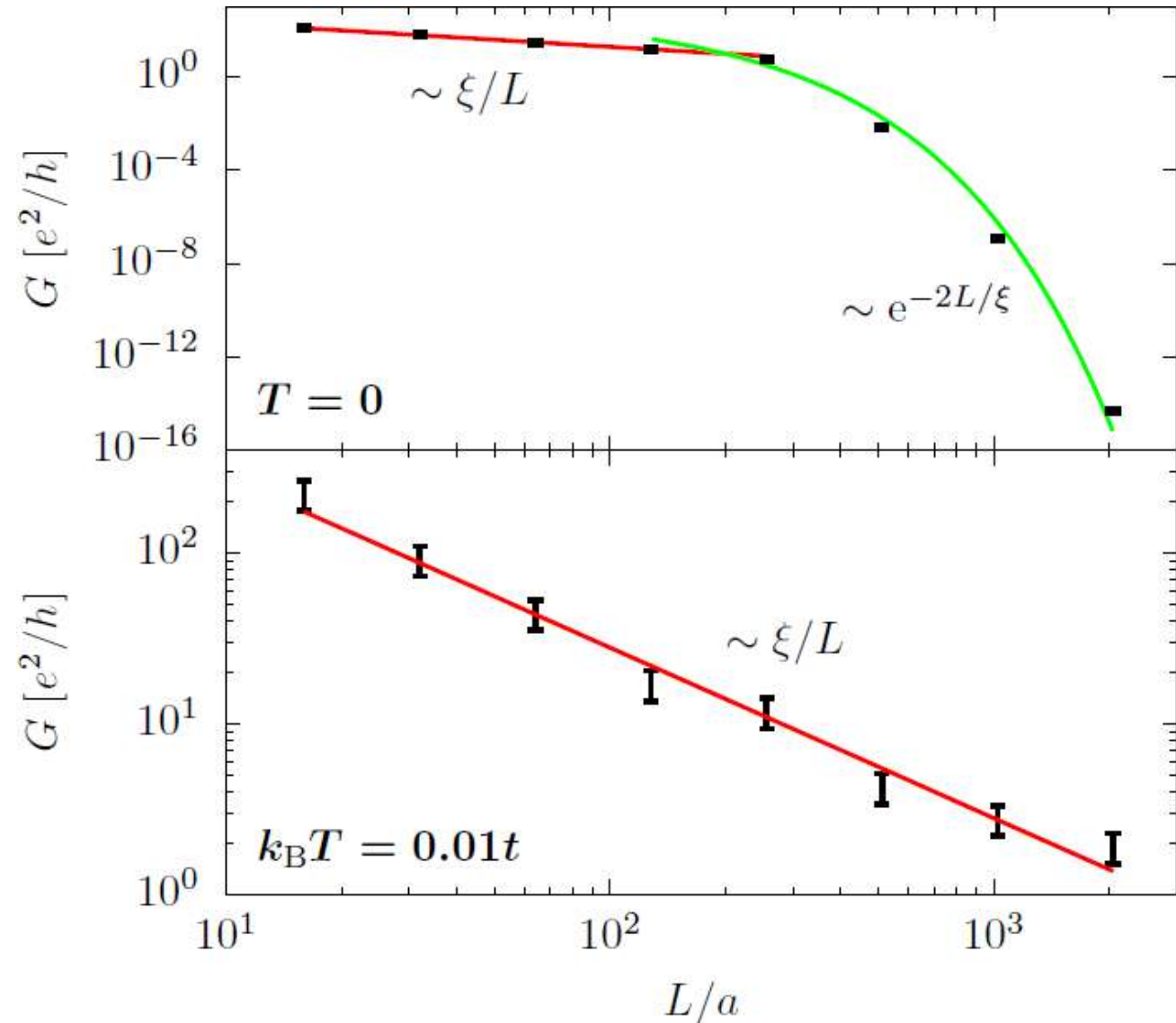
Verification

- Resistivity at the Kosterlitz-Thouless transition
- Nonlinear I/V characteristics
- Length dependence of conductivity
- Andreev reflection
- Josephson junction
- Little-Parks effect in large diameter cylinder



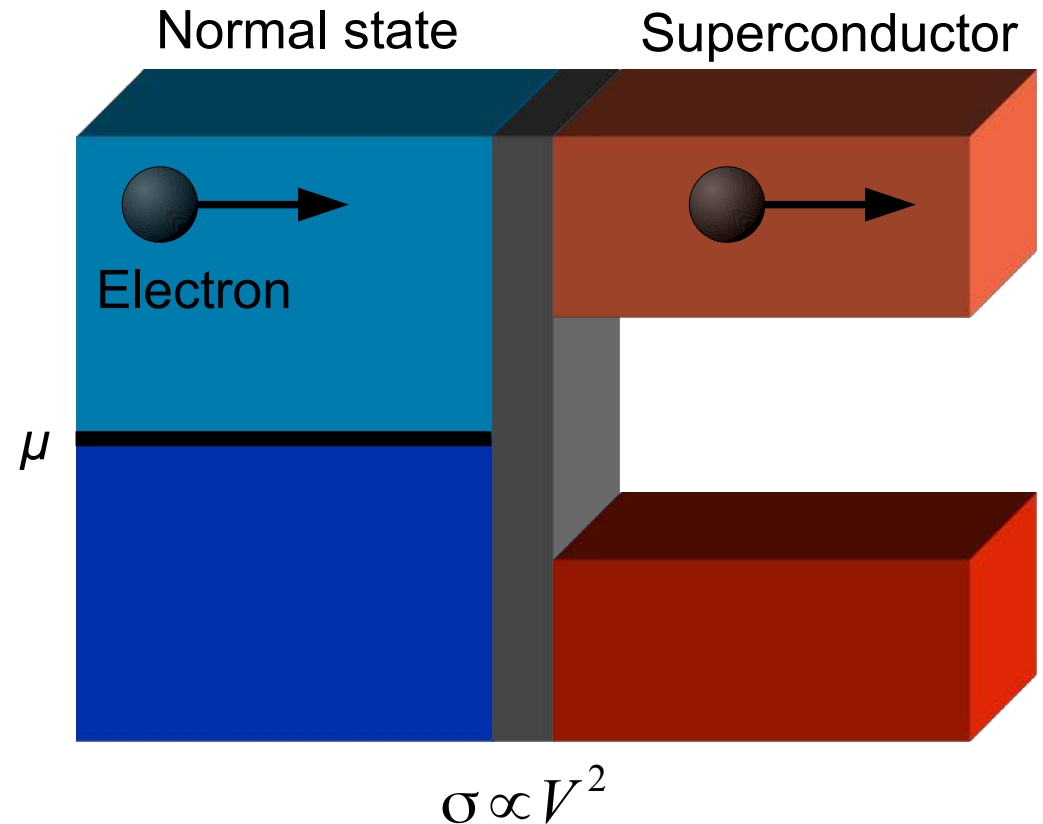
Verification

- Resistivity at the Kosterlitz-Thouless transition
- Nonlinear I/V characteristics
- Length dependence of conductivity
- Andreev reflection
- Josephson junction
- Little-Parks effect in large diameter cylinder



Verification

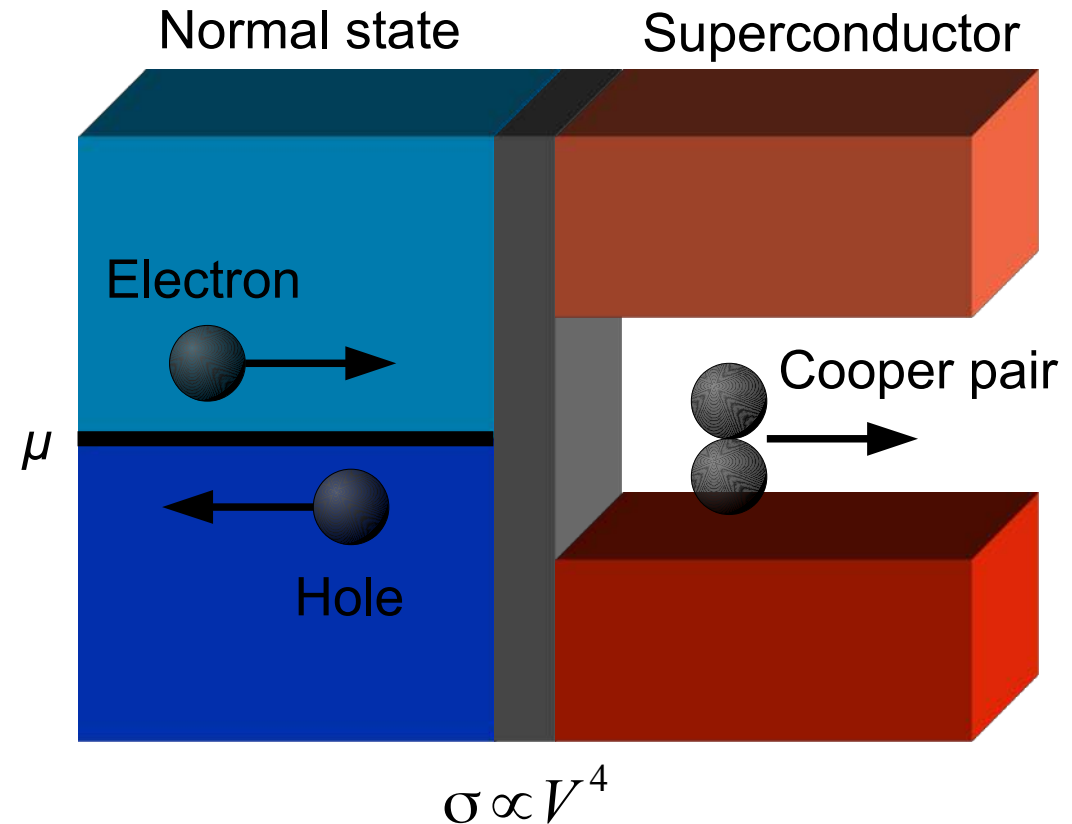
- Resistivity at the Kosterlitz-Thouless transition
- Nonlinear I/V characteristics
- Length dependence of conductivity
- **Andreev reflection**
- Josephson junction
- Little-Parks effect in large diameter cylinder



Andreev, JETP **19**, 1228 (1964)

Verification

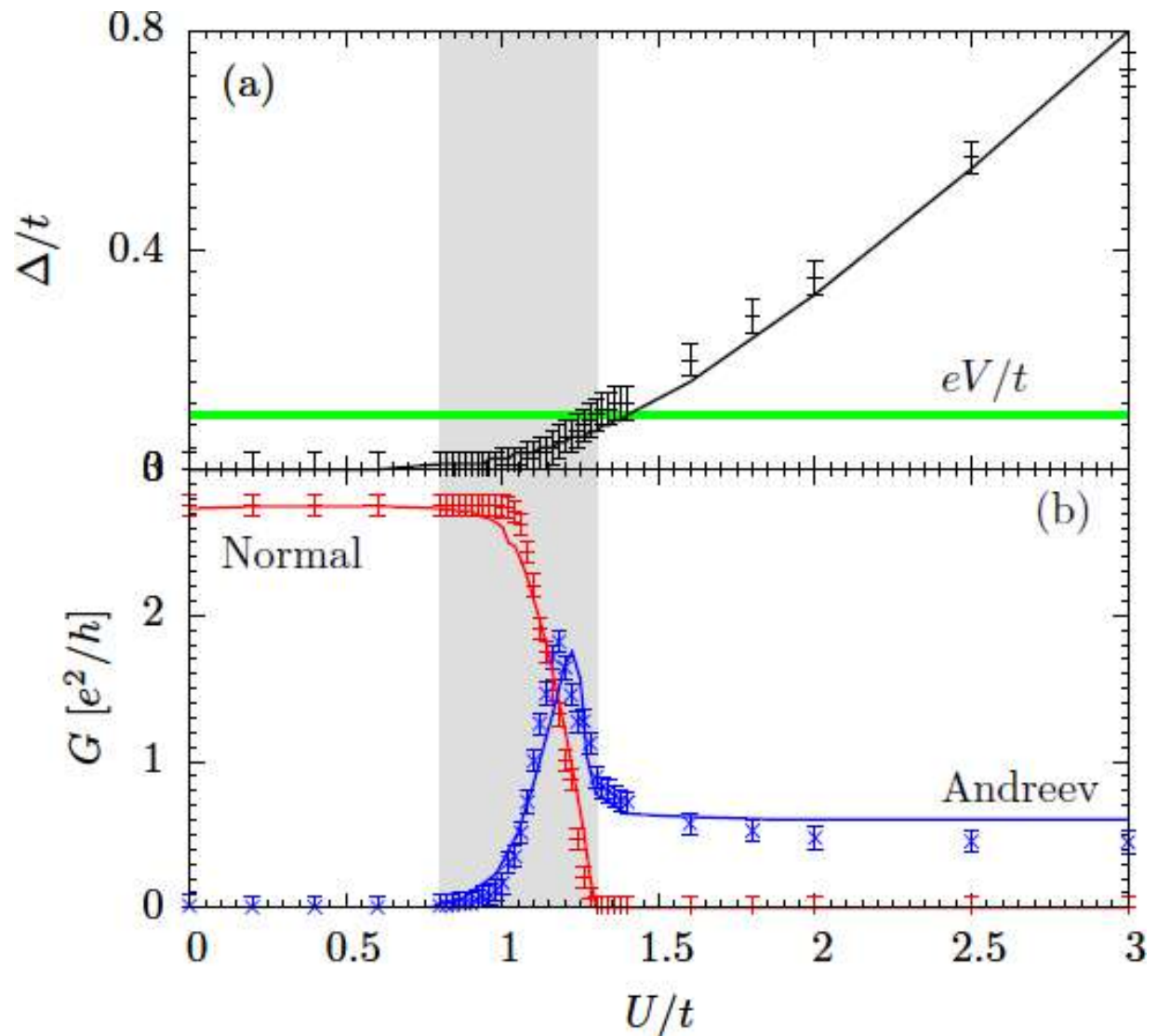
- Resistivity at the Kosterlitz-Thouless transition
- Nonlinear I/V characteristics
- Length dependence of conductivity
- **Andreev reflection**
- Josephson junction
- Little-Parks effect in large diameter cylinder



Andreev, JETP **19**, 1228 (1964)

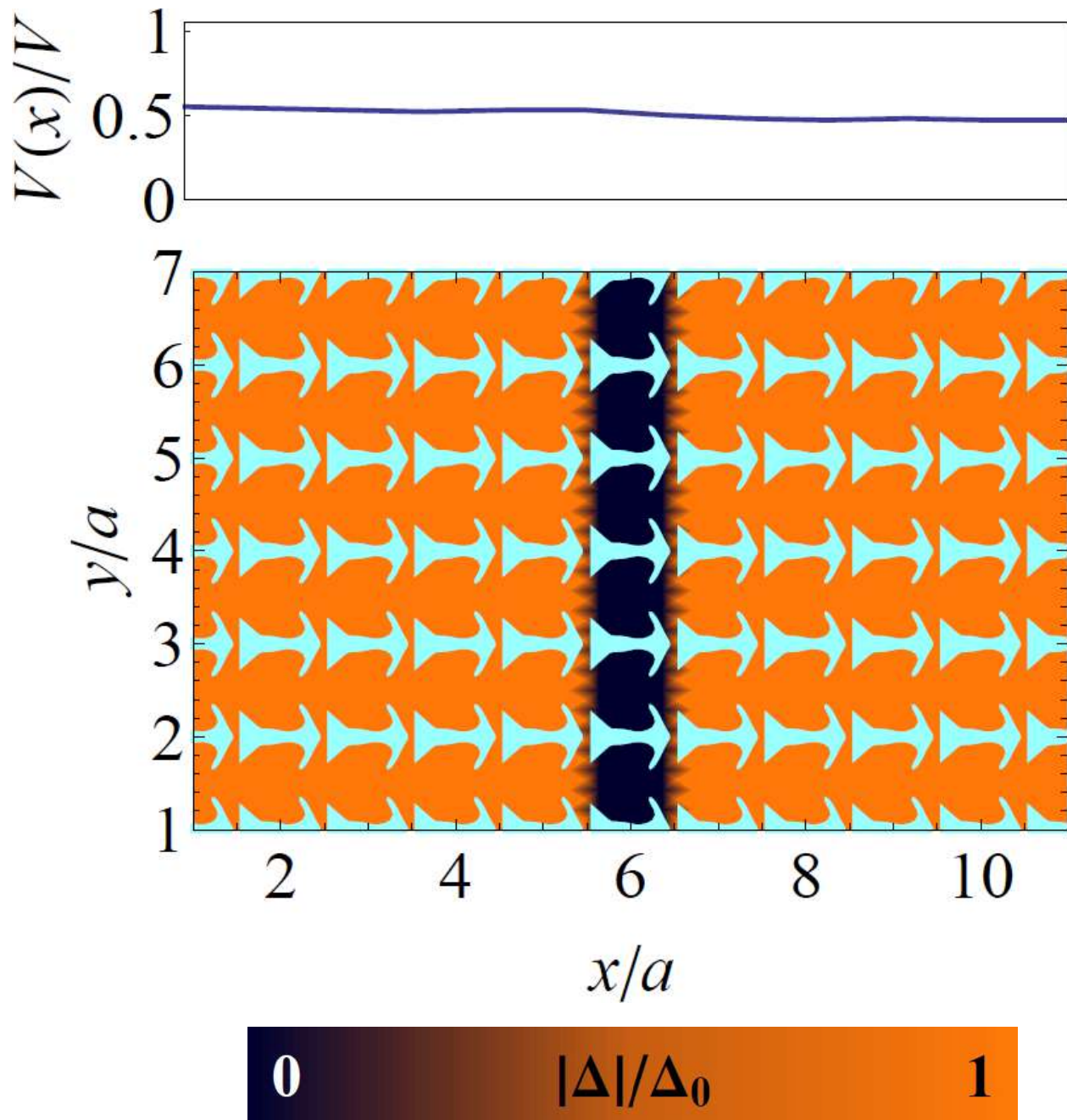
Verification

- Resistivity at the Kosterlitz-Thouless transition
- Nonlinear I/V characteristics
- Length dependence of conductivity
- Andreev reflection
- Josephson junction
- Little-Parks effect in large diameter cylinder



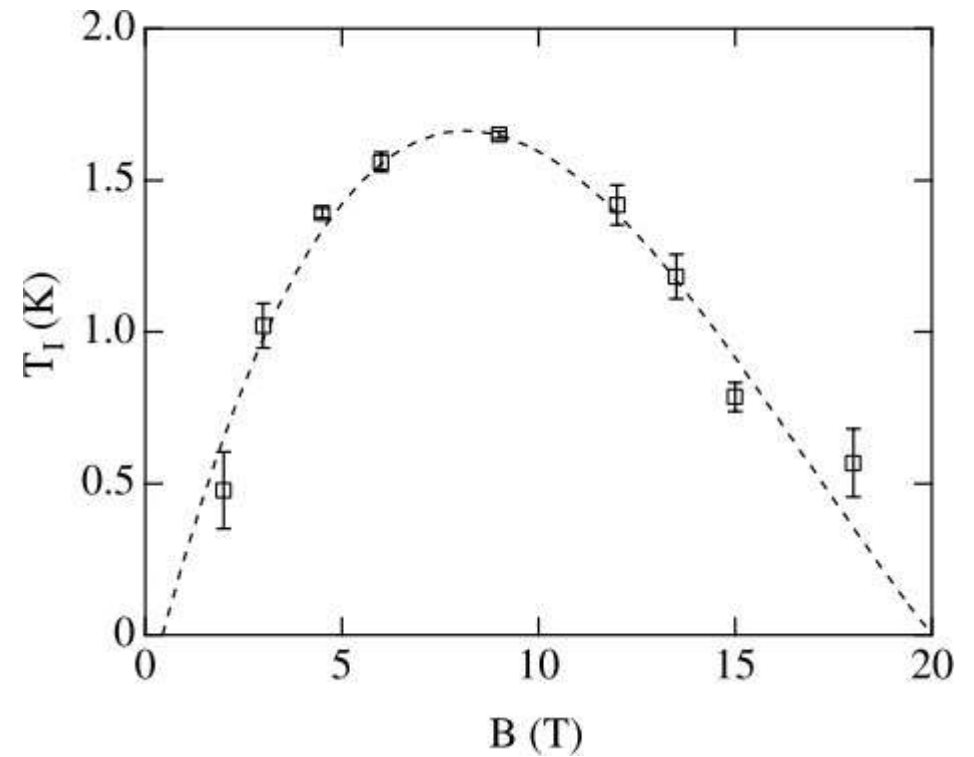
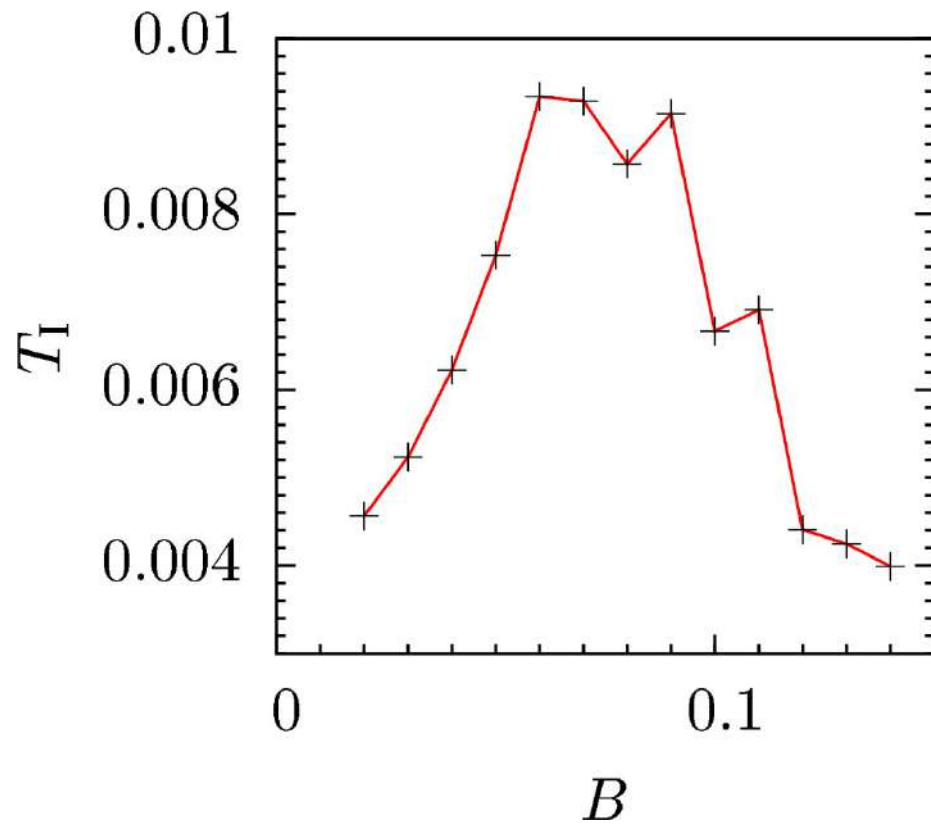
Verification

- Resistivity at the Kosterlitz-Thouless transition
- Nonlinear I/V characteristics
- Length dependence of conductivity
- Andreev reflection
- Josephson junction
- Little-Parks effect in large diameter cylinder



Clues: activated transport

- Activated transport $\rho = \rho_0 e^{T_1/T}$



Model one-dimensional systems

