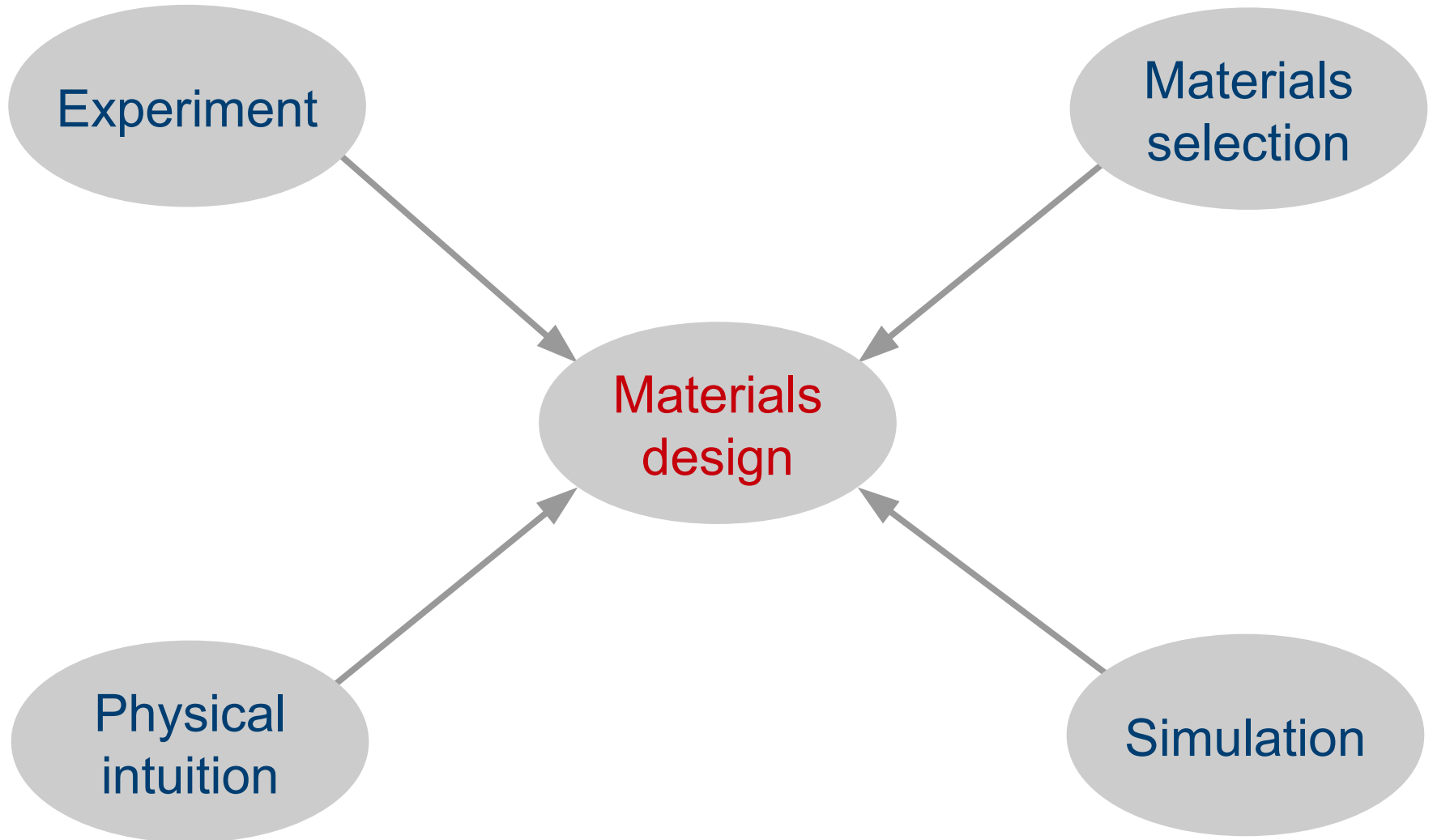


Materials discovery with artificial intelligence

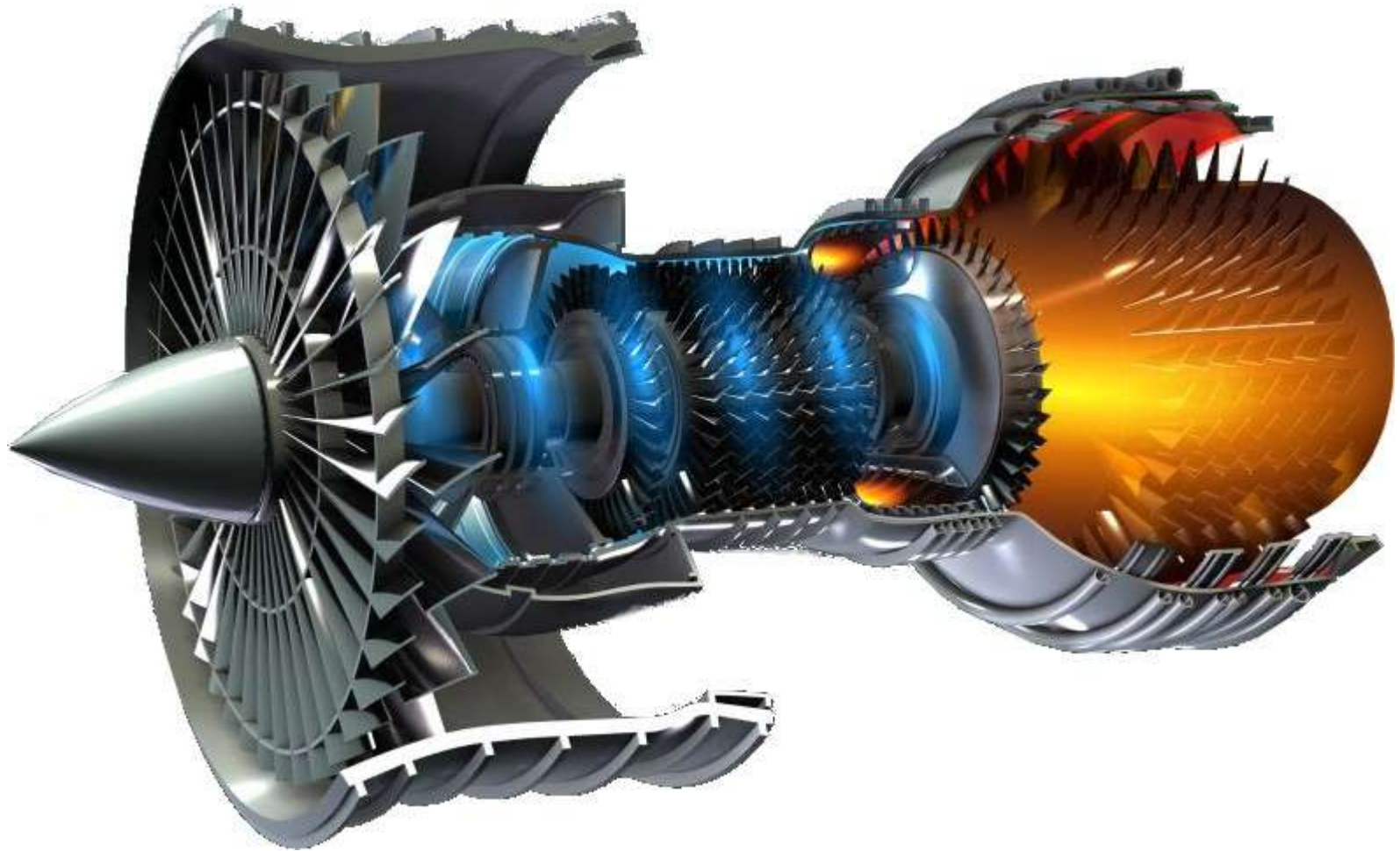
Gareth Conduit

TCM Group, Department of Physics

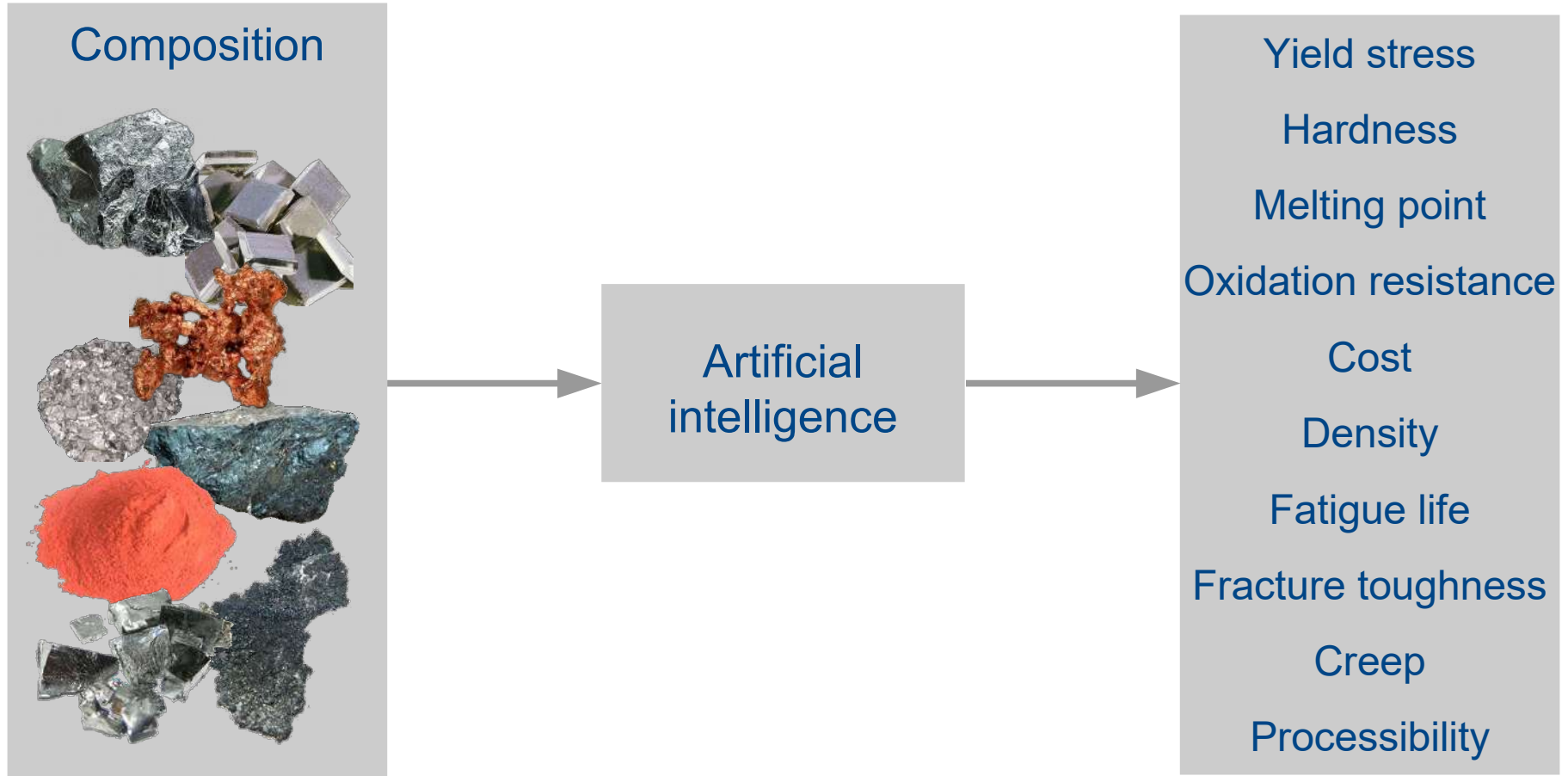
Using data to design materials



Schematic of a jet engine



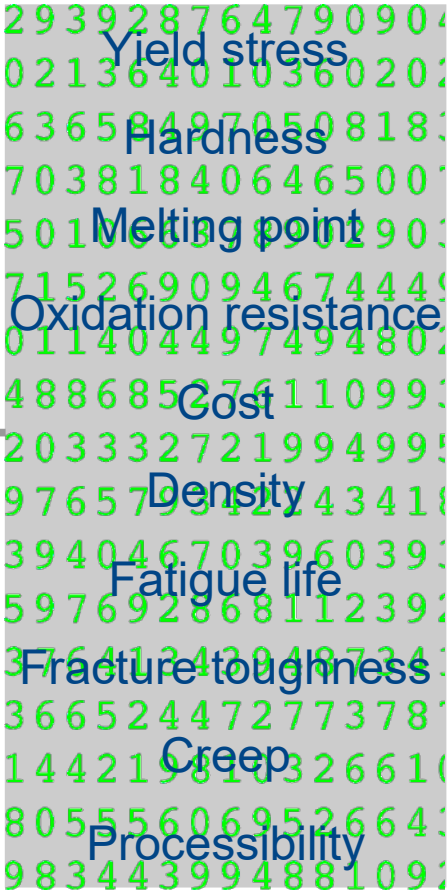
Artificial intelligence



Artificial intelligence

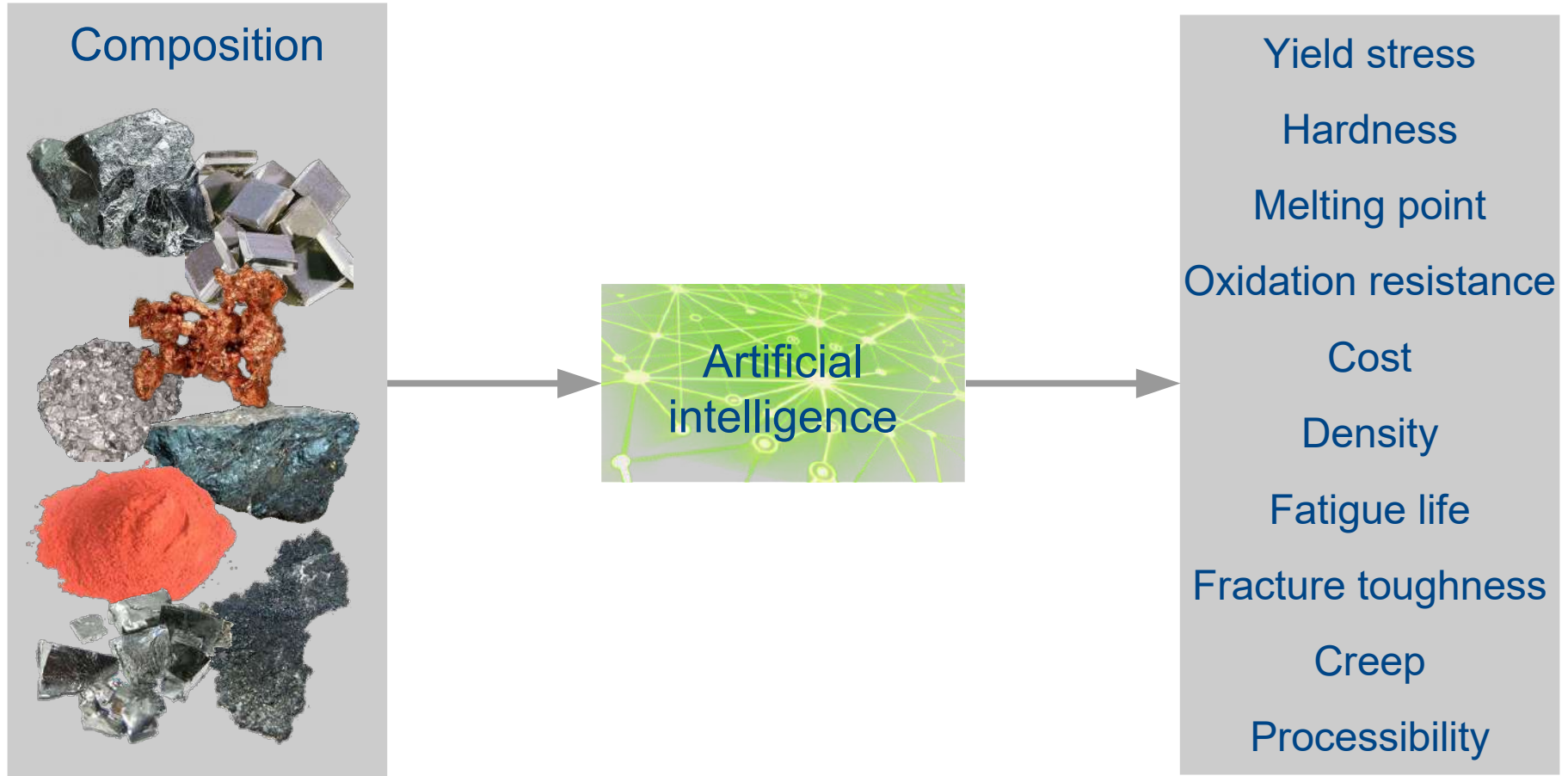


Artificial intelligence

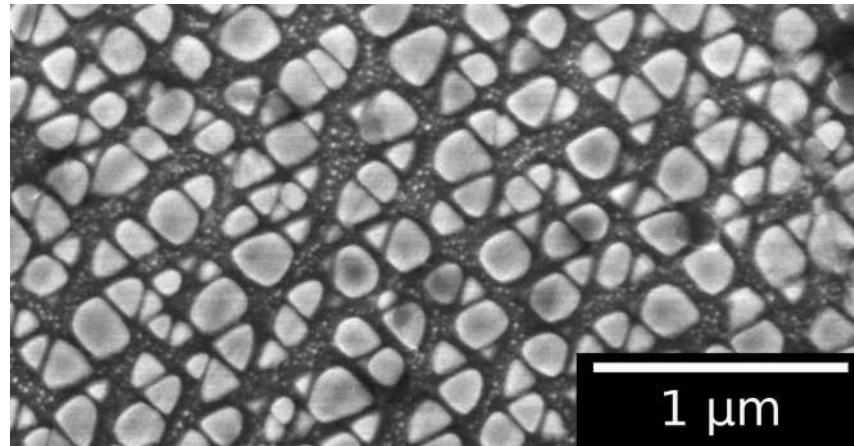


293928764790904	Yield stress
021364010360202	Hardness
636584970508183	Melting point
703818406465007	Oxidation resistance
50106030901903	Cost
715269094674449	Density
011404497494802	Fatigue life
488685276110993	Fracture toughness
203332721994995	Creep
976579312243418	Processability
394046703960393	
597692868112392	
376412439487341	
366524472773787	
144219810326610	
805556069526643	
983443994881092	

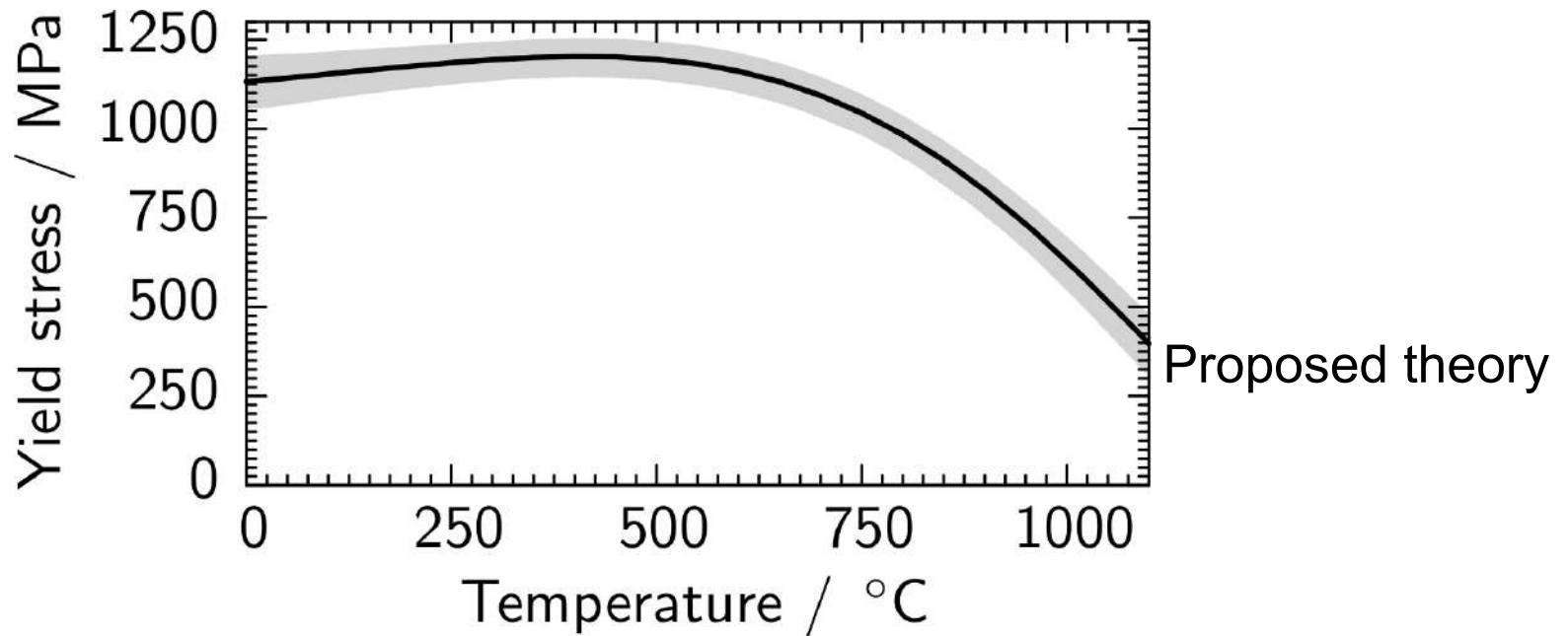
Artificial intelligence



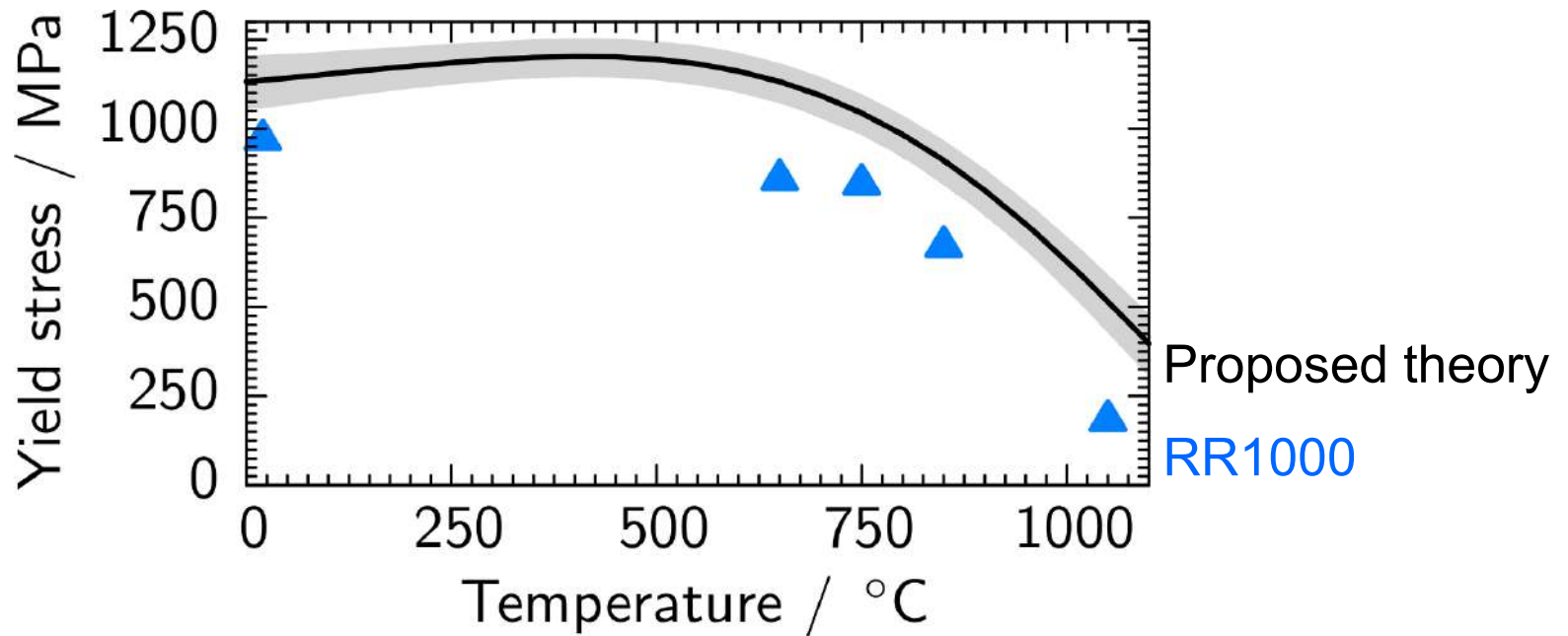
Microstructure



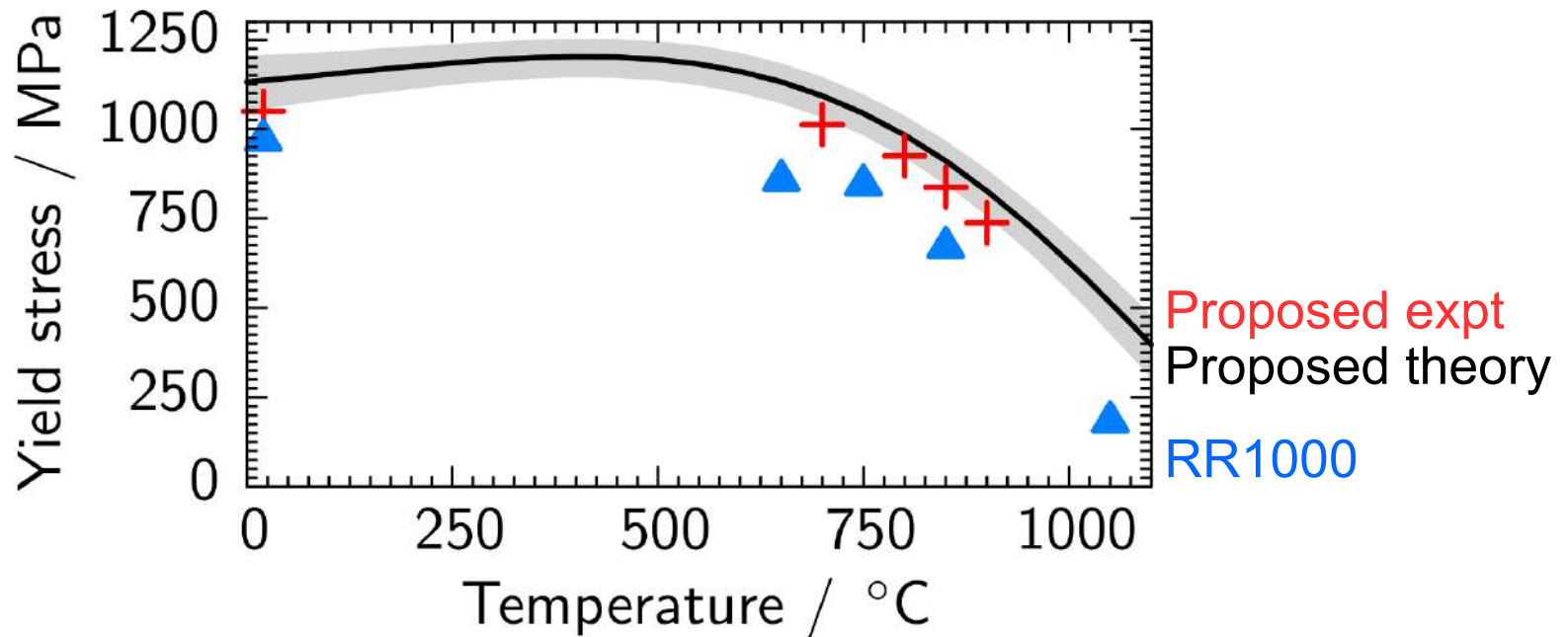
Testing the yield stress



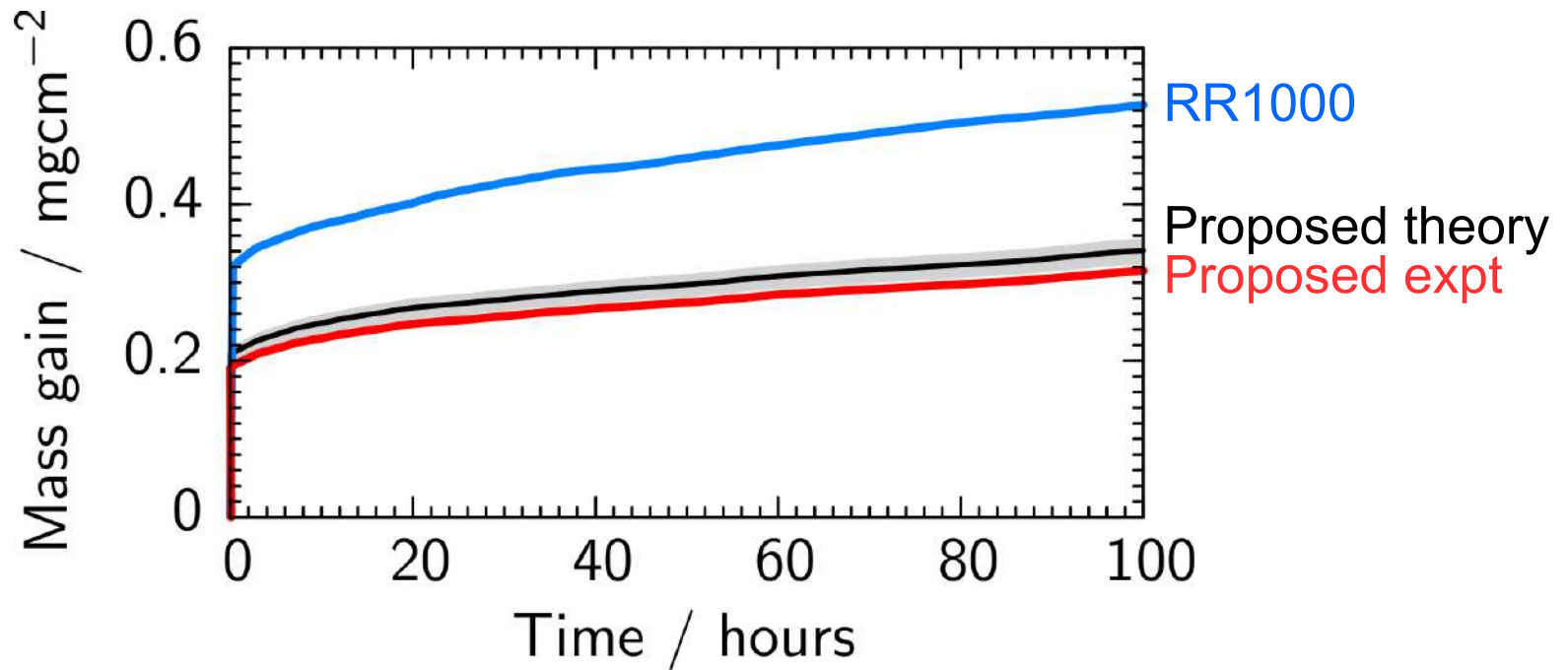
Testing the yield stress



Testing the yield stress



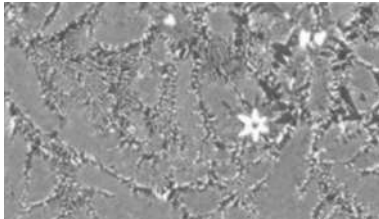
Testing the oxidation resistance



Alloys discovered

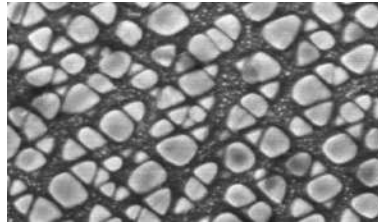
Cr-Cr₂Ta alloys

Intermetallics, 48, 62



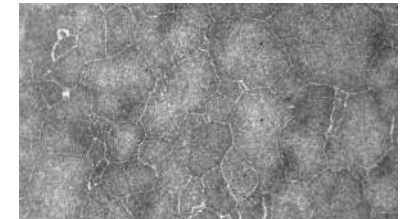
Combustor alloy

GB1408536



RR1000 grain growth

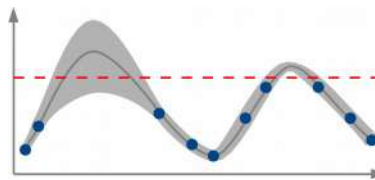
Acta Materialia, 61, 3378



Discovery algorithm

EP14153898

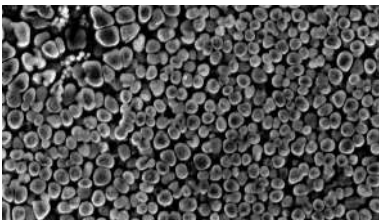
US 2014/177578



Ni disc alloy

EP14157622

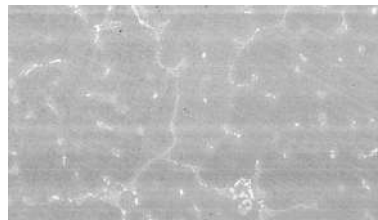
US 2013/0052077 A2



Mo-Hf forging alloy

EP14161255

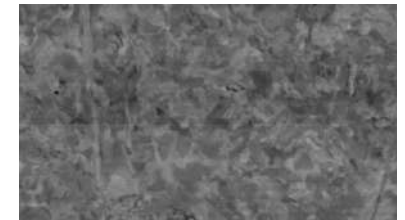
US 2014/223465



Mo-Nb forging alloy

EP14161529

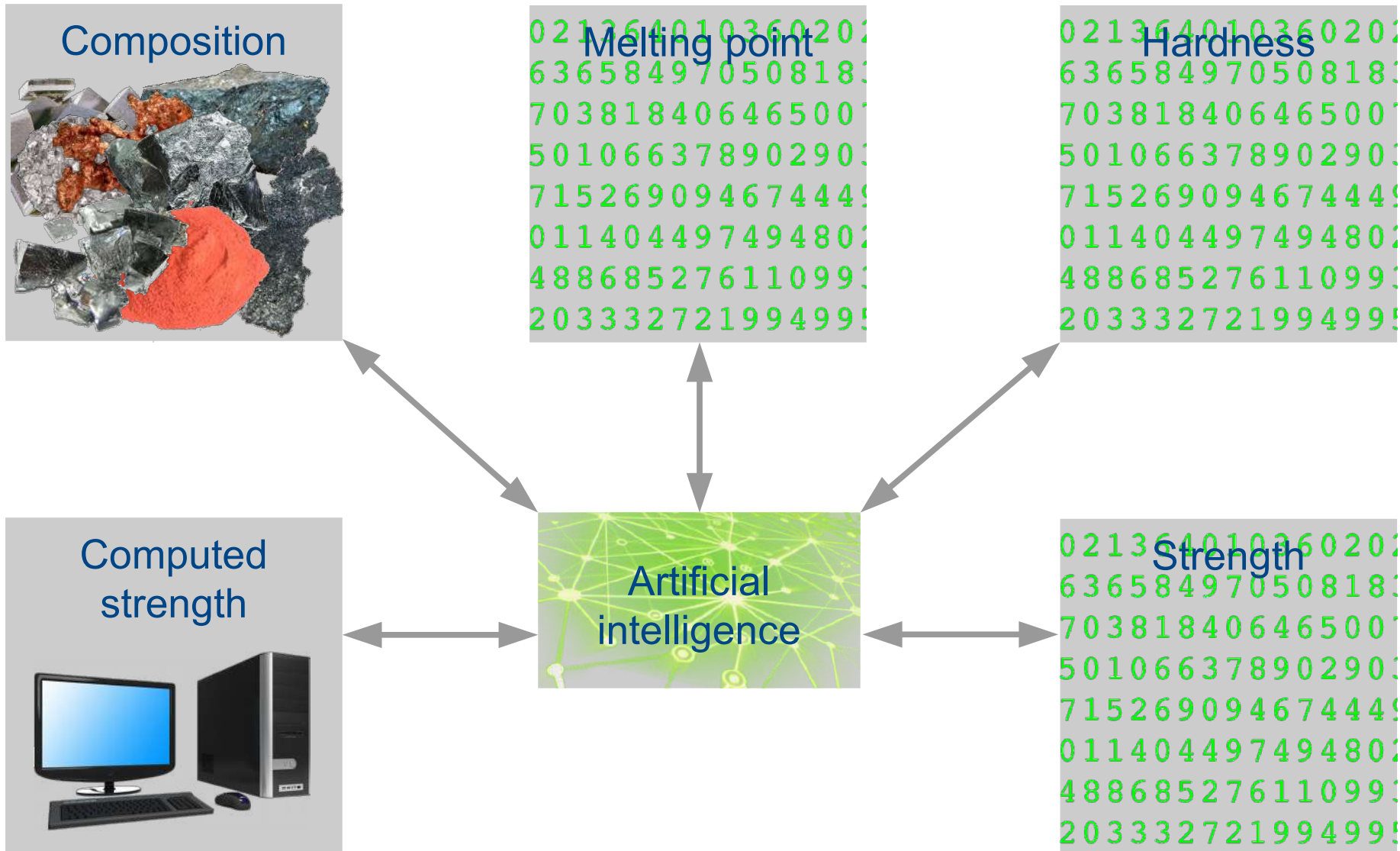
US 2014/224885



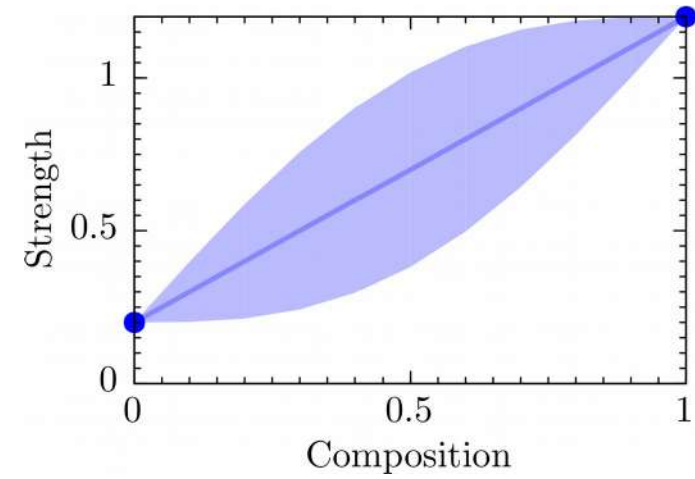
Fragmented databases

Composition	Computed strength	Melting point	Hardness	Strength
✓	✓	✓	✓	✓
✓	✓	✗	✓	✓
✓	✓	✗	✗	✓
✓	✓	✓	✓	✗
✓	✓	✓	✗	✗
✓	✓	✗	✓	✗
✓	✓	✗	✗	✗

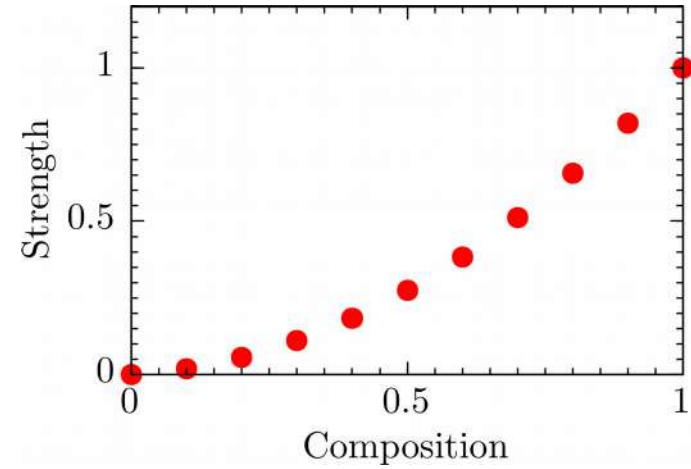
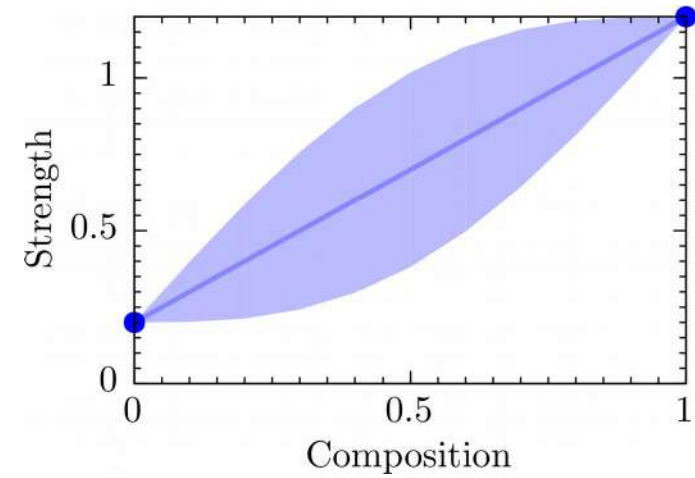
Merging simulation and experiment



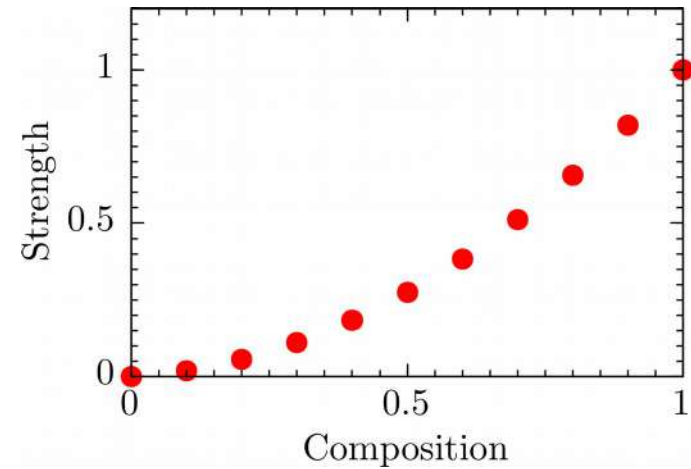
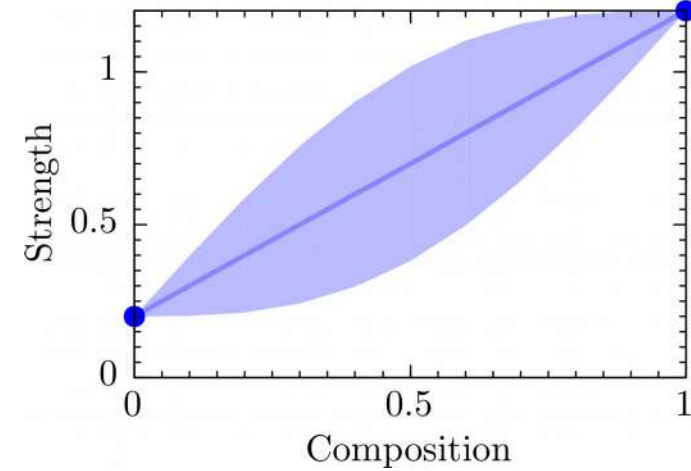
Merging simulation and experiment



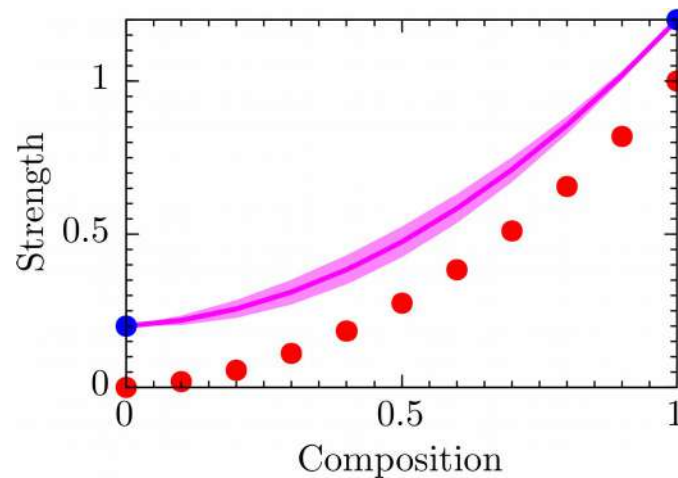
Merging simulation and experiment



Merging simulation and experiment



Combine



Designing a lithium cathode

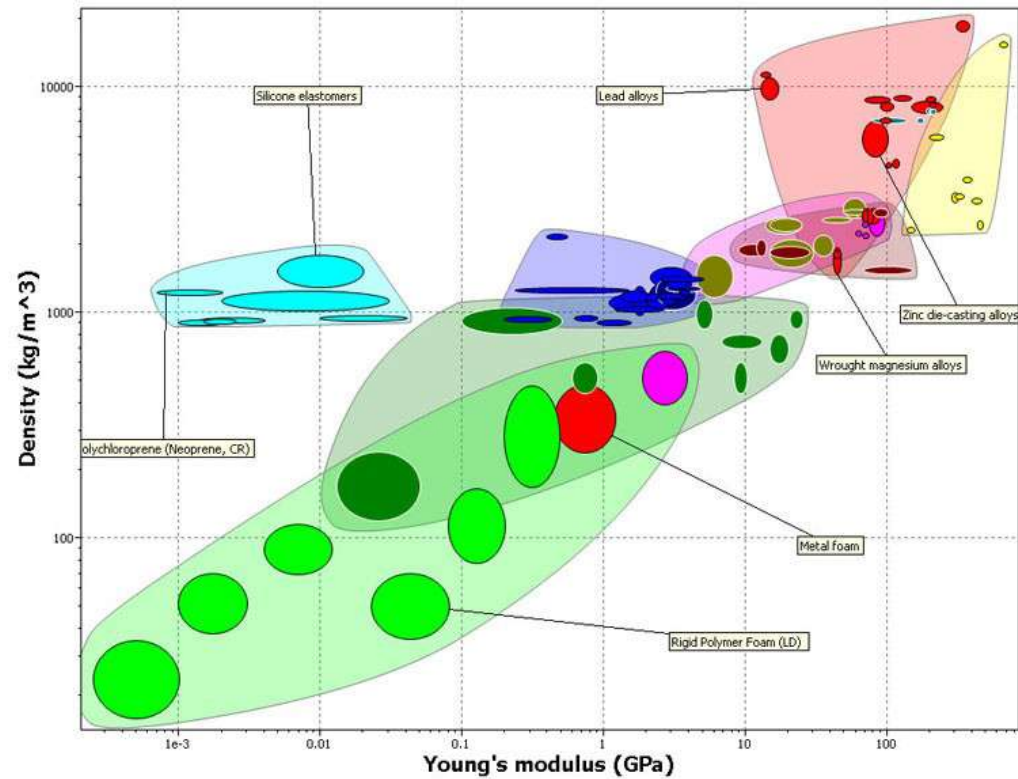


Experiment



Computational

Database verification



Database contains $>10^7$ separate entries

Summary

Analyze databases with artificial intelligence to discover four new alloys

Merge fragmented computational and experimental databases

Materials database verification and completion