

# The modern day blacksmith

Gareth Conduit

Theory of Condensed Matter group

# Machine learning algorithm to

Train from **sparse** datasets

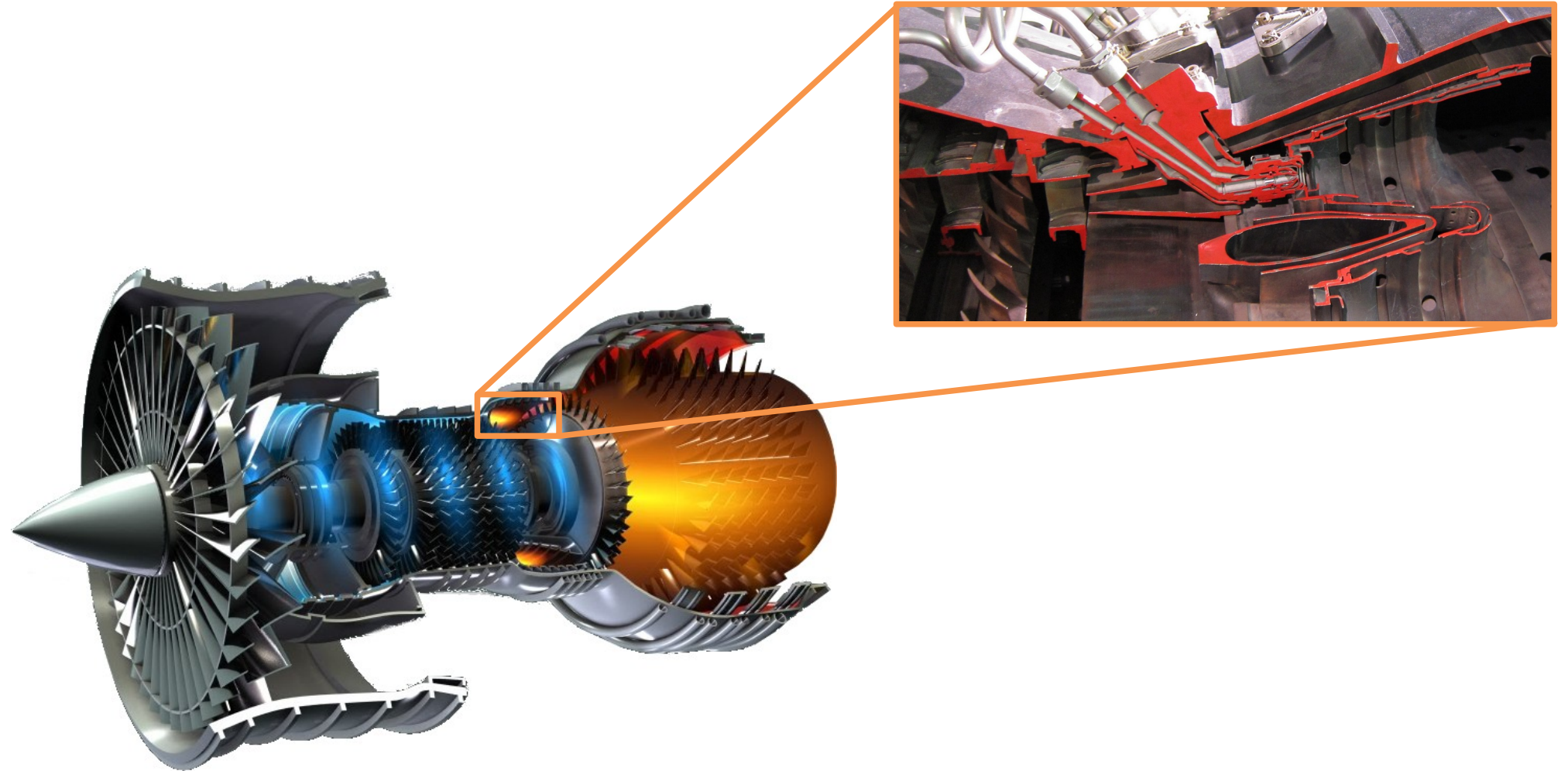
**Merge** simulations, physical laws, and experimental data

**Reduce** the need for expensive experimental development

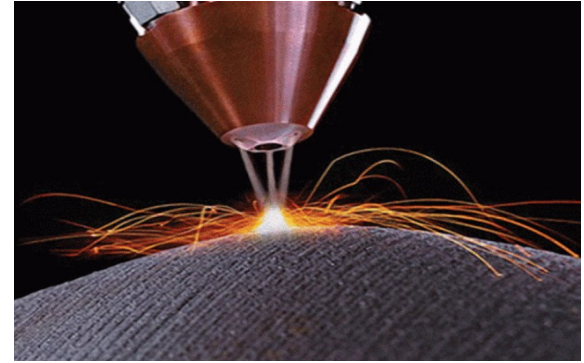
**Accelerate** discovery of new formulations

**Generic** with **proven** applications in materials and pharmaceuticals

# Combustor for a jet engine



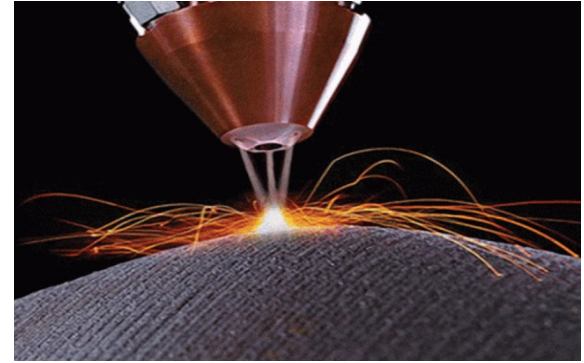
# Direct laser deposition requires new alloys



# Analogy between 3D printing and welding



Electricity



Laser

# Target properties

Elemental cost < 25 \$kg<sup>-1</sup>

Density < 8500 kgm<sup>-3</sup>

γ' content < 25 wt%

Oxidation resistance < 0.3 mgcm<sup>-2</sup>

Processability < 0.15% defects

Phase stability > 99.0 wt%

γ' solvus > 1000°C

Thermal resistance > 0.04 KΩ<sup>-1</sup>m<sup>-3</sup>

Yield stress at 900°C > 200 MPa

Tensile strength at 900°C > 300 MPa

Tensile elongation at 700°C > 8%

1000hr stress rupture at 800°C > 100 MPa

Fatigue life at 500 MPa, 700°C > 10<sup>5</sup> cycles

# Composition

Cr: 19%



Co: 4%



Mo: 4.9%



W: 1.2%



Zr: 0.05%



Nb: 3%



Al: 2.9%



C: 0.04%



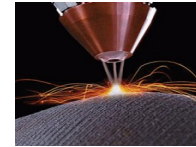
B: 0.01%



Ni



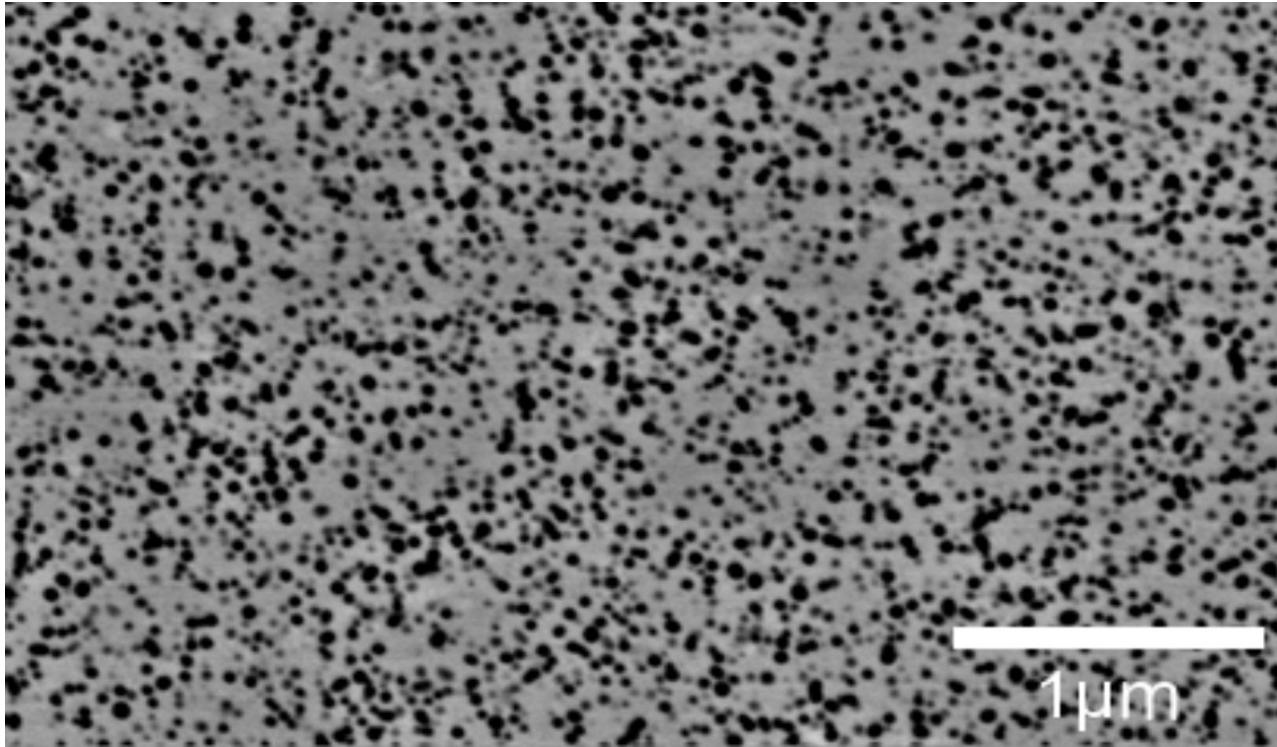
Expose 0.8



$T_{HT}$  1300°C

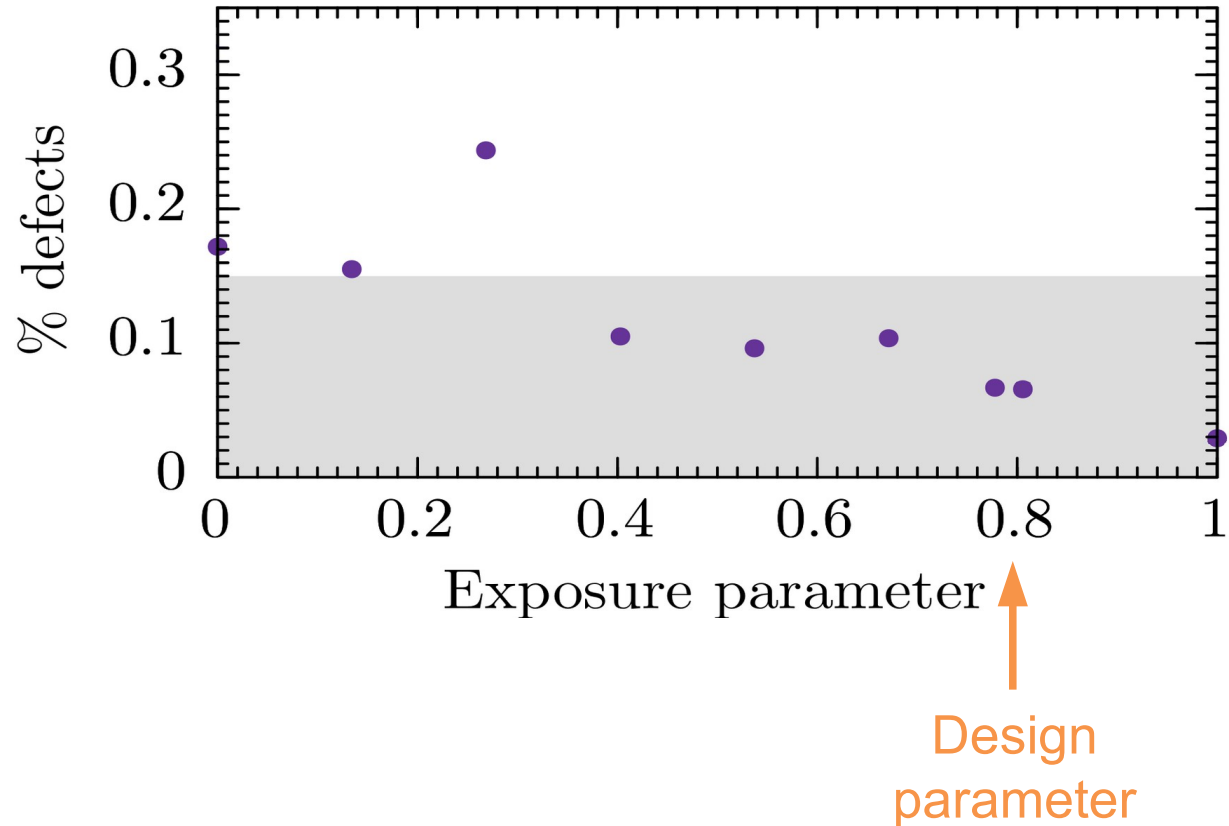


# Microstructure



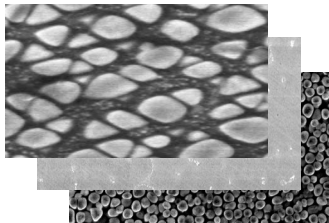


# Testing the processability: horizontal printing



# More materials designed

Nickel and molybdenum



Steel for welding

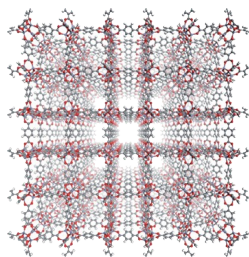


Experiment and DFT for batteries



# Application to chemicals and drugs

Metal organic framework



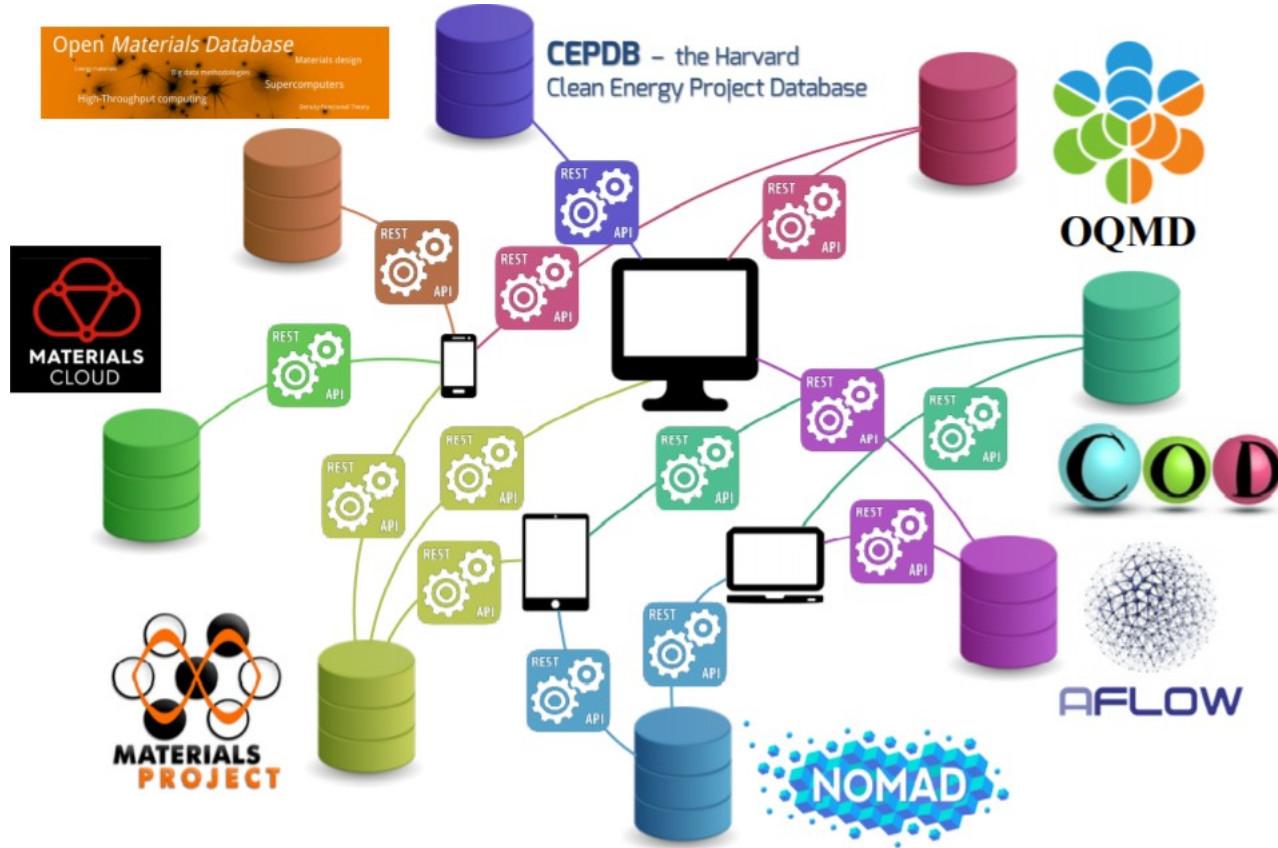
Lubricants with molecular dynamics and experiments



Drug design

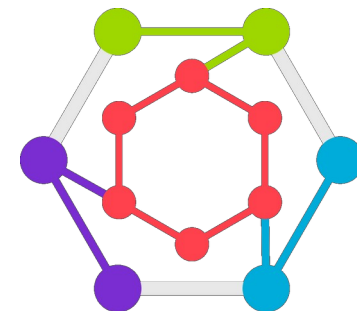
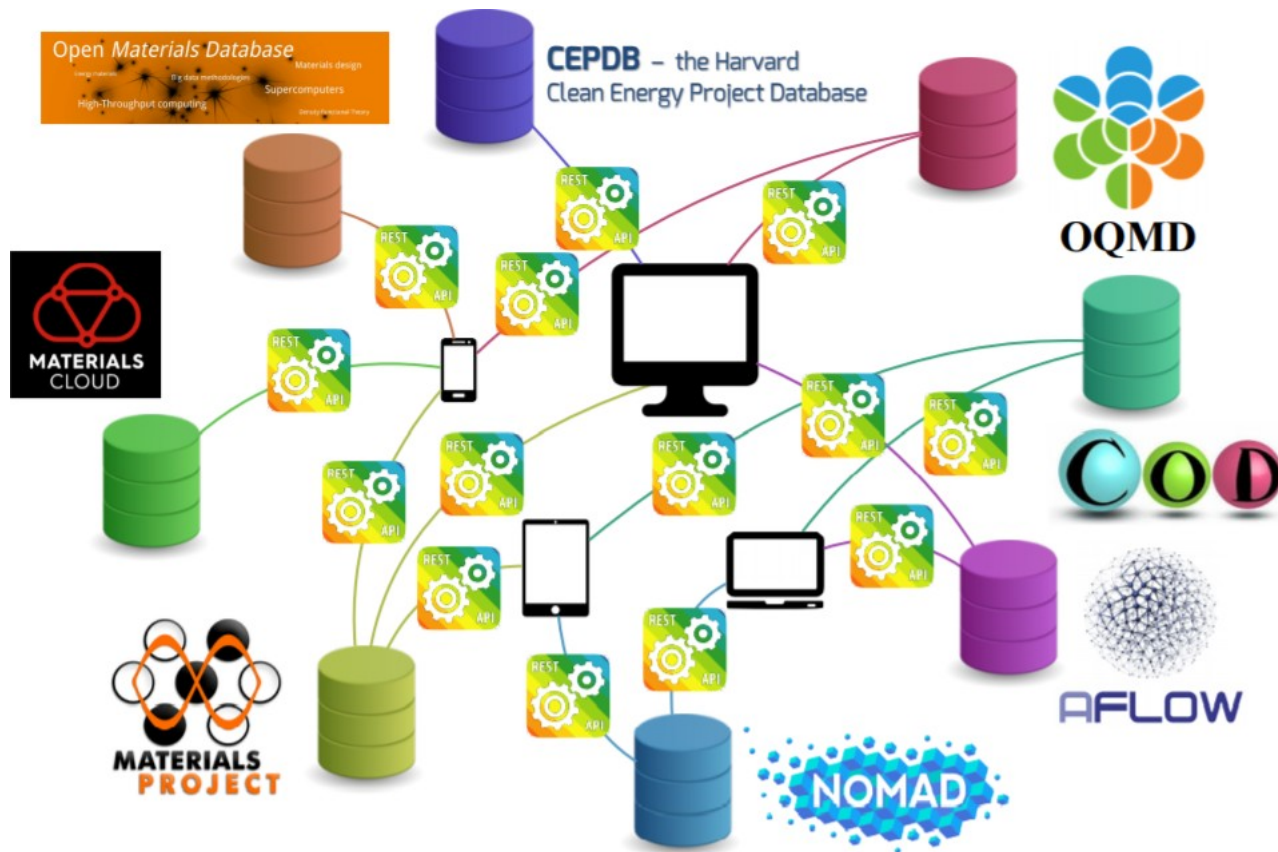


# Machine learning requires extensive access to different databases



Each material database has a bespoke API, an obstacle for machine learning

# OPTIMADE defines a common API



OPTIMADE provides a common API for accessing materials databases

[www.optimade.org](http://www.optimade.org)

# Summary

Merge different experimental quantities and computer simulations into a **holistic** design tool

Designed and experimentally verified alloy for **direct laser deposition**

Access databases through the **OPTIMADE** API

Marketed through startup **intellegens**, <https://intellegens.ai/>