

Research commercialization in Cambridge

Gareth Conduit

Alchemite™ machine learning tool to

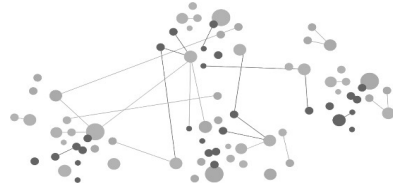
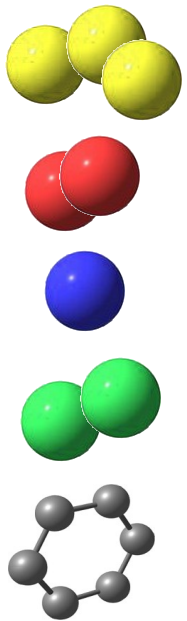


Utilise **all available** information: computer simulations and real-life measurements

Reduce the need for experiments and **accelerate** discovery

Broadly applicable with **proven** applications in drug design, industrial chemicals, and materials

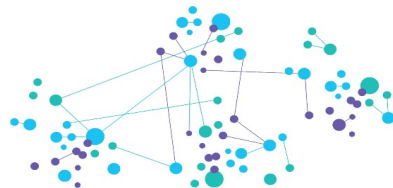
Machine learning as a black box



Train from historical data



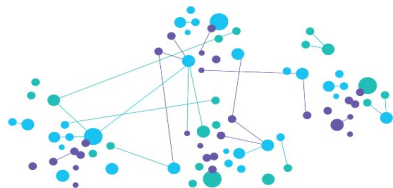
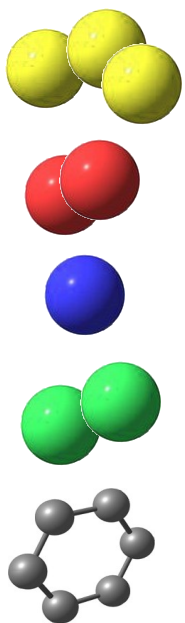
293928764790904
021364010360201
636584970508181
703818406465007
501066378902901
715269094674449
011404497494801
488685276110991
203332721994999
976579342243418
394046703960391
597692868112391
376413439487341
366524472773781
144219810326610
805556069526641
983443994881091



293928764790904
021364010360201
636584970508181
703818406465007
501066378902901
715269094674449
011404497494801
488685276110991
203332721994999
976579342243418
394046703960391
597692868112391
376413439487341
366524472773781
144219810326610
805556069526641
983443994881091



Predict new chemicals



First foray into machine learning at University of Cambridge



2013

Multiple
properties for
Rolls Royce
engines

Development of core machine learning ideas



2013

Multiple properties for Rolls Royce engines

2014

Property-property correlations with Rolls Royce and BP

Realign research focus to machine learning



*Concurrent
materials design*



2013

Multiple properties for Rolls Royce engines

2014

Property-property correlations with Rolls Royce and BP

2015

Royal Society University Research Fellowship

First large machine learning contract as principal investigator



*Concurrent
materials design*



2013

Multiple
properties for
Rolls Royce
engines

2014

Property-
property
correlations
with Rolls
Royce and BP

2015

Royal Society
University
Research
Fellowship

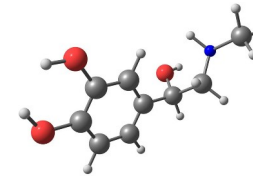
2016

Experiment-
simulation
correlations
with Samsung
Electronics

Initial application of machine learning to drug discovery



Concurrent materials design



2013

Multiple properties for Rolls Royce engines

2014

Property-property correlations with Rolls Royce and BP

2015

Royal Society University Research Fellowship

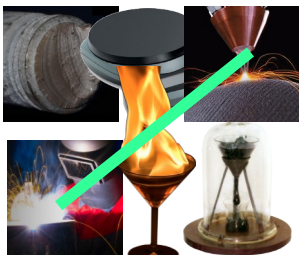
2016

Experiment-simulation correlations with Samsung Electronics

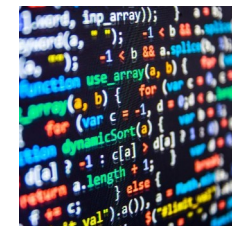
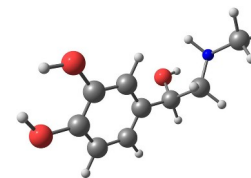
2017

Drug discovery study with e-therapeutics

Commercializing the methodology



Concurrent materials design



2013

Multiple properties for Rolls Royce engines

2014

Property-property correlations with Rolls Royce and BP

2015

Royal Society University Research Fellowship

2016

Experiment-simulation correlations with Samsung Electronics

2017

Drug discovery study with e-therapeutics

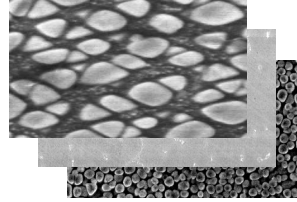
2018

Founding of Intellegens

Materials designed



Nickel and molybdenum



Steel for welding



Experiment and DFT for batteries



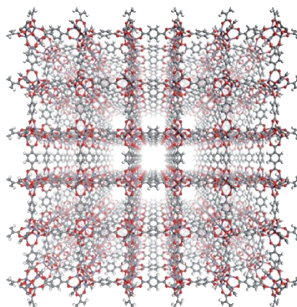
More materials designed



Ink formulations



Metal organic framework



Lubricants with molecular dynamics and experiments



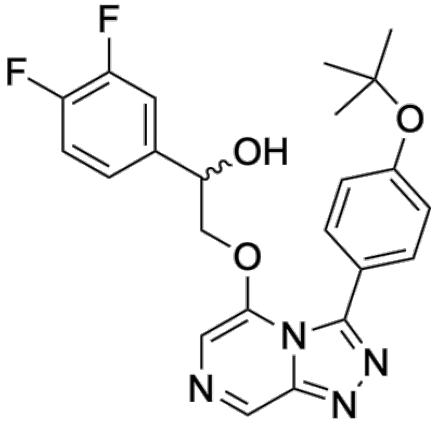
Open Source Malaria competition



OPEN SOURCE MALARIA

Looking for New Medicines

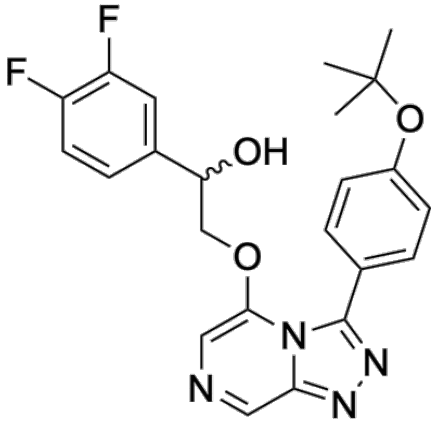
Open Source Malaria experimental validation



Optibrium & Intellegens

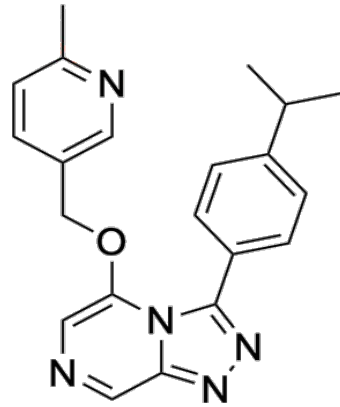
0.647 μM

Open Source Malaria other compounds



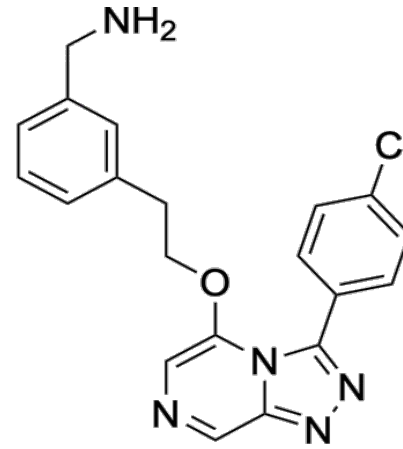
Optibrium & Intellegens

0.647 μM



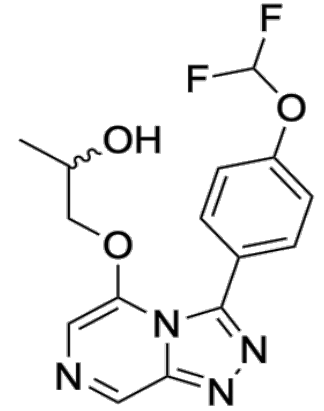
Davy Guan

>25 μM



Exscientia

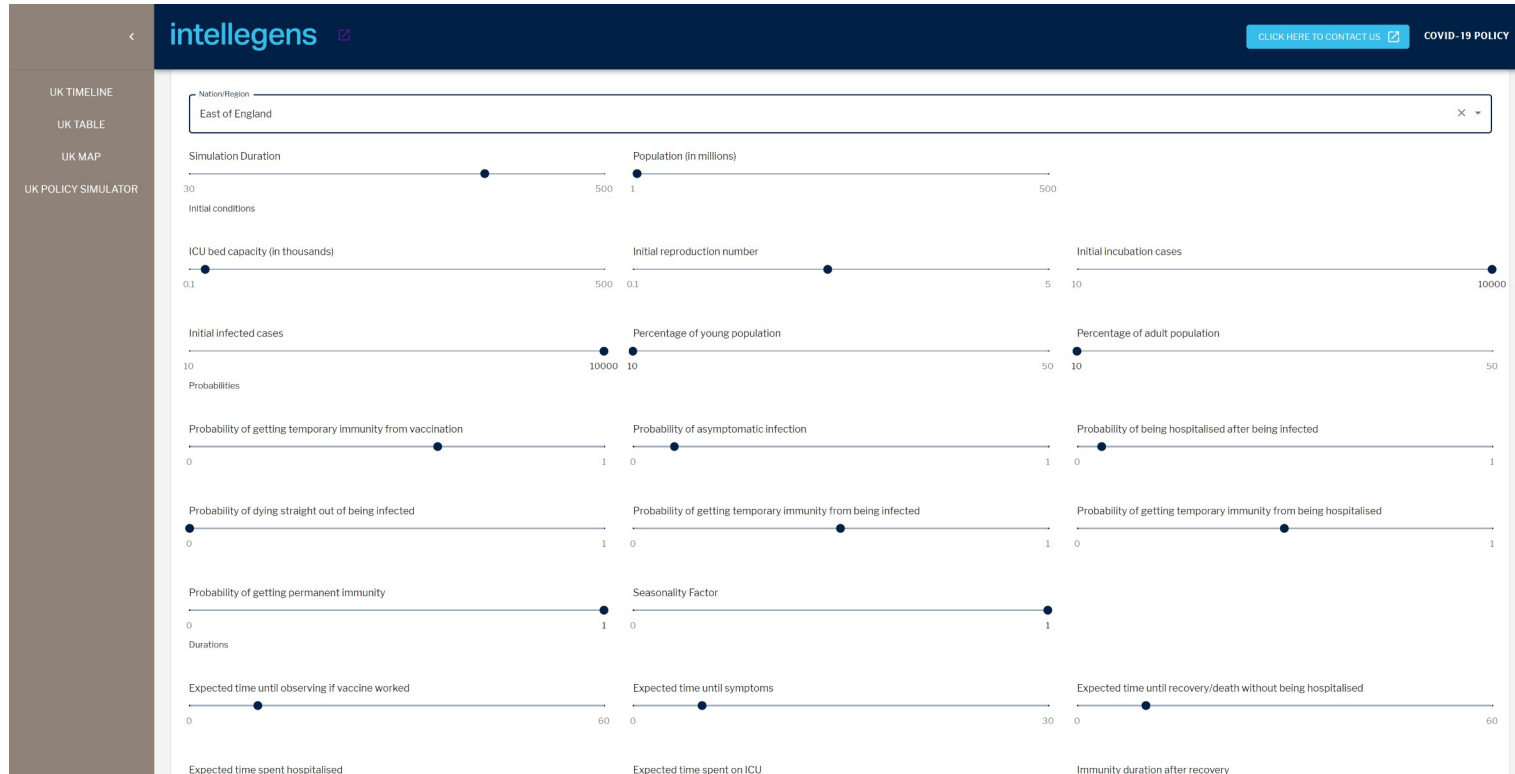
10.9 μM



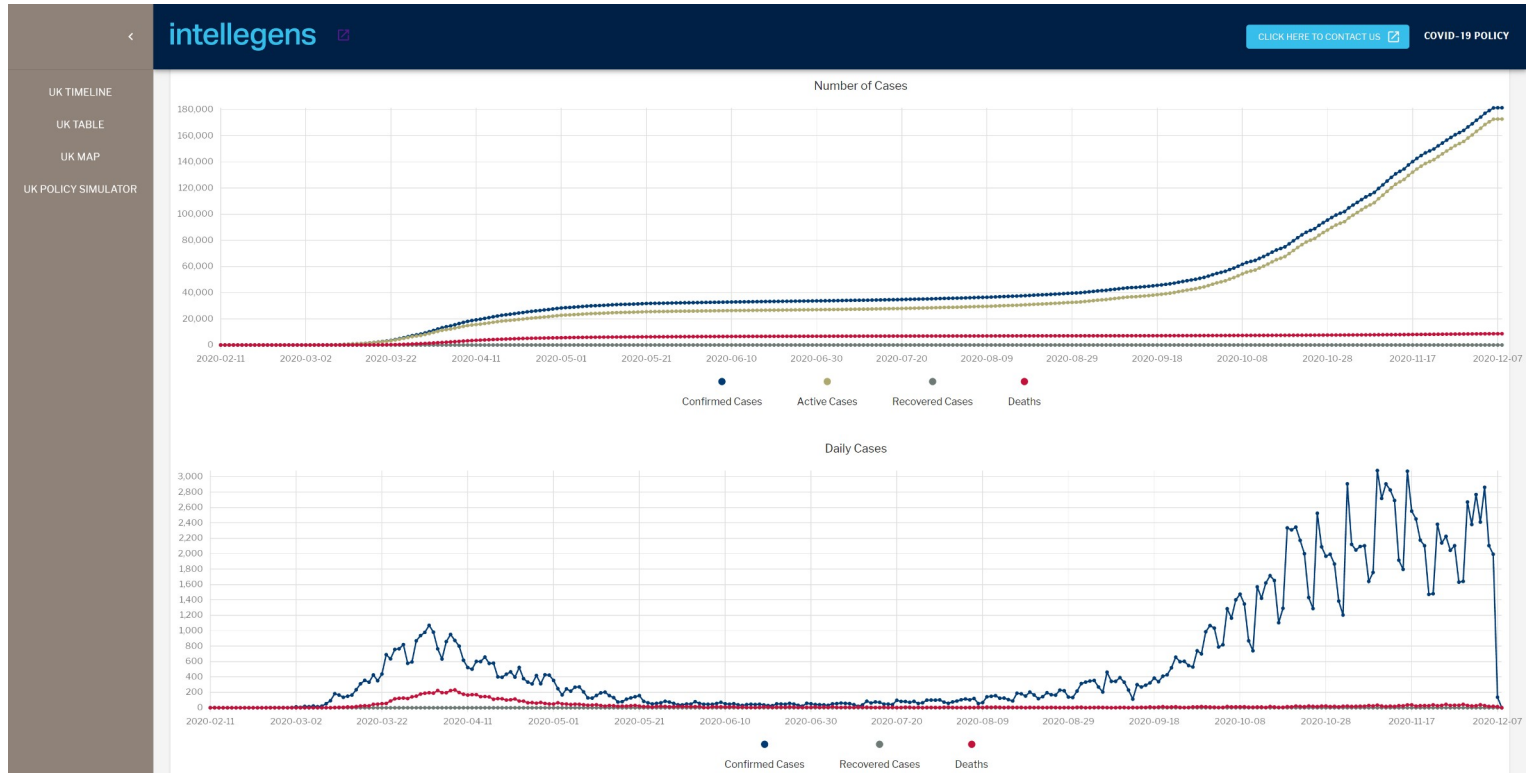
Molomics

>25 μM

COVID-19 modeling: inputs



COVID-19 modeling: outputs



COVID-19 modeling: market



Utilise **all available** information: daily and weekly information from different countries

Predictive tool for supplier to anticipate market demand

Long-term application to **seasonal diseases** such as influenza

Initial contracts for Intellegens



2018

Bring across
contracts from
University

Starting the development of a product



 therapeutics



*Demonstrator for
application of AI
to experimental
data*

2018

2018

Bring across
contracts from
University

InnovateUK
grant

Enter the market as a reseller



*Demonstrator for
application of AI
to experimental
data*

2018

Bring across
contracts from
University

2018

InnovateUK
grant

2018

Reseller
agreement
with Optibrium

Build out technology through consultancy projects



Innovate UK



Demonstrator for application of AI to experimental data



2018

Bring across contracts from University

2018

InnovateUK grant

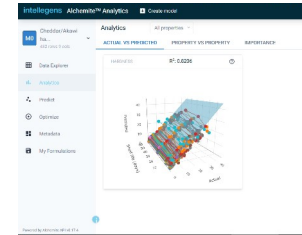
2018

Reseller agreement with Optibrium

2019

Consultancy work

Launch Intellegens generic industrial formulations product



Demonstrator for application of AI to experimental data

2018

2018

2018

2019

2020

Bring across contracts from University

InnovateUK grant

Reseller agreement with Optibrium

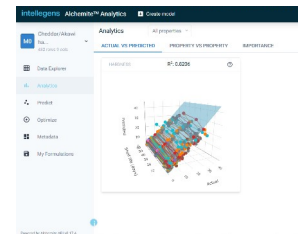
Consultancy work

Release Alchemite Analytics™ product

Launch drug design product



Innovate UK



Demonstrator for application of AI to experimental data

2018

Bring across contracts from University

2018

InnovateUK grant

2018

Reseller agreement with Optibrium

2019

Consultancy work

2020

Release Alchemite Analytics™ product

2021

Reseller agreement with Ansys

Questions for commercialization of research



- Investment** Organic growth or seek venture capital
- Breadth** Generic technology, but how many verticals should we enter?
- Sales** Enter a vertical directly or through a reseller?
- Exit strategy** Seek maximum impact but opportunity to develop next idea

Contact gareth@intellegens.ai
Website <https://intellegens.ai>
Demo https://app.intellegens.ai/steel_optimise
Papers <https://www.intellegens.ai/paper.html>