

# Probabilistic design of a molybdenum-base alloy using a neural network

B.D. Conduit

*Rolls-Royce plc, PO Box 31, Derby, DE24 8BJ, United Kingdom*

N.G. Jones

*Department of Materials Science & Metallurgy, University of Cambridge, 27 Charles Babbage Road, Cambridge, CB3 0FS, United Kingdom*

H.J. Stone

*Department of Materials Science & Metallurgy, University of Cambridge, 27 Charles Babbage Road, Cambridge, CB3 0FS, United Kingdom*

G.J. Conduit

*Cavendish Laboratory, University of Cambridge, J.J. Thomson Avenue, Cambridge, CB3 0HE, United Kingdom*

---

## Abstract

An artificial intelligence tool is exploited to discover and characterize a new molybdenum-base alloy that is the most likely to simultaneously satisfy targets of cost, phase stability, precipitate content, yield stress, and hardness. Experimental testing demonstrates that the proposed alloy fulfills the computational predictions, and furthermore the physical properties exceed those of other commercially available Mo-base alloys for forging-die applications.

*Keywords:* modeling, refractory metals, forging, mechanical properties, neural network

---

The contemporary approach to develop new materials is experiment driven trial and improvement [1]. This approach may take up to twenty years to design and verify a new material. The long lead time rules out designing new materials alongside products, instead forcing engineers to compromise products around the shortcomings of pre-existing materials. The opportunity to discover materials computationally has the potential to empower engineers to design optimal materials at the same time as new products [2], bringing materials into the heart of the design process. Previous approaches to design new materials on a computer include ranking compositions with a Pareto set [3–5], characterizing materials with a principal component analysis [6], robust design [7], and the orthogonal optimization of different properties [2, 8–11]. However, these methods cannot simultaneously optimize the compromise between material properties and capture the deep correlations between composition and final properties. Therefore, in this paper, a new artificial intelligence tool [12] that can capture the full composition-property relationship is used to propose the new Mo-base alloy for forging die applications that is most likely to satisfy all target properties simultaneously.

Mo-base alloys offer exceptional strength at high temperature. This makes them suitable for refractory applications including fission and fusion reactors, rocket engine nozzles, furnace structural components, and forging dies. However, the next generation of forging applica-

tions will demand yet higher operating temperature requiring a new generation of Mo-base alloys. Existing Mo-base alloys such as MHC (1.1wt% Hf, 0.1wt% C, balance Mo), TZC (1.2wt% Ti, 0.1wt% C, 0.3wt% Zr, balance Mo), TZM (0.5wt% Ti, 0.02wt% C, 0.08wt% Zr, balance Mo), and ZHM (1.2wt% Hf, 0.1wt% C, 0.4wt% Zr, balance Mo) [13] contain minimal strengthening precipitates, so there is an opportunity to optimize the content of HfC and other carbides in Mo-base alloys to improve strength at high-temperature. Critically, the effective exploitation of strengthening precipitates requires a firm understanding of the relationship that exists between the alloy composition and its phase stability, strength and cost; a multidimensional problem that is an ideal application of an artificial intelligence tool.

The first section of this paper outlines the artificial intelligence tool and specifies the chosen targets for the relevant material properties: cost, phase stability, HfC content, yield stress, and hardness. In the second section, the tool is used to propose the new Mo-base alloy that is most likely to exceed the design targets. The final section presents experimental results for the phase stability, HfC content, and hardness to verify the model predictions and demonstrate that the alloy has properties that surpass those of other commercially available Mo-base forging die alloys.

The goal of the neural network tool is to predict the composition and processing variables that are most likely

Property	Target	Approach	Data
Cost	<52/cycle	Physical	[14–18]
Phase stability	>81wt%	CALPHAD	[19–25]
HfC content	>1wt%	CALPHAD	[19–25]
1000°C yield stress	>398MPa	Neural net	212[26–36]
1000°C hardness	>1908MPa	Neural net	740[26–51]

Table 1: The approach used to predict properties, the property targets, number of experimental points used to train neural network models, and references for the data are shown.

to produce a material that fulfills the multi-criteria target specification. The tool and methodology follows the prescription developed in Ref. [12]. The tool first constructs a predictive model for each property as a function of the composition, which for the Mo-base alloys presented in this paper comprises of the elements {Nb, Ti, C, Zr, Hf, W, Mo}. The tool can then calculate the likelihood that a putative composition fulfills the target specification, so that it can search composition space for the alloy most likely to meet the target specification.

Materials must fulfill a wide ranging specification to ensure that they best meet the needs of their target application. The properties that were optimized in the design of the Mo-base alloys are shown in Table 1. With properties depending on contrasting physics, for each property a different source of data must be adopted, which are referenced in the tables. The cost per cycle – the effective cost per usage as a forging hammer, which must be minimized, is predicted using a model of the weighted commercial elemental prices. The alloys with the most suitable mechanical properties are expected to be those that possess a Mo solid solution containing only HfC and other carbide precipitates. The low diffusion constant in Mo alloys below 1500°C [52, 53] means that the phase stability and HfC content should reflect the likely room temperature condition of an as-cast alloy. The thermodynamic phase stability and HfC content is evaluated by a neural network trained on a database comprising of CALPHAD results, with the data sourced from the SSOL6 database [24, 25]. The use of a neural network to predict phase stability dramatically speeds up the alloy optimization process as it is computationally less intensive than individual thermodynamic calculations. It is essential for forging-die alloys to be strong, particularly in compression, so both the yield stress and also the hardness must be maximized. However, the yield stress and hardness cannot be reliably calculated by computer modeling from first principles. Instead a database of experimental results for all of the properties as a function of composition is compiled from the sources referenced in Table 1 comprising of alloys in an as-cast condition and exclusively of the Mo solid solution phase behavior prescribed by the thermodynamic predictions. The scarcity of hardness data means that the neural network can be improved if it is supplemented with ultimate tensile strength data. The neural network formalism [12] can automatically identify the link between ultimate ten-

sile strength and hardness (known to be approximately  $\times 3$  [54]) from common compositions, and then use the surplus ultimate tensile strength data at other compositions to guide the extrapolation of the hardness model.

After the database of material properties in Table 1 is compiled, a neural network model is trained on that data to predict the physical properties for a given composition. The form of neural network and approach to training follows that in Ref. [12] used to develop Ni-base superalloys. The design variables were the elemental concentration of {Nb, Ti, C, Zr, Hf, W, Mo}. Typically three hidden nodes gives the best fitting neural network. The neural network model predicted not only the expected value of the physical property but also the uncertainty associated with it, accounting for experimental uncertainty in the underlying data, the uncertainty in the extrapolation of the training data [55, 56], and the uncertainty in the processing conditions of as-cast alloys.

In this approach, the individual material properties are converted into a single merit index that describes the likelihood that the material properties ( $\mathbf{V}$ ) satisfies the design criteria ( $\mathbf{T}$ ) is  $L = \Phi[\mathbf{\Sigma}^{-1}(\mathbf{V} - \mathbf{T})]$ . Here  $\Phi$  is the multivariate cumulative normal distribution function and  $\mathbf{\Sigma}$  is the covariance matrix [57]. Combining the individual property likelihoods enables an estimate to be made of the likelihood that the alloy will fulfill the whole specification. Critically, this overall likelihood will be much lower than that of an individual property target being met. For example, for a five-part specification, if the material has a 50% likelihood of fulfilling each design criterion, the overall likelihood that it simultaneously fulfills five criteria is  $0.5^5 \approx 0.03$ , so 3%. It is therefore crucial that the likelihood of the material meeting the conformance specification is maximized. The use of likelihood also allows the tool to explore and select the ideal compromise between material properties, which is inaccessible with methods that do not account for likelihood, such as a principal component analysis [6] and robust design [7]. Similarly, the design tool may interpolate between experimental data, exploring more compositions than would be accessible by an experimentally driven search. Using a neural network to interpolate allows us to capture deeper correlations than linear regression methods such as those used in principal component analysis [6].

As well as predicting material properties, the tool must simultaneously optimize them against the set targets. Previous optimization techniques included running over a pre-determined grid of compositions, and then sieving them with trade-off diagrams [10], or a Pareto set [3–5]. However the expense of these methods scales exponentially with the number of design variables rendering them impractical. Another approach is to use genetic algorithms [58, 59], but this approach is not mathematically guaranteed to find the optimal solution [60, 61], and it displays poor performance in high dimensional problems [60, 61]. Here we maximize the logarithm of the likelihood  $\log(L)$  to ensure that in the region where the material is predicted to not satisfy the specification the optimizer runs up a constant

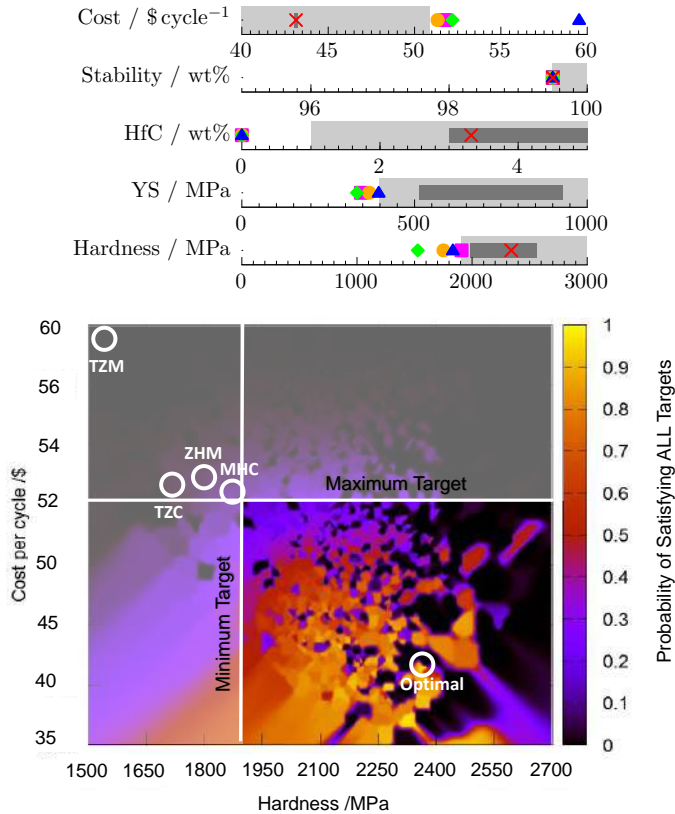


Figure 1: *Upper*: Summary of properties for the Mo-base alloy. For each listed property the gray box refers to the acceptable target properties, the dark gray is the three-sigma uncertainty on the theoretical prediction. The points refer to experimentally measured values with  $\times$  the proposed alloy,  $\blacksquare$  MHC,  $\bullet$  TZC,  $\blacklozenge$  TZM, and  $\blacktriangle$  ZHM. *Lower*: The compromise between hardness and cost per cycle made in the design of the Mo-base alloy. The white shaded areas show regions that fail to meet hardness and cost targets. The color of shading shows the likelihood of exceeding all of the targets, following the scale on the right. The white circles show the proposed and existing alloys.

gradient slope that persistently favors the least optimized property. We explore the high-dimensional composition space with a random walk which uses a step length that is comparable to the accuracy with which a material could be manufactured, this is 0.1wt% for the entire composition excluding the possibility of microsegregation. The tool typically search over  $\sim 10^8$  sets of design variables in  $\sim 1$  hour to explore the space and search for an optimal material.

With the neural network tool in place it is now used to design a new Mo-base forging die alloy. Once, designed, the properties of the alloy are subsequently verified by experiment. The goal is to design a new Mo-base alloy that offers both improved high-temperature hardness and concomitant greater lifetime with lower in-service costs at  $\sim 1000^\circ\text{C}$ . This case study not only serves as an independent test of the alloy design approach, but moreover leads to an alloy with properties that exceed those of other, commercially available Mo-base alloys.

The first step to design an alloy is to set the target spec-

Optimal composition (wt%)			
Nb	$5.7 \pm 0.2$	Zr	$0.9 \pm 0.1$
Ti	$1.0 \pm 0.1$	Hf	$9.0 \pm 0.1$
C	$0.20 \pm 0.01$	W	$0.5 \pm 0.2$
Mo	Balance		

Table 2: The composition of the Mo-base alloy (wt%). The design tolerance shows all compositions that are predicted to fulfill the target specification.

ification. This is shown in Table 1 and compared with commercially available Mo-base alloys in Figure 1(a). The alloy should be cheaper than the previous cheapest Mo forging alloy, TZC, at  $52 \text{ \$ cycle}^{-1}$ . To avoid forming deleterious phases that could weaken the alloy it must have good phase stability, defined as the concentration of the Mo-base solid solution rather than other deleterious phases, comparable or better than previous Mo alloys of 81wt%. At the same time, the Mo alloy should be strengthened by HfC and other carbides, so there should be at least 1wt% HfC precipitate formation. The yield stress should be greater than 398 MPa at  $1000^\circ\text{C}$ , that of the best alloy available, ZHM. The alloy should also have a hardness higher than the highest of the Mo alloys, MHC, of 1908 MPa at  $1000^\circ\text{C}$ . These targets mean that the new Mo-base alloy will have properties superior to those of any commercially available alloy. Neural network models for the cost, phase stability, volume fraction of the reinforcing phase, yield stress, and hardness are trained using data from the references in Table 1. The neural networks will then be used to optimize the composition to search for the alloy most likely to exceed the target specification.

The composition proposed in Table 2 has a 99.1% likelihood of meeting the target specification in Figure 1(a), it notably has high levels of Hf at 9wt% to allow 4wt% of HfC precipitates to form, alongside other carbides, to strengthen the alloy. The theoretical predictions for the alloy all fall within the required targets, with the alloy being substantially cheaper than required at  $43 \text{ \$ cycle}^{-1}$ , and the yield stress of 722 MPa and hardness of 2274 MPa being considerably greater than the target specification. In fact, it is predicted that all of the properties of the alloy will simultaneously exceed all properties of commercially available Mo-base alloys. The composition is quoted with a range of concentrations that all satisfy the target criteria.

Inevitably, the designer must make a compromise between the different properties of an alloy. This can be directly visualized, Figure 1(b) illustrates the trade-off made between hardness and cost. The positive trend of the bands of iso-likelihood shows how alloys with good mechanical properties are also more expensive, due to increased but expensive Hf additives. This landscape allows an engineer to select the ideal compromise for their application, for example with the aid of an Ashby plot [62]. The proposed alloy is the one most likely to fulfill the targets highlighted as it lies in the region of highest likelihood.

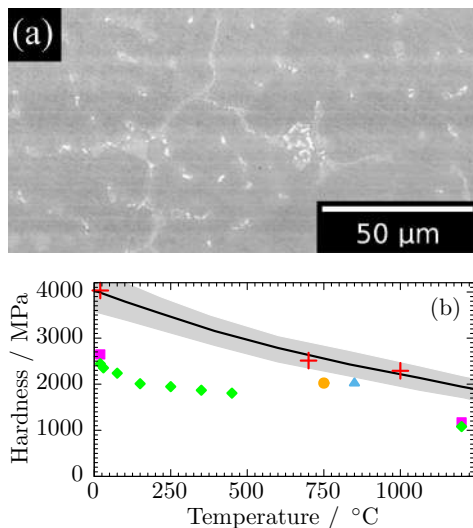


Figure 2: (Color online) (a) Secondary electron micrograph image for the Mo alloy. (b) Hardness as a function of temperature, the black line shows the theoretical prediction and gray the uncertainty. The points refer to experimentally measured values with + the optimal alloy, ■ MHC, ● TZC, ◆ TZM, and ▲ ZHM.

This is located at a hardness far higher than the minimum hardness target since there is a large uncertainty on hardness predictions, but nearer to the maximum cost target since there is a smaller uncertainty on predictions of cost. The rapidly varying likelihood of satisfying all of the targets reflects how other properties vary rapidly due to the underlying and locally optimized composition changing markedly. This variation is similar to that seen in the design of the Ni-base superalloys [12].

The proposed alloy is predicted to fulfill the target specification. However, experiments will provide the true test of the performance of the new alloy. The synthesis of the proposed Mo-base alloy starts with pelletized elements having purity greater than 99.9%, that are arc-melted into a 50 g ingot through five successive inversion and re-melt cycles. Brinell hardness testing was conducted on multiple specimens following a 15 minute dwell at the testing temperature. Measurement of the indentation was obtained using SEM.

Figure 2(a) shows a secondary electron micrograph of the alloy. The emergence of a single Mo-rich matrix phase strengthened by carbide precipitates verifies the stability prediction. Spot energy dispersive X-ray spectroscopy confirmed that the white precipitates are predominantly HfC, which acts as the main strengthener, with additional strengthening from Ti, Nb, Ta, and W that are fully miscible above 882°C [63] in the Mo-rich solid solution and so minimal deleterious phases were formed. The fraction of HfC is 4wt%, in line with theoretical predictions and greater than that in MHC of 0.5wt%, so the alloy should itself have good compressive strength. A trial heat treatment of 1000°C for 20 hours showed no microstructure evolution, confirming the stability with respect to microstruc-

tural evolution. Finally, the hardness is measured as a function of temperature. Figure 2(b) shows that the alloy possesses a significantly higher hardness than the commercially available alloys at high temperatures, making it particularly suitable for refractory applications.

The experimental results are summarized in Figure 1(a). The four crucial properties of the proposed alloy (cost, phase stability, volume fraction of the HfC reinforcing phase, and hardness) are in accordance with the theoretical predictions, exceed the targets, and surpass the properties of the commercial alloys MHC, TZC, TZM, and ZHM. Furthermore, the neural network tool has been used to propose another Mo-base alloy [64] but with NbC based hardeners, which has also been experimentally verified. This both demonstrates the capabilities of the materials optimization approach and has identified an alloy that may have potential refractory applications, and in particular as a forging die.

A new computational tool was used to propose the Mo-base alloy most likely to simultaneously fulfill five different physical criteria given the experimental and computational data available. The new proposed alloy has been experimentally verified to have properties that exceed other, commercially available Mo-base alloys. The Mo-base alloy has the ideal properties to be used as a forging die for use on future high strength superalloys at the high temperatures  $\sim 1000 - 1100^\circ\text{C}$ .

The neural network tool has also been used to design another Mo-based alloy based on niobium precipitates [64], and two nickel-base alloys [65, 66] that have also been experimentally verified [12]. The capability to rapidly discover materials computationally should empower engineers to instantly optimize bespoke materials for their application, bringing materials into the heart of the design process.

The authors acknowledge the financial support of Rolls-Royce plc, EPSRC under EP/H022309/1 and EP/H500375/1, the Royal Society, and Gonville & Caius College. There is Open Access at <https://www.openaccess.cam.ac.uk>.

- [1] S. Curtarolo, G. Hart, M. Buongiorno Nardelli, N. Mingo, S. Sanvito, O. Levy, *Nature Materials* 12 (2013) 191.
- [2] C. Kuehmann, G. Olson, *Materials Science and Engineering* 25 (2009) 472.
- [3] T. Bligaard, G. Jóhannesson, A. Ruban, H. Skriver, K. Jacobsen, J. Nørskov, *Appl. Phys. Lett.* 83 (2003) 4527.
- [4] J. Greeley, T. Jaramillo, J. Bonde, I. Chorkendorff, J. Nørskov, *Nature Materials* 5 (2006) 909.
- [5] K. Lejaeghere, S. Cottenier, V. Van Speybroeck, *Phys. Rev. Lett.* 111 (2013) 075501.
- [6] I. Toda-Caraballo, E. Galindo-Nava, P. Rivera-Díaz-del Castillo, *Journal of Alloys and Compounds* 566 (2013) 217.
- [7] D. Backman, D. Wei, D. Whitis, M. Buczek, P. Finnigan, D. Gao, *Journal of Materials* (2006) 3641.
- [8] M. Joo, J. Ryu, H. Bhadeshia, *Mater. Manuf. Process.* 24 (2009) 5358.
- [9] W. Xu, P. Rivera Diaz del Castillo, S. van der Zwaag, *Computational Materials Science* 45 (2009) 467.
- [10] R. Reed, T. Tao, N. Warnken, *Acta Materialia* 57 (2009) 5898.
- [11] F. Tancret, *Modelling Simul. Mater. Sci. Eng.* 21 (2013) 045013.
- [12] B. Conduit, N. Jones, H. Stone, G. Conduit, *Materials and Design* 131 (2017) 358.

- [13] W. Chang, Molybdenum-base alloy, Patent 3275434, 1966.
- [14] ATI Metals, Technologically advanced forgings, 2013.
- [15] J. Shields, Applications of Molybdenum Metal and its Alloys, International Molybdenum Association, 2013.
- [16] National Transport Laboratory, Estimating transport costs, 2013.
- [17] J. Walker, B. Dixon, Machining Fundamentals, 9th Edition, Goodheart-Wilcos Co. Ltd., 2013.
- [18] American Elements, Element catalogue, 2013. URL: <https://www.americanelements.com>.
- [19] W. Jeremenko, T. Velikanova, S. Schabanova, L. Artjuch, Colloq. Int. C.N.R.S. 205 (1971) 277–292.
- [20] P. Gustafson, Z. Metallkd. 79 (1988) 397–402.
- [21] E. Rudy, C. Brukl, S. Windisch, Trans. Metall. Soc. AIME 239 (1967) 1796–1808.
- [22] D. Bandyopadhyay, B. Haldar, R. Sharma, N. Chakraborti, J. Phase Equilib. 20 (1999) 332–336.
- [23] H. Holleck, Kernforschungszentrum Karlsruhe (1981).
- [24] J. Andersson, T. Helander, L. Höglund, P. Shi, B. Sundman, Calphad 26 (2002) 273–312.
- [25] T.-C. S. AB, SGTE Solutions Database, Technical Report, Thermo-Calc Software AB, 2016.
- [26] R. Barr, M. Semchyshen, Stress Strain Curves for Wrought Molybdenum and Three Molybdenum-Base Alloys, Technical Report, Climax Molybdenum Co., 1959.
- [27] M. Semchyshen, R. Barr, Arc Cast Molybdenum and Its Alloys, Technical Report, Climax Molybdenum Co. Unclassified AD 426264, Defense Documentation Center for Scientific and Technical Information Virginia, 1955.
- [28] F. Schmidt, H. Ogden, Molybdenum Metal, Unclassified US AD 426264, Climax Molybdenum Co, 1960.
- [29] A. Ingram, M. Mallett, B. Koehl, E. Bartlett, H. Ogden, Notch Sensitivity of Refractory Metals, Technical Report, Battelle Memorial Institute, 1960.
- [30] G. McArdle, R. Barr, M. Semchyshen, Investigation of Molybdenum and Tungsten-Base Alloy Sheet Materials, Technical Report, Climax Molybdenum Co. Contract NOW 61-0581-d, 1963.
- [31] C. Neff, R. Frank, L. Luft, Refractory Metals Structural Development Program, Refractory Alloy and Coating Development, Technical Report, McDonnell Aircraft Corp and General Electric Co. ASD IR 61-392, 1961.
- [32] T. Redden, Molybdenum Alloy Sheet Studies During 1957, Technical Report, General Electric Co., 1959.
- [33] M. Semchyshen, G. D. McArdle, R. Q. Barr, Development of Molybdenum-Base Alloys, Technical Report, Climax Molybdenum Co., 1959.
- [34] M. Semchyshen, R. Barr, Mechanical Properties of Molybdenum and Molybdenum-Base Alloy Sheet, ASTM, 1959.
- [35] M. Semchyshen, G. McArdle, R. Barr, Development of High Strengths and High Recrystallization Temperatures in Molybdenum-Base Alloys, volume 58-551, Wright Air Development Center, Air Research and Development Command, United States Air Force, 1959.
- [36] M. Semchyshen, R. Barr, Extrusion and Mechanical Properties of Some Molybdenum and Tungsten-Base Alloys, Technical Report, Climax Molybdenum Co ASD TR 61-193, 1961.
- [37] W. Bruckart, S. Whalen, R. Jaffee, B. Gonser, Molybdenum Alloys and Protection by Cladding, Technical Report, Project Rand Report from Battelle Memorial Institute to United States Air Force, 1950.
- [38] A. Feild, R. Ammon, A. Lewis, L. Richardson, Research and Development of Tantalum and Tungsten Base Alloys, Technical Report, Westinghouse Research Laboratories Final Report NO as 58-852-c, 1961.
- [39] S. Foldes, Met. Soc. Conf. 41 (1967) 519–539.
- [40] F. Foyle, High Temperature Materials, Pt II, volume 18, New York, Interscience Publishers, 1963, pp. 109–124.
- [41] L. Glasier, R. Allen, I. Saldinger, Mechanical and Physical Properties of the Refractory Metals Tungsten, Molybdenum, Tantalum above 4000F, Technical Report, Aerojet-General Corp. Rept. M-1826, GWR 356704-411, 1959.
- [42] R. Hall, P. Sikora, Tensile Properties of Molybdenum and Tungsten from 2500 to 3700 F, Technical Report 3-9-59E, Lewis Research Center. NASA Memo 3-9-59E, 1959.
- [43] E. Harmon, R. Morgan, N. Graves, G. Reinhardt, Investigation of the Properties of Tungsten and Its Alloys, Technical Report 60-21, WADD TR 60-144, AF 33(616)-5600, Union Carbide Metals Co. Materials Research Laboratory Rept. 60-21, WADD TR 60-144, AF 33(616)-5600, 1960.
- [44] J. Houck, Physical and Mechanical Properties of Commercial Molybdenum Base Alloys, Technical Report 140, OTS PB 151099, Defense Metals Information Center Rept. 140, OTS PB 151099, 1960.
- [45] B. Lement, I. Perlmutter, Journal of the Less Common Metals 2 (1960) 253–271. URL: <http://www.sciencedirect.com/science/article/B759D-48NC8RB-1JR/2/a013df88fe5b393d1ac7160b08ef09e5>. doi:DOI:10.1016/0022-5088(60)90019-9, conference on Niobium, Tantalum, Molybdenum and Tungsten.
- [46] M. A. Co., Contained in “The Engineering properties of Molybdenum and Molybdenum alloys”, Technical Report, Defense Metals Information Center, 1963.
- [47] F. F. Schmidt, H. R. Ogden, The Engineering Properties of Molybdenum and Molybdenum Alloys, Technical Report AD0426264, Defense Metals Information Centre, 1963.
- [48] M. Semchyshen, R. Barr, Investigation of Hot-Cold Work on the Properties of Molybdenum Alloys, Technical Report WADC TR 56-754, Climax Molybdenum Co, 1957.
- [49] P. Sikora, R. Hall, High Temperature Tensile Properties of Wrought Sintered Tungsten, Technical Report TN D-79, Lewis Research Center, NASA, 1959.
- [50] P. Sikora, High-Temperature Tensile and Stress Rupture Properties of Some Alloys in the Tungsten-Molybdenum System, Technical Report TN D-1087, Lewis Research Center, NASA, 1962.
- [51] W. Wilkinson, Properties of Refractory Metals, Gordon & Breach Science Publishers, 1969.
- [52] D. Kalinovich, I. Kovenskii, M. Smolin, Soviet Powder Metallurgy and Metal Ceramics 4 (1965) 324326.
- [53] J. Imai, O. Taguchi, G. Tiwari, I. Y., Materials Transactions 55 (2014) 1786–1791.
- [54] P. Zhang, S. Li, Z. Zhang, Materials Science and Engineering A 529 (2011) 62.
- [55] T. Heskes, in: Advances in Neural Information Processing Systems 9, MIT press, 1997, pp. 176–182.
- [56] G. Papadopoulos, P. Edwards, A. Murray, IEEE Transactions on Neural Networks 12 (2001) 1278.
- [57] L. Wasserman, All of Statistics: A Concise Course in Statistical Inference, Springer, 2004.
- [58] G. Jóhannesson, T. Bligaard, A. Ruban, H. Skriver, K. Jacobsen, J. Nørskov, Phys. Rev. Lett. 88 (2002) 255506.
- [59] D. Stucke, V. Crespi, Nano Letters 3 (2003) 1183.
- [60] L. Ingber, B. Rosen, Mathl. Comput. Modelling 16 (1992) 87.
- [61] S. Mahfoud, D. Goldberg, Parallel Computing 21 (1995) 1.
- [62] M. Ashby, Materials Selection in Mechanical Design, Burlington, Massachusetts: Butterworth-Heinemann, 1999.
- [63] E. Rudy, Ti-Mo System, Compendium Phase Diagram Data, Ternary Phase Equilibria TM-B-C-Si, AFML-Tr-65-, Technical Report, Air Force Materials Laboratory, 1969.
- [64] B. Conduit, G. Conduit, H. Stone, M. Hardy, Molybdenum-niobium alloys for high temperature applications, Patent GB1307535.3, 2013.
- [65] B. Conduit, G. Conduit, H. Stone, M. Hardy, Development of a new nickel based superalloy for a combustor liner and other high temperature applications, Patent GB1408536, 2014.
- [66] B. Conduit, G. Conduit, H. Stone, M. Hardy, A nickel alloy, Patent EP14157622, 2014.